

The Robert Simpson Company, Limited

Men's Cotton Night-robes 75c

200 White Twill Nightrobes, of good serviceable material; have collar attached and a pocket, full-sized body. Sizes 14 to 18. Regularly \$1.00. Tuesday 75c

1000 "Pen-Angle" Brand Balbriggan Shirts and Drawers, made from double-thread Egyptian yarns, in the natural shade, all sizes, 34 to 44. Per garment 44c

"Pen-Angle" Brand Combinations \$1.00

Made from fine quality balbriggan Egyptian yarns, elastic rib style, also white mesh porous knit; all these are made with the new closed crotch; all sizes in each line, 34 to 44. Tuesday, a suit 1.00

(Main Floor)



"Victor" Boots for Men

Made for the man who will have nothing but the best; all the new styles, in all leathers, are here 6.00, 5.00, 4.50, 4.00

WOMEN'S BUTTON OXFORDS

In all leathers, with three, four, five, six or seven buttons, high or low heels. At 4.50, 3.50 and 2.49

WOMEN'S PATENT PUMPS, \$1.99.

Made on the new short-vamp last, with medium-weight soles and either high or low heels, silk-tailored bow on vamps; sizes 2½ to 7 1.99

MISSSES' "CLASSIC" BOOTS.

Dainty footwear, in patent colt, tan Russia calf, gunmetal and fine vici kid leathers, button or laced Blucher styles; sizes 11 to 2. Tuesday 2.45

(Second Floor)

Boys' Two-Piece Suits

We have purchased a number of strong, serviceable Two-Piece Suits, of splendid-wearing tweeds, cut in double-breast sack and single-breast Norfolk styles, with full bloomer pants; broken ranges from manufacturer's stock; gray and brown colors; sizes 24 to 34. Special, Tuesday 3.49

(Main Floor)

The Horse Show Week "Durward" Spring Overcoats

The store offers a display that will make "off hours" of Horse Show visitors pass rapidly and pleasantly. From every source we have collected magnificent stocks in which authoritative styles and exquisite materials are shown, all marked at very close prices for the great spring shopping week, the week of the Horse Show.



Books for Children

Attractive Picture Books, with colored illustrations. Regularly 15c, 20c and 25c. Tuesday 10c

(Main Floor)

Traveling Goods

Clearing Out Japanese Matting Suit Cases

45 only Matting Suit Cases, leather bound, leather corners, good lock, straps on sides, strong handle, neatly lined with linen; sizes 22-inch, 24-inch, 26-inch. Regular prices up to \$3.50. To clear Tuesday... 1.98

Special Quotations by Our Department of Electric Fixtures

Domes, Semi-Indirect and General Electric Fixtures will be placed on sale in this department during the coming week at prices that are so far below actual value as to command attention. In addition to the lines specified below, we have many others selected and marked at equally low rates. All these goods are of the highest grade.

Massive "Baronial" Dining Hall Dome, 30 inches diameter, frame of real hand-hammered brass, suspended by 4 heavy cast chains, 6 lamps; \$80.00 value 52.90

Handsome Dining-Room Dome, in "Adams" design, very heavy cast brass, finely carved and chased, 6-light cluster; \$125.00 value 62.00

Beautiful Semi-Direct Fixtures, inverted dome, 22 inches across, of opal glass, metal jointed, 3-light cluster. Regular value \$40.00; for 31.50

Hand-hammered Brass Fixture, antique finish, with 4 lanterns, for library or den. Regular value \$45.00; now... \$32.50

Useful Den Fixture, square mission design, 4 lanterns. Regularly \$14.50; now 10.49

4-light Shower Pan Fixture. Regularly \$9.00; now 6.75

3-light Parlor Fixture, heavy cast enrichments on centre bowl, frosted ball lamps or shades. Regularly \$19.00; now 13.69

4-light Shower Fixture, for dining-room, pan and long rod drops. Regularly \$17.00; now 12.89

Hall Lantern, of richly colored leaded glass, hexagon shape, with long chain drop, complete. Regular value \$10.50; now 7.89

Hall Drop, brush brass chain with large ball shade, complete. Regularly \$2.50; now 1.89

50 2-light Electroliners. Regularly \$3.50; now 2.69

3-light Ceiling Fixture, pan close to ceiling and three chain drops. Regularly \$4.50; now 3.49

Most of these lines are held in very limited quantities. An early selection is suggested, as we cannot undertake to duplicate our stock.

—Fifth Floor.

\$3.00 Tapestry Covers \$2.48

Tapestry Table Covers, in new handsome designs, heavy knotted fringe, size 2x2 yards. Regularly \$3.00. Special Tuesday 2.48

Heavy Bleached Twilled English Sheets, size 70 x 90. Splendid value, Tuesday, pair 1.75

Crash Roller Towelling, an extra good quality, all pure linen, with fancy border, width 18 inches. Regularly 20c. Clearing Tuesday, per yard 17c

New Oxford Shirting, full range of pretty stripes and broken checks for serviceable shirts, boys' blouses, etc. Tuesday, per yard 20c

(Second Floor)

A Three-Day Sale of Gloves

A special purchase of Women's Kid Gloves, from one of the largest glove manufacturers of Grenoble, France. The lot consists of the following:

Wrist Length Glace Kid Gloves, two dome fasteners, three cord points; black and tan only; all sizes 55c

Wrist Length Glace Kid Gloves, two dome fasteners, Paris points; black, white and tan; also colors; all sizes 69c

Long Glace Kid Gloves, dome fasteners, overseams, perfect fitting; black and white; 8 and 10-button length, 1.09; 12 and 16-button length 1.59

Dining Room Furniture Specially Low Priced

Dining Chairs, solidly built of quartered oak, in rich brown fumed finish. Sets of 5 side chairs and 1 arm chair. Tuesday 17.40

Dining Chairs, in genuine golden finished quartered oak, with genuine leather seats. Sets of 5 side chairs and 1 arm chair. Tuesday 16.90

Dining Chairs, made comfortable and durable of quarter-cut oak, finished fumed or early English, with upholstered leather seats. Sets of 5 side chairs and 1 arm chair. Tuesday 15.90

Dining Tables, built of selected quarter-cut oak, in fumed finish, pedestal design, with round top, extending to six feet. Tuesday 19.75

Dining Tables, in genuine quartered oak, and can be had in either rich golden polished or fumed finishes. Round top 48 inches in diameter, extending to 8 feet. Tuesday 27.50

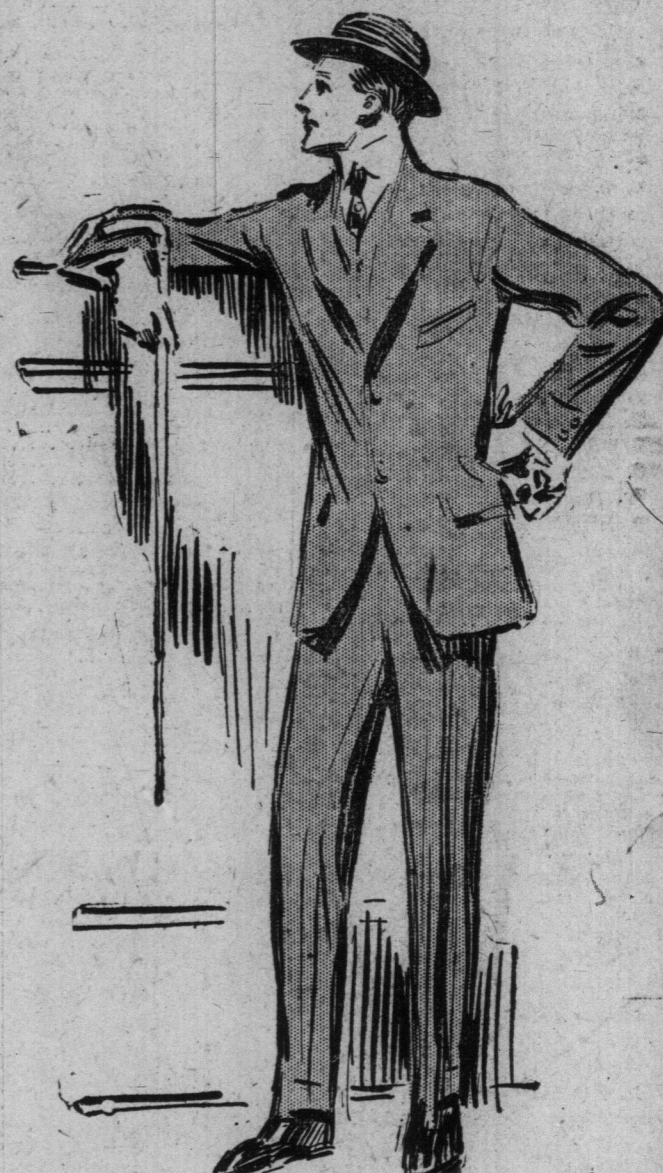
Dining Tables, of massive design, heavily built throughout of selected quarter-cut oak, finished in polished golden color. Tuesday 41.75

Buffets, made of thoroughly seasoned hardwood, in quartered oak finish, of good size, with good cupboard and drawer space. Tuesday 23.50

Buffets, built of selected quarter-cut oak, two patterns, both conveniently arranged with cupboards, cutlery and linen drawers, and heavy beveled plate mirror. Tuesday 25.00

Buffets, an exceptionally good design, built of selected materials, finished in rich brown fumed; large cupboard, long, deep linen drawer, and short cutlery drawer. Tuesday 41.75

—Fifth Floor.



Men's and Youths' Tweed Hats

New American college shape, medium crown and droop brim, fine quality tweeds, in brown, tan, olive, and gray mixtures. Tuesday, special 1.50

Young Men's Stiff Hats, in very dressy styles of medium and low crowns, with flat set or curling brims; extra fine quality felt. Tuesday 2.00

Men's and Boys' Caps, in tweeds, worsteds, serges, etc., fine all-wool qualities, in wide choice of colors and patterns; 75c values. Tuesday... 50c

(Main Floor)

The Grocery List

One car Standard Granulated Sugar, 20 lbs. 1.00

Choice Picnic Hams, 6 to 8 lbs. each. Per lb. .15

Post Toasties. Three packages25

Ogilvie's Royal Household Flour. Quarter bag35

Choice Fresh Pineapples, good size. Each, .13

Per dozen 1.50

Pure Kettle-Rendered Lard. 3-lb. pail54

Canned Fruit—Raspberries, Strawberries, Cherries and Peaches. Per tin18

Finest Creamery Butter. Per lb.34

500 Pails Pure White Clover Honey, while they last. 5-lb. pail65

Peerless Brand Pork and Beans. Three tins .25

Choice Pink Salmon. Per tin10

Fancy Japan Rice. 3½ lbs.25

500 lbs. Fresh Ginger Snaps. 3 lbs.25

Canned Corn. Three tins25

Canned Beans, Golden Wax. Three tins18

Finest Mild Cheese. Per lb.15

Canned Beets, Rosebud Brand. Large tin15

Pure Gold Quick Tapioca, Chocolate and Custard Powder. Three packages .25

(Basement)

The Robert Simpson Company, Limited