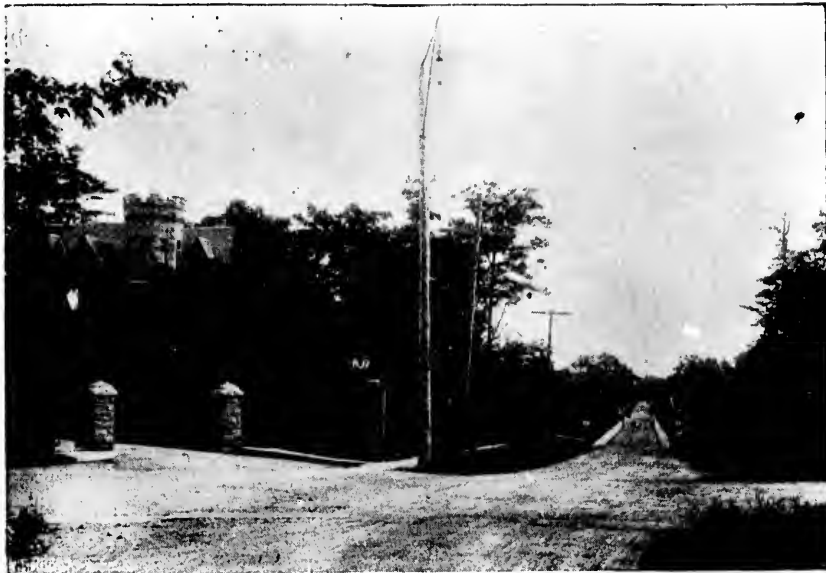


these there are numerous police stations scattered throughout the city and an excellent patrol service. The Toronto police force have a continental reputation for appearance and efficiency. They have been organized on a military basis, with regular drill and instructions in the use of fire-arms. Physically they are typical specimens of stalwart and hardy manhood.

### STREETS AND DRIVES.

All the streets and avenues are broad and most of them well paved and all remarkably clean. The principal kinds of pavements are



SECOND BRIDGE, ROSEDALE.

asphalt, cedar block and vitrified brick. The rest of the streets are macadamized.

The area within the city limits is about 10,391 acres. In this area there is a population of about 200,000. There are about 250 miles of streets of which over one half are paved. There are 83 miles of lanes and 430 miles of sidewalks. There are 78½ miles of steam railway track and 68½ miles of street railway track. Of overhead electric wires there are 4,300 miles, together with an additional 30 miles of underground electric conduit. The city is situated on a plateau gently ascending north for a distance of three miles where an altitude of 220 feet above