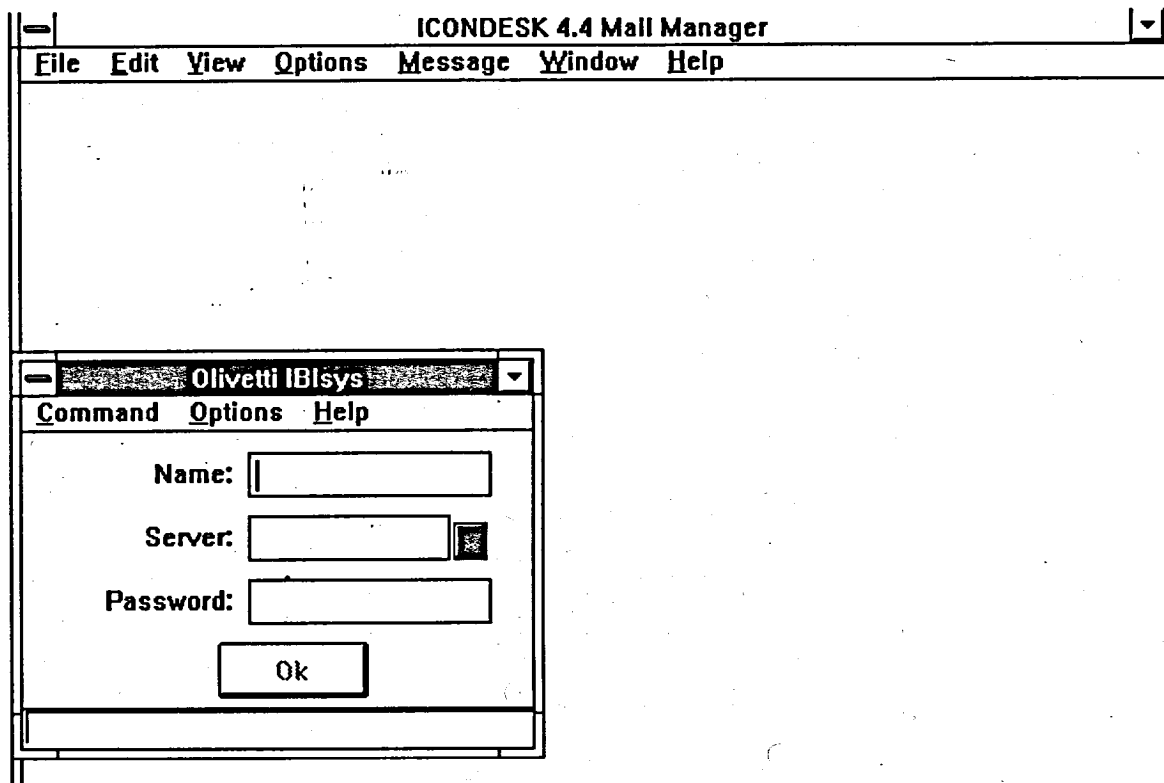


IBISYS LOGIN AND LOGOUT PROCEDURES

In order to use ICONDESK (or other IBIsys programs) you must first login to your IBIsys account. This is achieved by using the IBIsys Login program.



When you begin a SIGNET session, Microsoft Windows will automatically start the IBIsys Login program which will, in turn, display the Olivetti IBIsys dialog box (as shown). At this point, you may either proceed to login, close the IBIsys Login window, or minimize it for later use.

The logout procedure must be performed before you exit Windows. Otherwise the system will display a message stating to "Please Logout First".