

**S**HOWING four "Victor" Suspension Insulator Units under severe rain test at 205,000 volts; also a 65-ft. steel tower equipped for 100,000-volt operation. This is part of an experimental tower line at Victor, 800-ft. span, running up to 350,000 volts.

*"Victor" insulators are good and they are safe.*

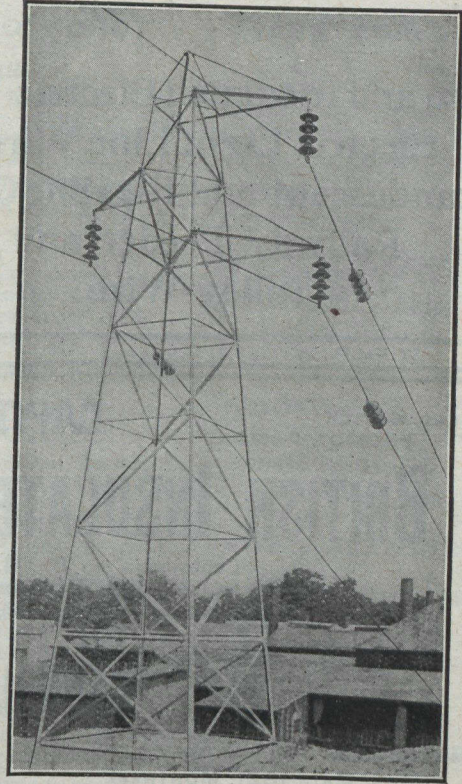
## The Locke Insulator Mfg. Co.

Victor, N.Y., U.S.A.

Montreal Office:

The Engineering Equipment  
& Supply Co.,

13 St. John Street



### TELEPHONE MEN:—

We know of no better way of emphasizing the long service — qualities in our apparatus than referring prospective purchasers to Kellogg telephones and switchboards giving splendid service two, five, eight and more years after they have been installed.

We are proud of the fact that our customers are our best advertisement.

While all of our readers cannot make actual inspection of operating Kellogg exchanges, we can show on these pages why our telephones have superior service records, by illustrating how they are built from the beginning where the rough lumber is unloaded at our complete woodworking plant until the telephones are connected to the line in the working exchange system.

We do not buy the boxes or cabinets or receivers or generators; we make them all — from the start to finish, and that we make them right is evidenced by the way Kellogg apparatus serves — in the severe daily-monthly — yearly operation in every class and size of exchange. In succeeding issues we will show views of our telephone and switchboard woodworking processes — the careful steps that combine to make the apparatus that the name Kellogg stamp as the independent standard throughout the world.

## KELLOGG SWITCHBOARD & SUPPLY COMPANY CHICAGO

Canadian Office: Winnipeg, Canada.

Manufacturers of Standard Telephones and Switchboards.