

THE CANADIAN ARCHITECT AND BUILDER

Vol. XX.—No. 6.

Toronto, Montreal—JUNE, 1907—Winnipeg, Vancouver

PRICE 25 CENTS
\$1.00 PER YEAR.

TILES FAIENCE MOSAICS
GRAVEN, DUNNILL & CO., LIMITED
JACKFIELD, E. B. O., SHEPHERD.
ENAMELS WALLS LUSTRES

SKYLIGHTS
FIREPROOF, JUST, AIR and WATERPROOF
Automatic Heat Closing Fireproof Windows and Doors, Fire Door Hardware, Adjustable Fire Door Hangers, Metal and Cement, Metal and Glass Fireproof Partitions, Cornices, Corrugated Iron, Metal Collings, etc., Asbestos, Slate, Felt and Gravel Roofing.
A. B. ORMSBY, LIMITED
Factories: Queen & George Sts., TORONTO. 677-9-31 Notre Dame Ave. W., WINNIPEG
Montreal Agents: Stinson-Reeb Builders' Supply Co., Limited, 188 William Street.

OTIS-FENSOM ELEVATOR CO., Limited

MANUFACTURERS OF "OTIS STANDARD ELEVATORS"

HEAD OFFICE:
CONFEDERATION LIFE BLDG.,
TORONTO.

MONTREAL OFFICE
473 ST. JAMES ST.

WINNIPEG OFFICE
44 CANADA LIFE BUILDING.

"MADE IN CANADA"

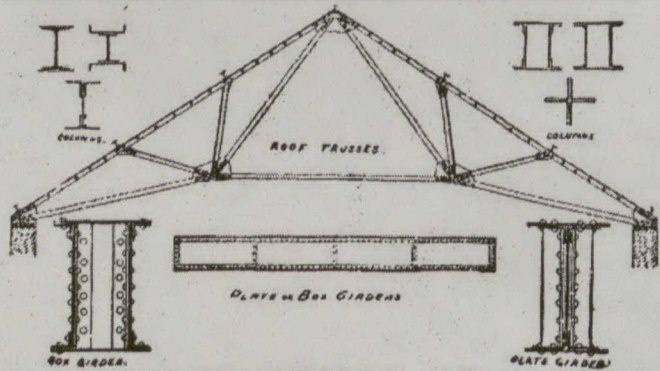
Bent Glass

Made in all Kinds of Glass
on Short Notice.

Large Bent Plate Glass for
Shop Fronts a Specialty.

Toronto Plate
Glass Importing Co.
(HILL & RUTHERFORD)
135-143 Victoria Street

BENDING WORKS:
209-213 Victoria Street
TORONTO



DOMINION BRIDGE CO. (LIMITED)
WE BUILD { Bridges of all designs in both Iron and Steel, Roofs, Telephone Poles, House Girders and all kinds of Structural Iron Work.
OUR STOCK IN HAND COMPRISES { Steel Beams, Angles, Tees, Channels, Plates, Rolled Edged Flats, Bars, Rivets, Rounds, &c. Iron Beams, Bars, Squares, Turnbuckles, Rivets, &c.

Estimates furnished for Structural Iron Work delivered at building or erected
GEORGE E. EVANS, Post Office Address:
Ontario Agency: Room 28, Canada Life Building, Toronto. Telephone Main 4164. DOMINION BRIDGE CO., Ltd., Montreal, P. Works at Lachine Locks, P. Q.

TURNBULL ELEVATORS

SEE AD. PAGE VIII

ELEVATORS

ELEVATORS

For all purposes. Satisfaction guaranteed.
Write for prices and references
THE PARKIN ELEVATOR WORKS
258 Catherine Street North,