



FAC-SIMILE OF
WHITE LABEL ALE

THE DOMINION BREWERY Co. LIMITED BREWERS AND MALTSTERS TORONTO

MANUFACTURERS OF THE

Celebrated **White Label Ale**

ASK FOR IT and see that our Brand is on every cork. Our Ales and Porters have been examined by the best analysts, and they have declared them Pure and Free from any Deleterious Ingredients

WM. ROSS, - - - Manager.

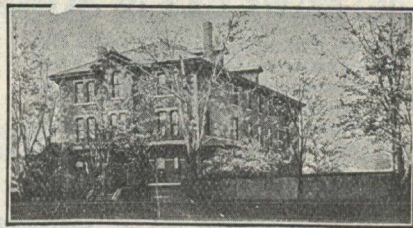
The Brock Company (Limited)

**3
LINES**

SILK AND WOOL Crepe de Chine

to retail at 75c, \$1.00 and \$1.25, in cream, navy, grey and champagne.

Letter Orders Promptly Attended to.



"Glen Mahur"

RESIDENTIAL AND DAY SCHOOL
FOR GIRLS

651 SPADINA AVENUE, TORONTO

Thorough English Course. Individual Attention. Pupils prepared for the Universities and for Examinations in Music and Art. Large staff of Resident and Visiting Teachers.

MISS VEALS,
Lady Principal.

THE WELL

The "Carlsbad" of America is in the Niagara Peninsula, 11 miles from Niagara Falls. The Saline Waters of the

"St. Catharines Well"

are a wonderful remedy for the ills of life—rheumatism, neuralgia, sciatica, and nervous troubles.

Long distance phones in each room. Private baths and parlors. Apply

"THE WELLAND,"
St. Catharines, Ont.

OF HEALTH

HANSON BROS.

Dealers in
HIGH GRADE BONDS
of every description.

Canada Life Building, - - - Montreal.

We own, and have at present for sale, the following securities:—

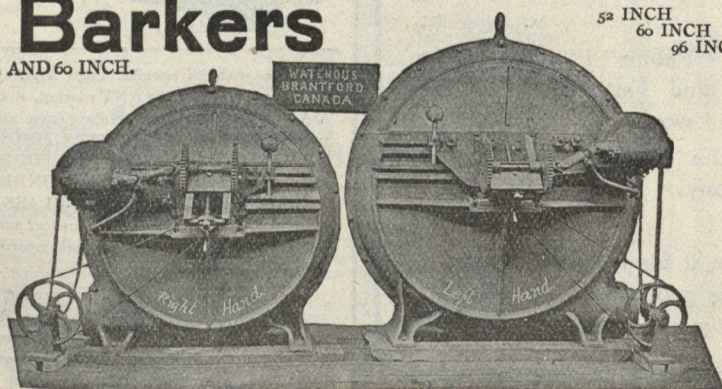
- \$75,000, City of Montreal 4's, maturing 1942.
- £10,000 0. 0. sterling, City of Montreal 3½% Debenture Stock, maturing 1942.
- £5,000 0. 0. sterling, Government Newfoundland 3½% Bonds, maturing 1931.
- £10,000 0. 0. sterling, City of Quebec 3½% Registered Stock, maturing by half-yearly drawings, the last of which is made 1962.
- £1,200 0. 0. Prov. of Quebec 5's, maturing 1904.
- \$25,000 Elgin, Aurora & Southern Traction 5's, maturing 1916.
- \$70,000 Thirty-year Bonds of Peterboro, Ont.
- \$25,000 Town of St. Louis, P.Q. 4's maturing 1940.
- \$25,000 West Kootenay Light & Power 6's, maturing 1907.
- \$15,000 Town of St. Johns, P. Q. 4's, maturing with Sinking Fund within 1951.
- \$14,000 Village of Roberval, P. Q. 4½% Annuities.
- \$25,000 Detroit United Railway 4½'s, maturing 1932.
- \$50,000 Chicoutimi Pulp Co. First Mortgage 5's, maturing 1922.

Prices and full particulars upon application.

Pulp Wood Machinery Barkers

52 AND 60 INCH.

52 INCH
60 INCH
96 INCH



Heavy machines, thoroughly well made, for fast continuous service—made either hand, down or up delivery. **WITH OUR** cutting up rig 2 men handle 100 to 125 cords per day, taking logs from water, delivering cut wood to barkers in any length. Special cross cut machines also supplied for handling shorter or smaller wood.

Save Your Slabs Bark them on our 96-inch Barker—when they make perfect pulpwood. Tons of Link Belting for handling and conveying kept constantly in stock.

WATEROUS,
BRANTFORD, CANADA