

RECURRING GRIPPE.—I. N. Love, M.D., Vice-President American Medical Association, writes:

"The history of epidemics is almost uniform in the direction of their extending over several years. Frequently the disease is endemic, becoming a definite part of every-day life, as witness, diphtheria in many sections of the country. La grippe is no exception. Appearing among us several years ago, it returned the second year in a form more virulent than the first, producing efforts far-reaching and uniformly demoralizing. The possibilities are that the coming winter and spring will develop enormous numbers of these cases; cases affected *de novo* by the germ—if there be any—and cases that have never recovered from previous attacks with re-aroused disturbances due to the sudden and frequent changes of the weather. Feeling the importance of keeping open the excretory system of glands and, at the same time, considering thoughtfully the rheumatic feature that accompanies these cases, no remedy would more promptly suggest itself to my mind than that of Tongaline—a combination which naturally suggests antagonism to a locked-up condition of the glands,

opposition to rheumatism, neuralgia, nervous headache and gout.

"I commend it earnestly and emphatically to the practitioners of the country at large to meet the conditions to which we have referred."

THOMAS'S ELECTRIC OIL.—

Take of—

Gum camphor.....	4 3
Oil gaultheria.....	4 3
Oil origenum.....	4 3
Chloroform	1 3
Tr. opium	1 3
Oil sassafras.....	1 3
Oil hemlock.....	1 3
Oil turpentine	1 3
Balsam fir	1 3
Tinct. guaiacum	1 3
Tinct. catechu.....	1 3
Alcohol	4 pts.
Alkanet	sufficient to color.

Mix.

—*Secret Nostrums and Systems*

[OVER

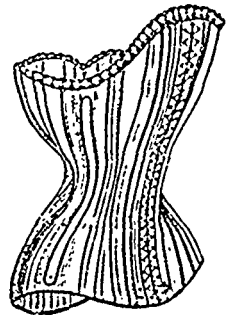
MADAM VERMILYEA'S HEALTH CORSET

Read what a prominent Toronto Physician says:



"I have examined MADAM VERMILYEA'S PATENT SPIRAL STEEL HEALTH CORSET, and can recommend it without hesitation as being the **best Corset I have ever seen**. It is constructed on the hygienic and anatomical principles, and is a great boon to ladies."

PROMPT ATTENTION GIVEN TO ALL ORDERS
WRITE OR CALL



Specially adapted for Stout Ladies.

VERMILYEA CORSET CO.

489 QUEEN STREET WEST

TORONTO, ONT.