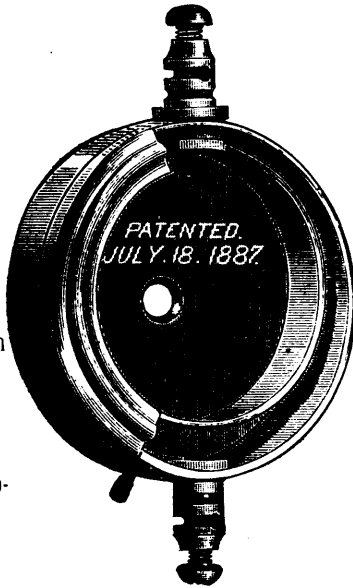


# W. C. HIBBARD, MONTREAL,

MANUFACTURER OF

Campbell  
Water-proof  
Wires.  
  
Annunciator  
and  
Office Wire.  
  
Silk and Cotton  
Covered  
Magnet Wire.  
  
Aerial and Sub-  
marine Cables.



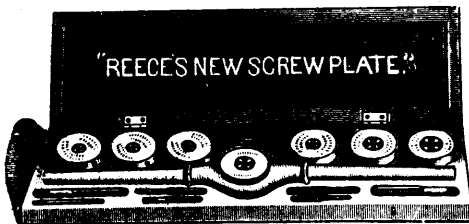
Superior  
Water-proof  
Tape.  
  
Telephones.  
  
Hotel & House  
Annunciators.  
  
Gas Lighting  
Apparatus.  
  
Burglar Alarms.

## AUTOMATIC FIRE ALARM APPARATUS

And all Electrical Appliances and Supplies.

PERFECT THREADS AT ONE CUT.

### REECE'S NEW SCREW PLATES



**CUT SHOWING SIZE C COMPLETE IN BOX.**

Size C cuts  $\frac{1}{2}$ , 5-16,  $\frac{3}{8}$ , 7-16,  $\frac{1}{2}$ ,  $\frac{5}{8}$  and  $\frac{3}{4}$  inch. Price, complete, \$20.

**SIZE A, SAME STYLE.**

Cuts  $\frac{1}{2}$ , 5-16,  $\frac{3}{8}$ , 7-16 and  $\frac{1}{2}$  inch. Price, complete, \$13.

**SIZE B, SAME STYLE.**

Cuts  $\frac{1}{2}$ ,  $\frac{3}{4}$ ,  $\frac{1}{2}$ ,  $\frac{3}{4}$  and 1 inch. Price, complete, \$21.

**SIZE D, SAME STYLE.**

Cuts  $\frac{3}{8}$ , 7-16,  $\frac{1}{2}$ ,  $\frac{5}{8}$ ,  $\frac{3}{4}$ ,  $\frac{1}{2}$ , and 1 inch. Price, complete, \$25.

**SIZE E, SAME STYLE.**

Cuts  $\frac{1}{2}$ , 5-16,  $\frac{3}{8}$ , 7-16,  $\frac{1}{2}$ ,  $\frac{5}{8}$ ,  $\frac{3}{4}$ ,  $\frac{1}{2}$  and 1 inch. Price, complete in box, \$29.

All other Dies at Corresponding Prices.

We furnish Collet and Die same as used in our Reece's New Screw Plate, to fit stocks B, D and large C stock, Little Giant, also B and C Wiley & Russell Lightning Screw Plate.

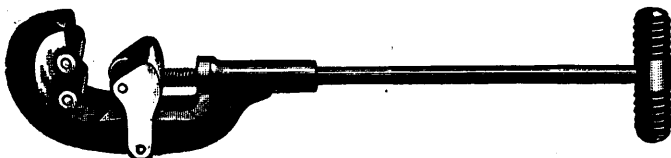
MANUFACTURED BY

**BUTTERFIELD & CO.**

Derby Line, Vermont, and Rock Island, Quebec.

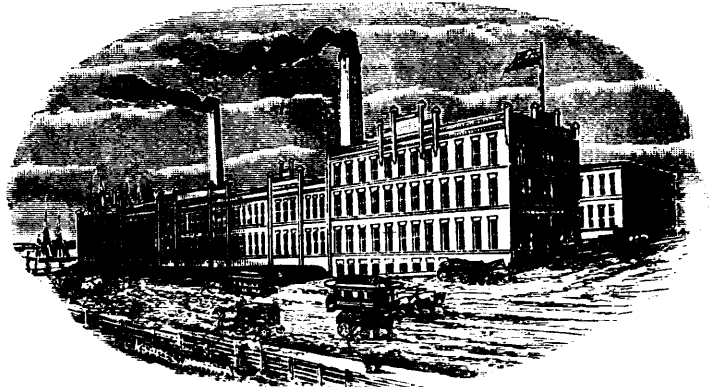
THE BEST PLATE IN THE WORLD,

PATENTED IN UNITED STATES, JUNE 23, 1886.



(3)

# DOMINION TIN AND STAMPING WORKS



Plain, Stamped and Japanned Tinware,  
Copper Goods,  
Star Patent Stove Pipe Thimbles,  
Stove Boards, Wire Goods,  
Machine Oilers, Coal Hods,  
Fire Shovels, House-furnishing Goods.

SPECIALTIES—Spice Tins, Mustard Tins, Baking Powder Tins, Blacking Boxes, Paint  
Irons, Lye Cans, Grocers' Canisters, Square and Round Oil Cans,  
Oil Tanks, Patent Butter Tubs (Tin Lined).

## KEMP MANUFACTURING CO'Y

Cor. Gerrard & River Sts., Toronto.

# Balcony Fire Escapes

(BATTEN'S PATENT)

### ADVANTAGES :

The advantages of the BATTEN FIRE  
ESCAPE over all others are :

That the balconies are made of the best wrought iron, of any ornamental design or pattern, and securely bolted through the walls. Can be made any length or width. The brackets and flooring are capable of bearing any number of persons standing on them. The ladders, with wide steps and of easy grade, can remain down permanently, or folded up, as desired, showing the ornamental balcony only in sight, which does not mar the architectural beauty of the building, and can be instantly released when desired. No ice or snow will remain on them, neither will the working parts rust; and they will work admirably in any weather.

A Stand Pipe is also connected for high buildings, with valves at each door and on the roof.

Our Escapes have been fully tested at fires and proved themselves invaluable for saving life and property. Iron guards on windows of Asylums and Reform Schools can be so adjusted as to be instantly released in the case of fire by the unfolding of ladder or sounding of a gong.

Sole Manufacturers for Canada,

## NIGHOLLS & HOWLAND,

The Permanent Exhibition of Manufactures  
and Commercial Exchange,

63 to 69 Front St. West, TORONTO.