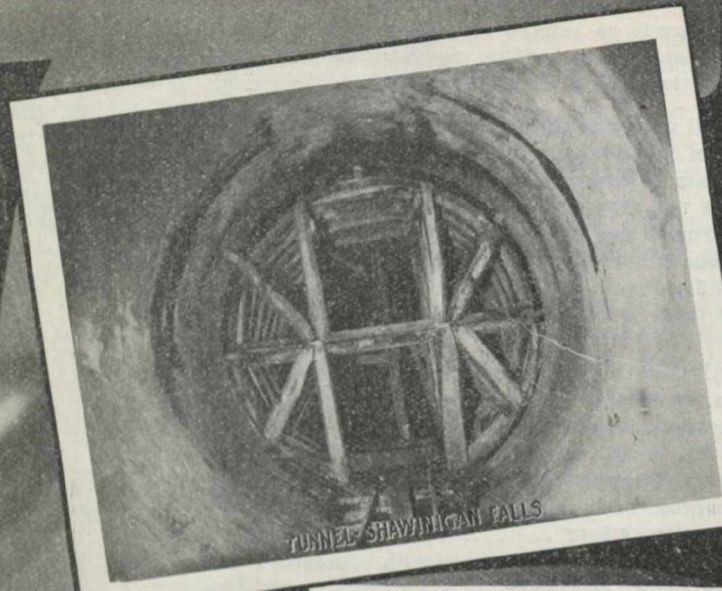


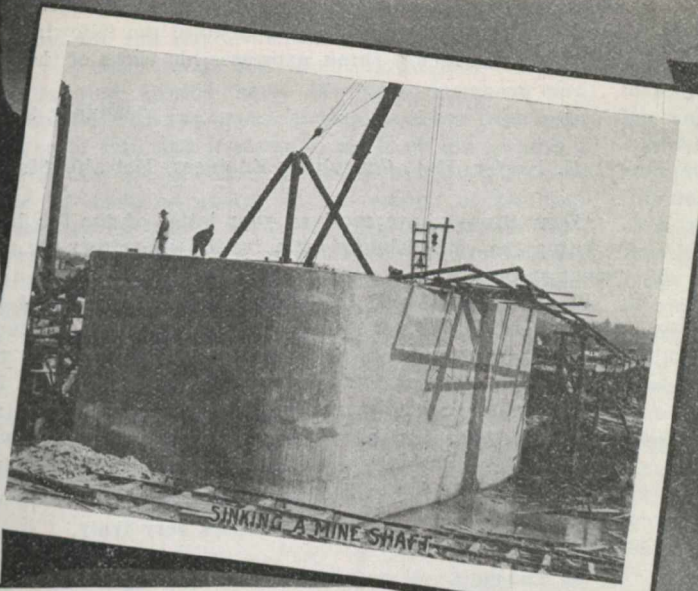
FOUNDATIONS - WINDSOR STATION EXTENSION MONTREAL



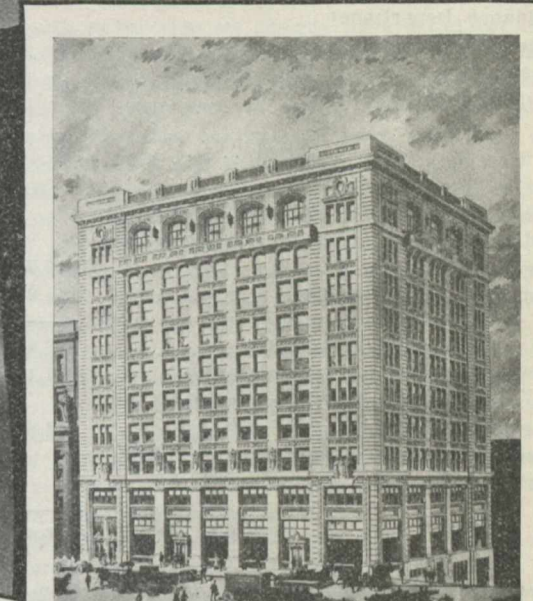
TUNNEL SHAWINIGAN FALLS



RIVER PIERS - CANADIAN L & P. CO.



SINKING A MINE SHAFT



FOUNDATIONS - DOMINION EXPRESS BLDG MONTREAL



SHORING - 12 STORY BUILDING



RIVER PNEUMATIC CAISSON

THE FOUNDATION COMPANY

LIMITED

Bank of Ottawa Building

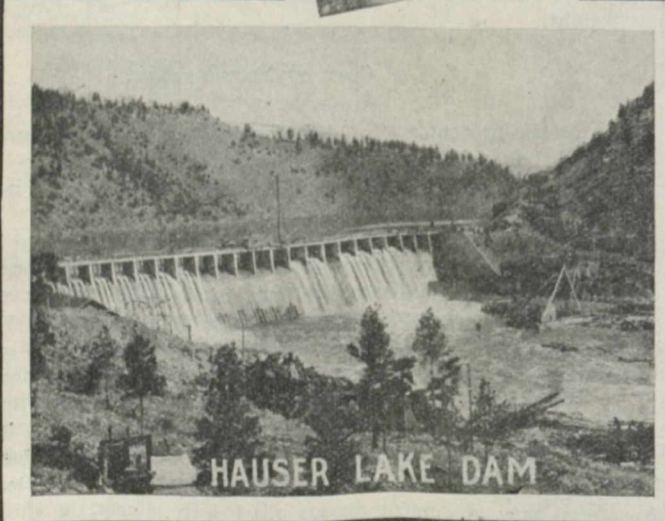
MONTREAL, Canada

OUR SPECIALTY:

All Kinds of Difficult Foundation Work

OUR SCOPE:

BRIDGE PIERS—DOCKS—DAMS—SEA-WALLS—MINING SHAFTS.
WHARVES—TUNNELS—WATER POWER CONSTRUCTION.
HEAVY BUILDING FOUNDATIONS.



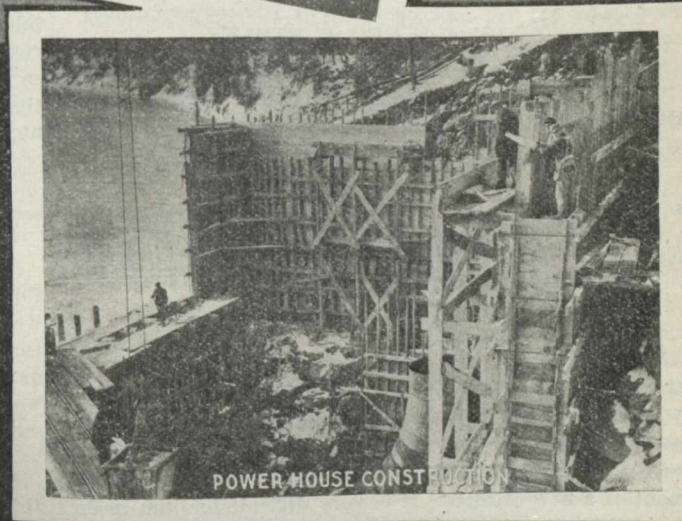
HAUSER LAKE DAM



OPEN COFFERDAMS



FOUNDATIONS - C.P.R. ST. LAWRENCE RIVER BRIDGE



POWER HOUSE CONSTRUCTION