

## Reliable help for the farmer

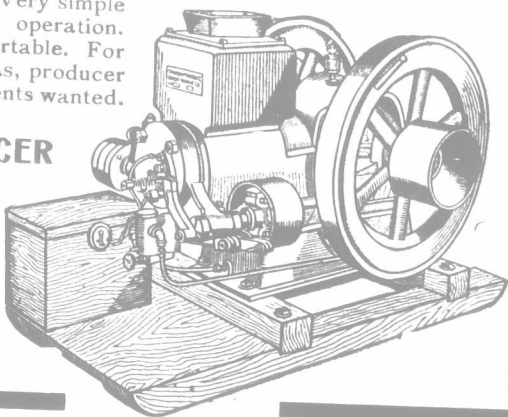
Farm labor is scarce. Wages are high. All the more need for a **BARRIE ENGINE**. Soon pays for itself in time and labor saved. Grinds grain, shells seed corn, pumps water, cuts straw, threshes beans, saws wood, drives churns, separators and washing machines. Does many other things, too.

## BARRIE ENGINES WORK LONG

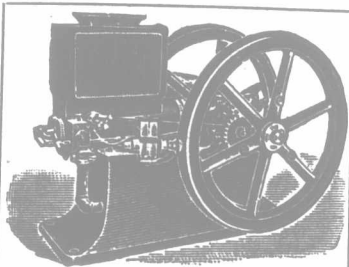
hours without getting tired. Very simple in construction. Reliable in operation. 3 to 100 h.p. Stationary or portable. For gasoline, distillate, natural gas, producer gas. Write for catalogue. Agents wanted.

**The CANADA PRODUCER & GAS ENGINE CO., Ltd.**  
Barrle, Ontario, Canada  
Distributors:

James Rae, Medicine Hat; Canada Machinery Agency, Montreal; Mc Cusker Imp. Co., Regina; The Tudhope-Anderson Co., Ltd., Winnipeg; Calgary, Edmonton, Lethbridge, Saskatoon and Regina.



## A NEW NAME for the BEST Farm Engine



Made in air-cooled or water-cooled styles. Sizes 1½ to 20 h.p. Send for catalogue, prices and buying terms for farmers.

We have changed the name of our famous "CANADIAN" air-cooled and water-cooled engines to a name that also signifies superiority.

Hereafter, these engines will be known as the Monarch.

It is a Monarch among farm engines. No engine runs better, is more compact, easier started, surer and steadier than this. Always remember the "MONARCH".

Every part is true to 1/500 in. or less. Experts work on every part. Material is the best money can buy. Bearings are

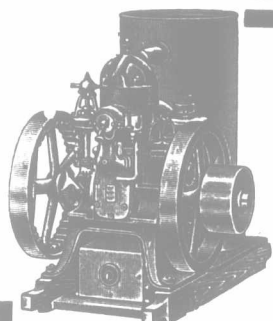
big and wide. The design is compact and every part is reachable. The "MONARCH" is reliable, simple, durable, powerful and dependable. Easy buying terms. Write us for catalogue. Our Company has a new name too.

## THE CANADIAN ENGINES, LIMITED

Formerly Canadian-American Gas & Gasoline Engine Co., Limited.

DUNNVILLE, ONTARIO

Frost & Wood, Ltd., Smith's Falls, Sole Selling Agents for East'n Ont., Que. and Mar. Prov.



## This Engine Runs on Coal Oil

Every farmer can afford an Ellis Coal Oil Engine. They give as much power from coal oil than other engines do from gasoline. They are safe, as well as cheap; no danger of explosion or fire.

The strongest and simplest farm engine made; only three moving parts: nothing to get out of repair. Anyone can run it without experience. Thousands of satisfied customers use these engines to grind feed, fill silos, saw wood, pump, thresh, run cream separators, and do dozens of other jobs. Cheaper than horses or hired men. Fill up the tanks and start it running, and no further attention is necessary; it will run till you stop it.

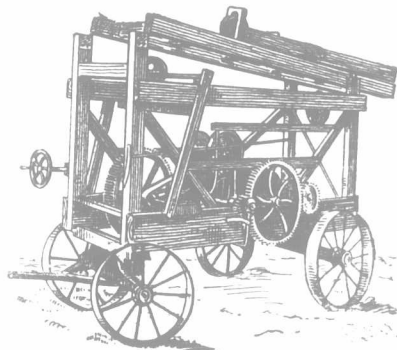
**FREE TRIAL FOR 30 DAYS.** You don't have to take our word for it. We'll send an engine anywhere in Canada on Thirty Days' Free Trial. We furnish full instructions for testing on your work. If it does not suit you send it back at our expense. We pay freight and duty to get it to you and we'll pay to get it back if you don't want it.

**Absolutely guaranteed for 10 years.** Write for free catalog and opinions of satisfied users. Special offer in new territory.

3 to 15 horse-power  
We Pay Duty and Freight

**Ellis Engine Co., 94 Mullett Street  
DETROIT MICH.**

## Dick's Standard Well Drilling Machine



THE Noiseless Well Drilling Machine is the term usually applied to The Standard when compared to other makes, with their incessant rattle and clang. They are compactly constructed and their mechanism is built of iron and steel—not wood.

"Boys"—This is a money maker. Drop a card to-day for full particulars.

The Dick Well Drilling Machine Co.  
BOLTON, ONT., CANADA  
Quebec Agents: Bournival & Co., 333 Notre Dame St. East, Montreal

## The Range With a Reputation

### The Economy of A New Range

It is a mistaken idea of economy to try to get along—to attempt to get results with an old worn out range or cook stove merely to save the price of a new one. You can probably stick a knife blade anywhere in the seams of your worn out range where the bolts are loose and the stove putty has crumbled away and you're burning twice the fuel necessary. You can save the price of a Great Majestic in the saving of fuel alone—and that would be good management and real economy. Don't trust wholly to a printed description in buying a range, because a very glowing description can be given of a very ordinary range. If you are considering a new range, it will pay you, before investing your money in any range to go to some dealer who handles them and carefully compare, point for point, with any other—the

## Great Majestic Malleable and Charcoal Iron Range

A Perfect Baker—Fuel Saver—Outwears Three Ordinary Ranges

ONLY range made of malleable iron and charcoal iron. Charcoal iron won't rust like steel—malleable iron can't break. Put together with rivets—joints and seams absolutely air-tight always. Oven lined with guaranteed pure asbestos board, covered with an iron grate—you can see it—insuring a dependable baking heat with half the fuel required in ordinary ranges.

All Copper Movable Reservoir—Other Exclusive Features

Reservoir is in direct contact with fire, heats through pocket stamped from one piece of copper—patented feature only in Majestic. Oven Thermometer—open end ash pan—ventilated ash pit—ash cup. Sold by dealers in nearly every county in 40 states. Write for our booklet, "Range Comparison."

**Majestic Mfg. Co.,**  
Dept. 37, St. Louis, Mo.

It Should Be In Your Kitchen



Don't let your barn decay

for lack of paint. Give your barn the lasting protection of Sherwin-Williams Barn Red—economical, easy spreading and durable—a rich, handsome red, suitable for all buildings built of rough lumber. Put up in full Imperial Measure Cans.

## SHERWIN-WILLIAMS PAINTS & VARNISHES

THE SHERWIN-WILLIAMS Co. of Canada, Limited, Montreal, Toronto, Winnipeg, Vancouver

A CANADIAN SCHOOL FOR BOYS

## RIDLEY COLLEGE

St. Catharines, Ontario

Three separate residences; new, specially built and equipped. 1. Lower School for Boys under fourteen. 2. Dean's House, for Boys of fourteen and fifteen. 3. Upper School, for advanced Pupils. Gymnasium and Swimming Baths just erected. Fine Hockey Rink. Athletic Fields and Playgrounds unsurpassed. Eighty acres. Mild climate. University Scholarship won in 1909 and 1910. Boys prepared for Agricultural College.

REV. J. O. MILLER, M.A., D.C.L.,

PRINCIPAL

## RAILS NEW AND SECOND-HAND

Cut to Specification for any Purpose

JOHN J. GARTSHORE, 58 WEST FRONT STREET, TORONTO

## INVENTIONS

Thoroughly protected in all countries. EGERTON R. CASE, Registered Patent Attorney, DEPT. F, TEMPLE BUILDING, TORONTO. Booklet on Patents and Drawing Sheet on request.

Poet—"I called to see if you had an opening for me."

Editor—"Yes, there's one right behind you, shut it as you go out, please."