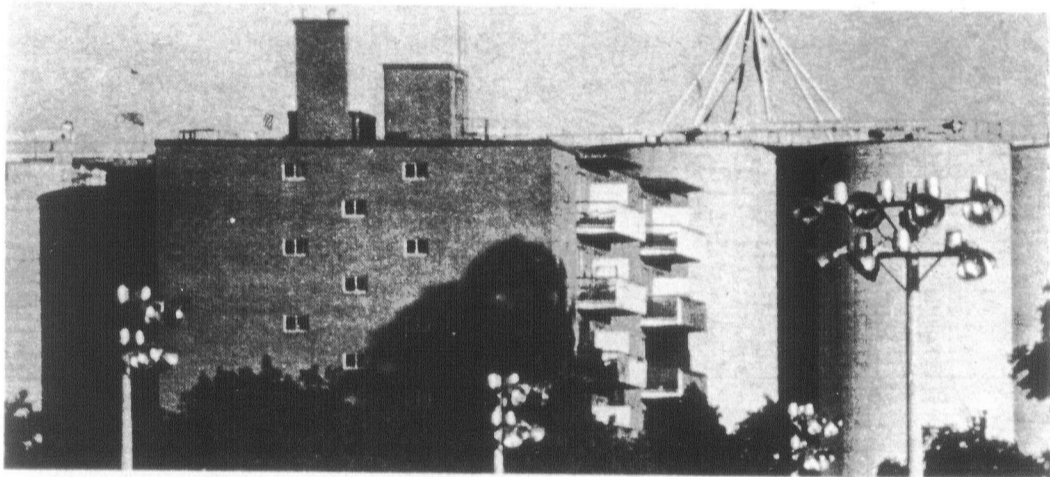
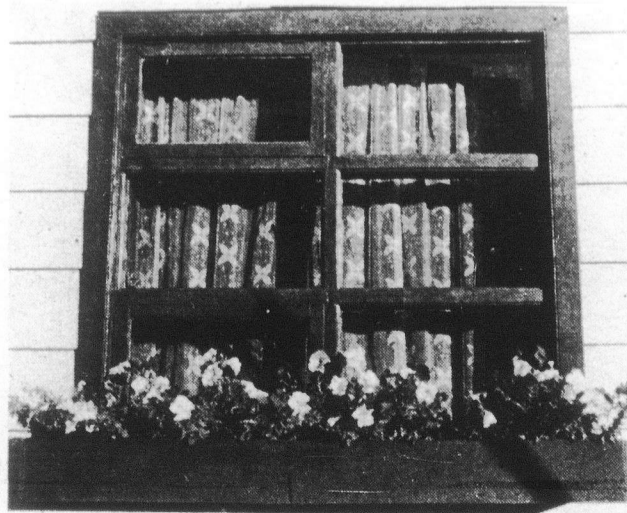


There, somewhere, is downtown Streetsville



Approaching from the west, a traveller can spot a single church spire rising out of the wooded surroundings. It's Streetsville, now just a part of the huge metropolis of Mississauga, but still distinctive on Queen and Main streets: Queen street (above) shadowed in the evening light; the contrasting scenes of ball park lights, an apartment building and the Reid milling plant; the utilities building on Queen Street; a late summer flower box on Main Street. And, catching it all on canvas is Vojislav Morosan.



Times photo essay
by Gorm Larsen

