

Abbey's Effer-Salt

A wise person knows when to use Abbey's salt.

Don't you think it time to get a bottle?

25c and 60c.

Sold everywhere.

82

Home Dressmaking

is simplified by using the celebrated



Hall-Borchert Adjustable Forms

Adjustable to every size from 32 to 44 bust measure and can be raised to suit length of skirt.

Write to-day for our New Catalog. It shows a full line of Dressmakers' Forms.

CLATWORTHY & SON, Ltd.

Display Fixture Manufacturers

161 King St. West, TORONTO



A New Head in 30 Minutes

Exchange that aching, throbbing, suffering, muddled head for a clear, cool, comfortable one by taking a

NA-DRU-CO Headache Wafer

25c. a box at your druggists' or by mail from

NATIONAL DRUG and CHEMICAL CO.

of Canada, Limited, Montreal. 28A

Oxide of Zinc

Vaseline

Quickly Heals Eruptions, Sores and Wounds

12 Vaseline Remedies in Tubes

Capsicum, Borated, Mentholated, White, Carbulated, Camphor, Ice, Camphorated, etc. Each for special purposes. Write for Free Vaseline Book.

Chesebrough Mfg. Co. 1880 Chabot Ave Montreal

"CEETEE" UNDERWEAR

Always feels good

From first to last "Cee-tee" Underclothing delights all folks—perfect fitting, healthy and comfortable.

Look for the "sheep" trademark. Insist on your dealer showing you "Ceetee." In all sizes for men, women and children.

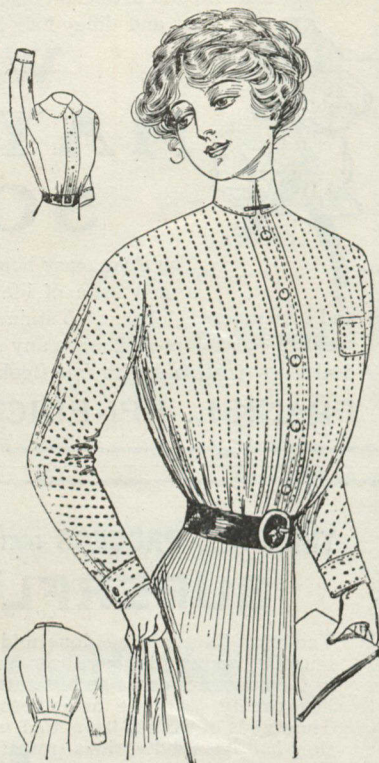
The C. Turnbull Co. of Galt, Ltd.

Manufacturers—Estb. 1859

Galt - Ontario 2604

rials and is also well adapted to a suit for cooler weather made from heavier materials.

The suit consists of the blouse and knickerbockers. The blouse is made simply with fronts and back, and closes



Blouse Pattern No. 7070

with buttons and buttonholes, while the sleeves are laid in tucks at the wrists. The knickerbockers are of the regulation sort, drawn up by means of elastic at the knees.

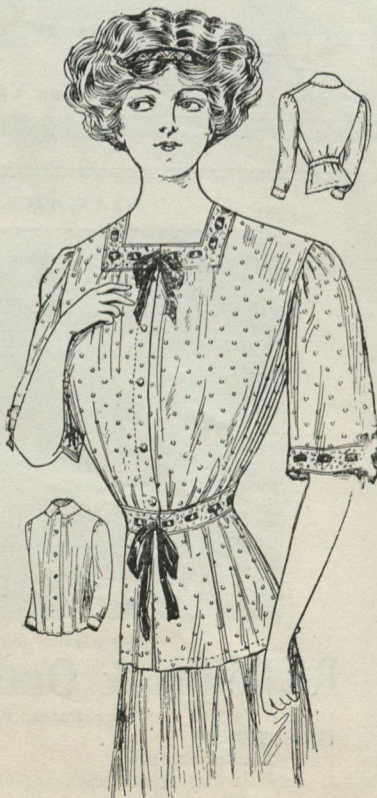
The quantity of material required for the medium size, 4 years, is $3\frac{3}{4}$ yards 27, $2\frac{5}{8}$ yards 36, or 2 yards 44 inches wide.

The pattern, 6717, is cut in sizes for boys of 2, 4 and 6 years of age.

Plain Shirt Waist

THE plain shirt waist that is made in peasant style is a new and smart one. This one is finished with the regulation box plait and with regulation sleeves, but it is no trouble to make, as the sleeves make part of the waist and do not require fitting to the armholes. The under-arm gores that are extended into the sleeve portions to form gussets provide additional freedom and snug fit. In the illustration, French percale is finished with simple stitching, but waists of this kind are made from all simple, seasonable materials, silk and flannel, as well as the washable ones.

The blouse is made with two main portions, that are joined at the center back, and the under-arm gores. The openings in the sleeves are finished with over-laps and the straight cuffs are joined to the lower edges. The pocket can be used or omitted as liked. The



House Jacket Pattern No. 6580

neck can be finished either with a neck-band or round collar.

For the medium size will be required $2\frac{3}{8}$ yards of material 27, $2\frac{1}{4}$ yards 36 or 44 inches wide.

The pattern, No. 7070, is cut in sizes for a 34, 36, 38, 40, 42 and 44 inch bust measure.

House Jacket

BREAKFAST jackets that can be belted are always desirable ones. This one can be treated in that way or left loose as preferred, and it also allows a choice for square or high neck, elbow or long sleeves, so that it really supplies every demand. Ring dotted cotton foulard is the material illustrated with trimming of beading threaded with ribbon. When made with square neck the fronts are cut out but the back is left high.

The jacket is made with fronts and back. The fronts are slightly full and finished with hems. When cut out to form the square they are joined to a narrow band, when made high they are finished with the rolled-over collar. The elbow sleeves are made simply in one piece each, gathered at their upper edges. The long sleeves are moderately full and gathered into bands at the wrists.

The quantity of material required for the medium size is 4 yards 27, $3\frac{3}{4}$ yards



Apron Pattern No. 6952

32, or 2 yards 44 inches wide, with $2\frac{1}{4}$ yards of banding.

The pattern, 6580, is cut in sizes for a 34, 36, 38, 40, 42 and 44-inch bust measure.

Work Apron

THE apron that is becoming and attractive, at the same time that it is protective, is the perfect one. Here is a model that, added to all its other advantages is easy to make and easy to slip on and off. It is supplied with big pockets that add to its convenience.

The apron is made with front and side portions. The front is extended to form straps and the side portions are lapped at the back. There is a belt which is attached to one side of the apron and buttoned into place at the other. The straps are crossed and buttoned to the belt. The pockets are arranged over the side-fronts and stitched to position.

For the medium size the apron will require $4\frac{1}{4}$ yards of material 27 or 36 inches wide.

The pattern, No. 6952, is cut in three sizes, small 34 or 36, medium 38 or 40, large 42 or 44 inches bust.

H.P. SAUCE

is being widely imitated. So be careful of the bottle you buy.

H.P. Sauce has a Taste, a Quality, a Value all its own. It is a Sauce of Character

That's the bottle



Oriental Fruits and Spices blended cunningly with pure malt vinegar—that's the secret of H.P.'s wondrous flavour.

That's the bottle

Hot or cold meats, fish, flesh, or bread and cheese, H.P. works wonders with them all

Grocers sell H.P.

Baby's Own Soap

unequalled for toilet and nursery use.

"Best for baby—best for you."

Refuse all substitutes.

Albert Soaps Limited

Mfrs., Montreal. 1911

THE COAST LINE TO MACKINAC

DETROIT CLEVELAND BUFFALO NIAGARA FALLS

TOLEDO PT. HURON GODERICH ALPENA ST. IGNACE

THE LUXURY OF A LAKE TRIP

Where will you spend your summer vacation? Why not enjoy the charms of our Inland Seas, the most pleasant and economical outing in America?

Where You Can Go

Daily service is operated between Detroit and Cleveland, Detroit and Buffalo; four trips weekly between Toledo, Detroit, Mackinac Island and way ports; three trips weekly between Toledo, Cleveland and Put-in-Bay.

A Cleveland to Mackinac special steamer will be operated two trips weekly from June 15th to September 10th, stopping only at Detroit every trip and Goderich, Ont., every other trip.

Special Day Trips Between Detroit and Cleveland, During July and August

Send 2 cent stamp for Illustrated Pamphlet and Great Lakes Map.

Address: L. G. Lewis, G. P. A.

Detroit, Michigan

Philip H. McMillan, President

A. A. Schantz, General Manager

Detroit & Cleveland Nav. Co.