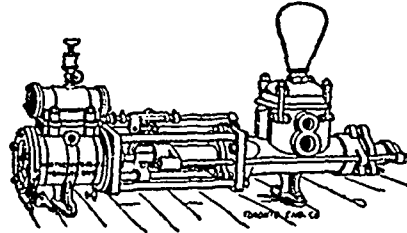


Waterous Engine Works Co.,

WINNIPEG, MAN.

Engines and Boilers,
Saw Mills.

Saw Mill Machinery,
Northey's Steam Pumps,
Grain Choppers,



Wm. Ferguson,

—WHOLESALE—

Wines, Liquors and Cigars

8th Street, Brandon.

LYMAN BROS. & CO.,

WHOLESALE

DRUGS AND MEDICINES

Every requisite for the Drug Trade
promptly supplied.

TORONTO, ONT.

P.A.I.N.T.

Get ready for Trade.

Stock up with —

RAMSAY'S

RUSSIAN PURE LEAD.
UNICORN MIXED PAINT.
UNICORN OIL STAINS.
COLORS IN OIL.
VARNISHES, Etc., Etc.

W. G. McMAHON, Winnipeg,
Representative for Manitoba.

A. RAMSAY & SON.,

MONTREAL.

STUART & HARPER

AGENTS FOR

Stratford Mill Building Co.

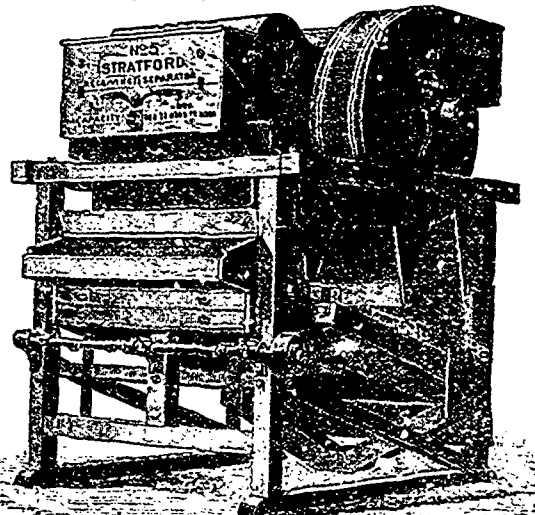
Flour Mill and Elevator Machinery

Dustless Warehouse and Elevator
Separators

Dodge Wood Pulleys

New and Second-hand Machinery
of all kinds.

758 to 764 Main Street,
Winnipeg.



Cigars

Made in your own Country.

HISPANIA, RED CROSS, KHEWIVE

Try these Brands. They are Unsurpassed.

—BRYAN & LEE, Winnipeg.

Andrew Allan, President. John McKechnie, Supt.
F. H. Brydges, Vice-President. W. R. Allan, Sec.-Treas.

THE VULCAN IRON COMPANY,
OF MANITOBA LIMITED

MILL ROLLS GROUND & CORRUGATED.
Architectural Iron Work.

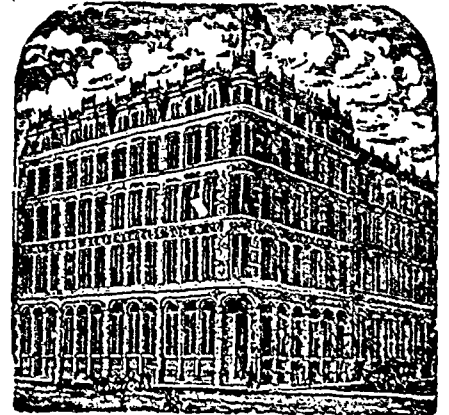
ENGINE AND BOILER WORKS,
GENERAL BLACKSMITHING.

BRIDGE BUILDING A SPECIALTY.
TENDERS SOLICITED.

POINT DOUGLAS AVE., WINNIPEG.

S. Greenshields Son & Co.

MONTREAL AND VANCOUVER, B.C.



We are offering for Spring Delivery the
following special lines:

Crums' Prints. Tokio Prngees.

Priestley's Waterwitch Serges, Cravenettes,
Coutilles, Lustres & other Mohair Effects.

Harrison's Brussel's Carpets.

Also a very large range of COTTON GOODS.

Samples with C. J. REDMOND, Room 18,
McIntyre Block, Winnipeg.

McMASTER & CO.,

—WHOLESALE—

Woollens, Tailor's, Trimmings,

CARPETS,

AND GENERAL DRY GOODS.

TORONTO, ONT.

REPRESENTED BY E. C. S. WETMORE.

JAS. MCCREADY & CO.,

WHOLESALE

Boot and Shoe Manufacturers,
MONTREAL

W. A. ILLIAMS, AGENT.

SAMPLE ROOM—Room M, McIntyre Block
MAIN STREET, WINNIPEG.

**M. and L. Samuel
Benjamin & Co.,**

26, 28, 30 FRONT STREET, WEST.
TORONTO

* Shelf and Heavy Hardware,

* Metals, Tin Plate, etc.

* Lamp Goods and Gas Fixtures.

Plumbers and Steam Fitters' Supplies

Special attention given to import and
export trade.

English House: Samuel Sons & Benjamin,
161 Fenchurch St., London, E.C.