



CANADA
DEPARTMENT OF NATIONAL DEFENCE
ARMY SURVEY ESTABLISHMENT

REFERENCE

- Roads:
hard surface, all weather... more than 2 lanes Part completed
hard surface, all weather... 2 lanes less than 2 lanes
loose surface, all weather... more than 2 lanes All weather
loose surface, less than 2 lanes All weather
loose surface, less than 2 lanes Dry weather
Special Snow Road, etc.
- Cart Track Footpath Trail... Cart Track Footpath or Trail
- Railways:
standard gauge, multiple track... Station
standard gauge, single track... Stop
narrow gauge, multiple track... Stop
narrow gauge, single track... on Road
Tramway
- Bridge, underpass or overpass
- Boundary, International...
Province or State...
County or District...
Township, Seignior or Parish...
City or Town...
Reservation, Indian, Military, etc.
- Electric Power Line... on Steel Towers on Wood Poles
Telephone, trunk route...
Triangulation Station...
Boundary Mon. Survey Mon...
Bench Mark... BM 679.1
Spot Elevation, (in feet)... 548
House, Barn...
Buildings...
Mill or Factory, small, Saw Mill, etc... SM
School... S
Church...
... with conspicuous Tower or Spire...
Post Office... P
Telephone Exchange... T
Mine or Open Cut...
Cemetery or Churchyard... C CA
Quarry...
Sand or Gravel Pit...
Cliff...
Cutting...
Embankment, Dump, etc...
Lighthouse...
Wharf or Pier...
Foreshore Flats...
Swamp or Marsh...
Lake or Slough, intermittent...
Glacier or Snowfield... or
Stream, intermittent...
Irrigation Canal, Ditches...
Inundated Land...
Contours, elevation...
... depression...
... approximate...
Relief, not indicated by Contours...
Wooded Areas, heavy...
... light...

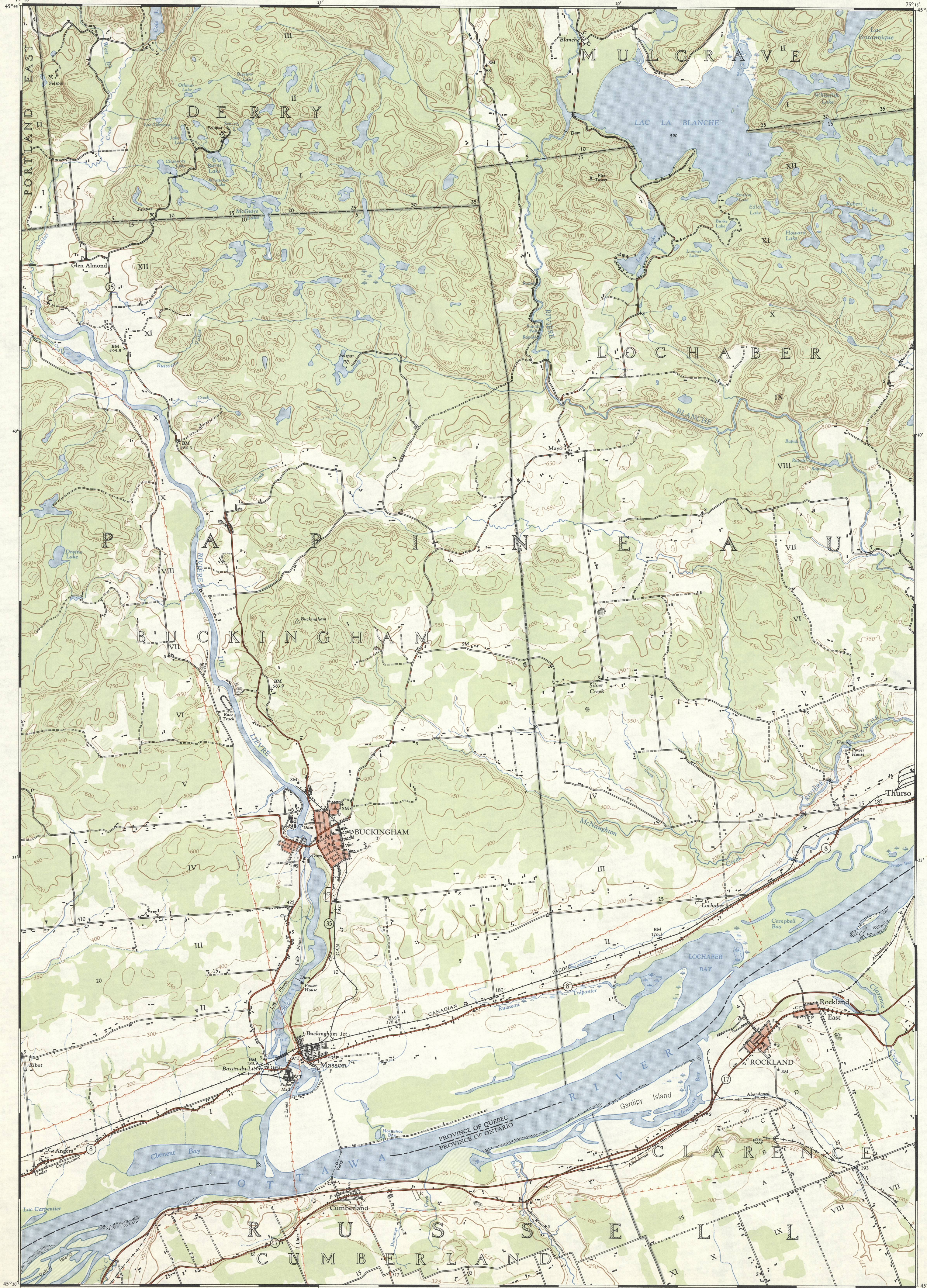
INDEX TO ADJOINING SHEETS

| | | |
|-----------|---------|------------|
| 31 G/3 | 31 G/4 | 31 G/5 |
| 31 G/2 | 31 G/1 | 31 G/0 |
| WAKEFIELD | THURSO | HAWKESBURY |
| 31 G/5 | 31 G/6 | 31 G/7 |
| OTTAWA | RUSSELL | ALEXANDRIA |

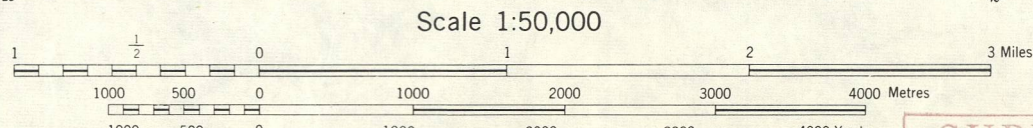
See "Index to Maps Available" for sheets published.

The general public may obtain copies of this map from the Map Distribution Office, Dept. of Mines and Technical Surveys, Ottawa, at 25 cents per copy.

THURSO
QUEBEC — ONTARIO
31 6/11 WEST HALF
SECOND EDITION



Original Survey by the Army Survey Establishment R.C.E. 1909
Aerial photography by the R.C.A.F. 1949
Resurveyed, compiled, drawn and printed by the A.S.E. 1950-52
MAGNETIC DECLINATION 14°16' WEST
AT CENTRE OF SHEET, 1952
Annual magnetic change 2.5° easterly



SUPERSEDED
EDITION

CONTOUR INTERVAL 50 FEET
SOUTH OF RIVER 25 FEET
All Elevations in Feet above Mean Sea Level
CONVERSION SCALE FOR ELEVATIONS
Feet Metres