

POOR DOCUMENT M C 2035

THE EVENING TIMES AND STAR, ST. JOHN, N. B., TUESDAY, FEBRUARY 17, 1920

LOCAL NEWS

People, your money has the full currency if you shop at our hold-down-price sale. Bassen's, 14-16-18 Charlotte street. No branches. 2-19

VALUE OF TRAINED MEN
Chemists and laboratory men wanted in hundreds of Canadian industries. Get effective training by home study. Good salaries assured. International Correspondence Schools, 18 Sydney street, St. John, N. B.

On our dollar day your dollar will have a wonderful purchasing power at Bassen's, 14-16-18 Charlotte street. No branches. 2-19

Ladies' suits, \$40 to \$75—Morrin. 109846-2-19

NOTICE
Local 1544, Ship Carpenters and Joiners' meeting Tuesday evening, 8 o'clock, Oddfellows' Hall, Union street. All members requested to attend. 109876-2-19

Whatever shopping you have to do your dollar has more purchasing power and is more powerful at our store on dollar day. Bassen's, 14-16-18 Charlotte street. No branches. 2-19

EXHIBITION OF ETCHINGS.
One hundred and twenty-five copper-plate etchings by the Painter-Etchers Society of Ontario will be shown at the Art Club Tuesday, Wednesday, Thursday, Feb. 17, 18, 19 from 8 o'clock. Admission 10c, children 5c. 109875-2-19

NO MATINEE.
Two nights only, Monday and Tuesday, Feb. 16 and 17, at the Imperial Theatre, starting at 8 p. m. sharp. The seat plan is on view in the Imperial lobby from 10 a. m. to 6 p. m. A few good seats are yet to be had for either night. Positively no matinee as in former years. 109866-2-19

KNIGHTS OF PYTHIAS
In St. John West and vicinity are earnestly requested to attend an informal meeting at the "Prestige Boys' Hall" Guilford street, Friday, Feb. 20, at 8:15 p. m. City members also welcome.

You can make one dollar do the work of two if you shop here on Dollar Day. Daniel, head King street. 2-18

Modern dancing taught in private classes. A. M. Green. Phone 3087-11. 109892-2-19

Shop here on Dollar Day where your dollars will have the greatest buying power. Daniel, head King street. 2-18

Dollar Day at F. W. Daniel & Co., the biggest thing in town. It will pay you to be on hand early. 2-18

For sale at a bargain, lady's muskrat coat, bust 35. 26 Wall street. 2-19.

Our Dollar Day bargains are real price magnets. Daniel, head King street. 2-18

"WE SERVE"
Walter C. Stirling, who has had six years' experience on the mechanical end of the typewriter, has returned to this city from Montreal and will have full charge of our service department. "If it can be done, Walter can do it." St. John Typewriter & Specialty Co., Ltd., corner Mill and Union streets. 2-18

Many bargains here for Dollar Day due to forehand buying. Daniel, head King street. 2-18

Try Crescent Candy Co.'s popular lines. 14.

LLOYD GEORGE AND CANADA'S STATUS IN THE LEAGUE

(Canadian Press Despatch)
Ottawa, Feb. 17.—An interesting side light on the attitude of Great Britain toward Canada's rights to a vote in the League of Nations is furnished in a letter written on September 1, 1919, by David Lloyd George, premier of Britain, and made available for publication today in view of its particular interest at the present time. The letter in question, which was written to a Canadian correspondent, reads in part as follows: "We have much to learn from one another and much to learn to do in common. Especially is this so now that Canada, with the other dominions has been accorded national status at the Peace Conference."

AN INFLAMMATORY DOCUMENT TAKEN FROM BOLSHEVIKI

(Canadian Press Despatch)
London, Feb. 16.—An inflammatory document of the most important character has been seized on the person of a Bolshevik agent arrested here on the way to the United States, it was learned today. The document consists of a letter addressed, "to our American comrades," and signed by M. Bucharin, president of the Third International of Moscow, declaring the time to be ripe for the operation of a communist party in the United States.

The programme given in the communication is first, the establishment of a government of workers, secondly, the overthrow of the capitalists and the management of the factories by the workers, and thirdly, the seizure by the workers of the food supply organization.

GREAT BRITAIN IS TAKING NO RESPONSIBILITY

(Canadian Press Despatch)
London, Feb. 16.—Andrew Bonar Law, the government spokesman, said in the House of Commons today that Great Britain had informed the Baltic states, Finland and Poland, that the question of peace or war with Soviet Russia was one they must decide on their own responsibility. Great Britain taking no responsibility in the matter.

Mr. Bonar Law made this statement in reply to a question as to what steps had been taken by the Allies to encourage the Russian border states to make peace with Soviet Russia.

London, Feb. 17.—Black and White were the names of the bride and a bridegroom of a North London wedding. The name of the best man was Brown.

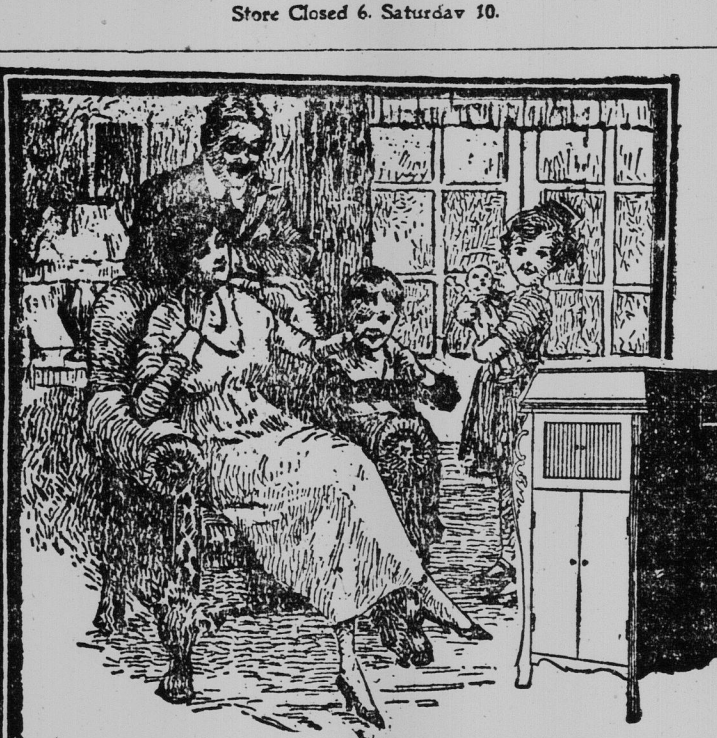
English China

CUPS, SAUCERS AND TEA PLATES
A Choice Variety, Rosebud and Conventional Designs.
Dainty Colorings in Mauve, Pink, Green and Blue.
AT REASONABLE PRICES.
SEE OUR WINDOW DISPLAY.

O. H. WARWICK CO., LIMITED
78-82 King Street

"MILL REMNANTS OF WHITE SHEETING"
Just Put in Stock
About 1,000 yards of White Sheeting Remnants, 8-4 and 9-4 widths. They are worth looking over.

245 Waterloo Street. Store Closed 6. Saturday 10.



Children and Music

FEW GROWN-UPS fully realize what music means to children—only a child holds the key to those elfin lands of delight—the fairy realm of a child's imagination, peopled by brave knights and proud princesses.

Good music is as necessary to children as healthy exercise. A little one dancing to a merry tune, or listening open-eyed to wonder music that brings with it its picture of fairies and silver castles, is an exquisite thing to see. Such music is provided by the

Cremonaphone TALKING MACHINE

The Machine that Plays All Records.
You and your little ones will learn no finer appreciation of music than through this exquisitely toned instrument. Our easy payment plan puts a Cremonaphone within the reach of all.

LET US HEAR FROM YOU.

AMHERST PLANOS LIMITED
7 Market Square

COMMENDATION FOR WORK OF THE TRAVELERS' AID

The board of directors of the Y. W. C. A. at its regular meeting in the King street building, yesterday, heard with pleasure that the work of the Travelers' Aid was being appreciated and that both the King street home and the recreational centre in King street east were becoming more and more essential to the life of the girls of the city. Mrs. John A. McAvity, the president, was in the chair and led the opening devotional exercises.

The report of the recreational centre referred to the fact that as yet no physical director had been procured, though efforts in this direction had been unceasing. Miss K. McK. Matheson, the general secretary, is now taking charge of the physical director's work and of the recreational centre work also. Four new gymnasium classes were reported to have been formed, two for ladies and two for high school girls, making a total enrollment in the gymnasium classes of 808.

At the C. G. I. T. rally in the building, there were 400 girls present. The report spoke also of the recreational centre as gaining constantly in its attraction for the girls.

The campaign for sustaining membership and for support from the business firms was reported on and it was said that only about one half of the objective had been reached but that the canvass was not yet completed.

The King street house report told of 899 meals served in the cafeteria during the month and was in other respects also very satisfactory.

Miss Hoyt gave her report of the work of the Travelers' Aid, which told of 816 trains and twenty-six boats met, of 105 persons taken to the Travelers' Aid Home, employment found for four and 129 helped in other ways. At the transient home 158 meals were served and 168 beds provided during the month.

A letter from Mrs. Olivia Myles informed the Y. W. C. A. that Mrs. Myles' mother had left a sum of money, the interest of which was to be given to the association each year. This gift was accepted with gratitude and it was decided that the money should be placed in the special fund that is kept for emergency calls.

The Y. W. C. A. decided to seek affiliation with the Local Council of Women and to throw open its building

Dollar Day means extra values. Every day is dollar day for "B" Brand Cider users.

The Maritime Cider Co. St. John, N. B.

SPECIALS AT Brown's Grocery Co.

86 Brussels Street, Phone Main 2666
Cor. King and Ludlow Streets, West
Phone W. 166

JAMS
4 lb. Tins Pure Fruit Jam, 75c.
4 lb. Tins Orange Marmalade, 95c.
4 lb. Tins Pure Strawberry, \$1.25
4 lb. Tins Pure Raspberry, 40c.
4 lb. Tins Pure Raspberry Jam, 40c.
4 lb. Tins Pure Strawberry, 40c.
4 lb. Tins Pure Raspberry, 40c.
4 lb. Tins Pure Strawberry, 40c.
4 lb. Tins Pure Raspberry, 40c.

CRISCO
1 lb. Tins, 11c.
5 lb. Tins, 55c.
10 lb. Tins, \$1.10
2 lbs. Tins, 22c.
2 lbs. Tins, 22c.
2 lbs. Tins, 22c.
2 lbs. Tins, 22c.
2 lbs. Tins, 22c.
2 lbs. Tins, 22c.

Specials at Malone's TEA
Teas at Old Prices a Few Days Longer.
Choice Orange Pekoe, 47c. lb.
In 5 lb. Lots, 45c. lb.
Lipton's Tea, regular 55c. kind, 55c. lb.
Choice Ceylon, 55c. and 65c. lb.
3 cakes Sunny Monday Soap, 25c.
4 cakes Sail Soap, 25c.
3 cakes Large Lemon Soap, 25c.
Choice Dairy Butter, 68c. lb.
Choice White Beans, 17c. qt.
Best Bean Pork, 35c. lb.
Best Canadian Cheese, 34c. lb.
Small Picnic Ham, 30c. bottle
Regular 10c. Matches, 2 boxes, 25c.
Smoked Fish, large boxes, 23c.
2 cans Tomato Soup, 25c. lb.
Fancy Evaporated Apples, 25c. lb.
Simms' Little Beauty Brooms, 90c. each
Best Mixed Pickles, 30c. bottle
Best Mustard Pickles, 30c. bottle
Sweet Mixed Pickles, bulk, 25c. pint

Specials At Malone's TEA

Teas at Old Prices a Few Days Longer.
Choice Orange Pekoe, 47c. lb.
In 5 lb. Lots, 45c. lb.
Lipton's Tea, regular 55c. kind, 55c. lb.
Choice Ceylon, 55c. and 65c. lb.
3 cakes Sunny Monday Soap, 25c.
4 cakes Sail Soap, 25c.
3 cakes Large Lemon Soap, 25c.
Choice Dairy Butter, 68c. lb.
Choice White Beans, 17c. qt.
Best Bean Pork, 35c. lb.
Best Canadian Cheese, 34c. lb.
Small Picnic Ham, 30c. bottle
Regular 10c. Matches, 2 boxes, 25c.
Smoked Fish, large boxes, 23c.
2 cans Tomato Soup, 25c. lb.
Fancy Evaporated Apples, 25c. lb.
Simms' Little Beauty Brooms, 90c. each
Best Mixed Pickles, 30c. bottle
Best Mustard Pickles, 30c. bottle
Sweet Mixed Pickles, bulk, 25c. pint

Specials At Malone's TEA

Teas at Old Prices a Few Days Longer.
Choice Orange Pekoe, 47c. lb.
In 5 lb. Lots, 45c. lb.
Lipton's Tea, regular 55c. kind, 55c. lb.
Choice Ceylon, 55c. and 65c. lb.
3 cakes Sunny Monday Soap, 25c.
4 cakes Sail Soap, 25c.
3 cakes Large Lemon Soap, 25c.
Choice Dairy Butter, 68c. lb.
Choice White Beans, 17c. qt.
Best Bean Pork, 35c. lb.
Best Canadian Cheese, 34c. lb.
Small Picnic Ham, 30c. bottle
Regular 10c. Matches, 2 boxes, 25c.
Smoked Fish, large boxes, 23c.
2 cans Tomato Soup, 25c. lb.
Fancy Evaporated Apples, 25c. lb.
Simms' Little Beauty Brooms, 90c. each
Best Mixed Pickles, 30c. bottle
Best Mustard Pickles, 30c. bottle
Sweet Mixed Pickles, bulk, 25c. pint

Specials At Malone's TEA

Teas at Old Prices a Few Days Longer.
Choice Orange Pekoe, 47c. lb.
In 5 lb. Lots, 45c. lb.
Lipton's Tea, regular 55c. kind, 55c. lb.
Choice Ceylon, 55c. and 65c. lb.
3 cakes Sunny Monday Soap, 25c.
4 cakes Sail Soap, 25c.
3 cakes Large Lemon Soap, 25c.
Choice Dairy Butter, 68c. lb.
Choice White Beans, 17c. qt.
Best Bean Pork, 35c. lb.
Best Canadian Cheese, 34c. lb.
Small Picnic Ham, 30c. bottle
Regular 10c. Matches, 2 boxes, 25c.
Smoked Fish, large boxes, 23c.
2 cans Tomato Soup, 25c. lb.
Fancy Evaporated Apples, 25c. lb.
Simms' Little Beauty Brooms, 90c. each
Best Mixed Pickles, 30c. bottle
Best Mustard Pickles, 30c. bottle
Sweet Mixed Pickles, bulk, 25c. pint

Specials At Malone's TEA

Teas at Old Prices a Few Days Longer.
Choice Orange Pekoe, 47c. lb.
In 5 lb. Lots, 45c. lb.
Lipton's Tea, regular 55c. kind, 55c. lb.
Choice Ceylon, 55c. and 65c. lb.
3 cakes Sunny Monday Soap, 25c.
4 cakes Sail Soap, 25c.
3 cakes Large Lemon Soap, 25c.
Choice Dairy Butter, 68c. lb.
Choice White Beans, 17c. qt.
Best Bean Pork, 35c. lb.
Best Canadian Cheese, 34c. lb.
Small Picnic Ham, 30c. bottle
Regular 10c. Matches, 2 boxes, 25c.
Smoked Fish, large boxes, 23c.
2 cans Tomato Soup, 25c. lb.
Fancy Evaporated Apples, 25c. lb.
Simms' Little Beauty Brooms, 90c. each
Best Mixed Pickles, 30c. bottle
Best Mustard Pickles, 30c. bottle
Sweet Mixed Pickles, bulk, 25c. pint

Specials At Malone's TEA

Teas at Old Prices a Few Days Longer.
Choice Orange Pekoe, 47c. lb.
In 5 lb. Lots, 45c. lb.
Lipton's Tea, regular 55c. kind, 55c. lb.
Choice Ceylon, 55c. and 65c. lb.
3 cakes Sunny Monday Soap, 25c.
4 cakes Sail Soap, 25c.
3 cakes Large Lemon Soap, 25c.
Choice Dairy Butter, 68c. lb.
Choice White Beans, 17c. qt.
Best Bean Pork, 35c. lb.
Best Canadian Cheese, 34c. lb.
Small Picnic Ham, 30c. bottle
Regular 10c. Matches, 2 boxes, 25c.
Smoked Fish, large boxes, 23c.
2 cans Tomato Soup, 25c. lb.
Fancy Evaporated Apples, 25c. lb.
Simms' Little Beauty Brooms, 90c. each
Best Mixed Pickles, 30c. bottle
Best Mustard Pickles, 30c. bottle
Sweet Mixed Pickles, bulk, 25c. pint

Specials At Malone's TEA

Teas at Old Prices a Few Days Longer.
Choice Orange Pekoe, 47c. lb.
In 5 lb. Lots, 45c. lb.
Lipton's Tea, regular 55c. kind, 55c. lb.
Choice Ceylon, 55c. and 65c. lb.
3 cakes Sunny Monday Soap, 25c.
4 cakes Sail Soap, 25c.
3 cakes Large Lemon Soap, 25c.
Choice Dairy Butter, 68c. lb.
Choice White Beans, 17c. qt.
Best Bean Pork, 35c. lb.
Best Canadian Cheese, 34c. lb.
Small Picnic Ham, 30c. bottle
Regular 10c. Matches, 2 boxes, 25c.
Smoked Fish, large boxes, 23c.
2 cans Tomato Soup, 25c. lb.
Fancy Evaporated Apples, 25c. lb.
Simms' Little Beauty Brooms, 90c. each
Best Mixed Pickles, 30c. bottle
Best Mustard Pickles, 30c. bottle
Sweet Mixed Pickles, bulk, 25c. pint

Specials At Malone's TEA

Teas at Old Prices a Few Days Longer.
Choice Orange Pekoe, 47c. lb.
In 5 lb. Lots, 45c. lb.
Lipton's Tea, regular 55c. kind, 55c. lb.
Choice Ceylon, 55c. and 65c. lb.
3 cakes Sunny Monday Soap, 25c.
4 cakes Sail Soap, 25c.
3 cakes Large Lemon Soap, 25c.
Choice Dairy Butter, 68c. lb.
Choice White Beans, 17c. qt.
Best Bean Pork, 35c. lb.
Best Canadian Cheese, 34c. lb.
Small Picnic Ham, 30c. bottle
Regular 10c. Matches, 2 boxes, 25c.
Smoked Fish, large boxes, 23c.
2 cans Tomato Soup, 25c. lb.
Fancy Evaporated Apples, 25c. lb.
Simms' Little Beauty Brooms, 90c. each
Best Mixed Pickles, 30c. bottle
Best Mustard Pickles, 30c. bottle
Sweet Mixed Pickles, bulk, 25c. pint

Specials At Malone's TEA

Teas at Old Prices a Few Days Longer.
Choice Orange Pekoe, 47c. lb.
In 5 lb. Lots, 45c. lb.
Lipton's Tea, regular 55c. kind, 55c. lb.
Choice Ceylon, 55c. and 65c. lb.
3 cakes Sunny Monday Soap, 25c.
4 cakes Sail Soap, 25c.
3 cakes Large Lemon Soap, 25c.
Choice Dairy Butter, 68c. lb.
Choice White Beans, 17c. qt.
Best Bean Pork, 35c. lb.
Best Canadian Cheese, 34c. lb.
Small Picnic Ham, 30c. bottle
Regular 10c. Matches, 2 boxes, 25c.
Smoked Fish, large boxes, 23c.
2 cans Tomato Soup, 25c. lb.
Fancy Evaporated Apples, 25c. lb.
Simms' Little Beauty Brooms, 90c. each
Best Mixed Pickles, 30c. bottle
Best Mustard Pickles, 30c. bottle
Sweet Mixed Pickles, bulk, 25c. pint

PAINLESS EXTRACTION Only 25c.

We Make the Best Teeth in Canada at the Most Reasonable Rates.
Boston Dental Parlors
Head Office: 527 Main St. Branch Office: 35 Charlotte St.
Phone 683. Phone 38
Dr. J. D. MAHER, Prop. Open 9 a. m. Until 9 p. m.

Robertson's Economy List

24 lb. Bag Ontario Flour, \$1.65
24 lb. Bag Manitoba Flour, \$1.90
10 lbs. Finest Granulated Sugar, \$1.50
10 lbs. Light Brown Sugar, \$1.45
Finest Orange Pekoe Tea, 55c.
Lipton's Tea, 55c.
Fresh Ground Coffee, 60c.
Red Rose Coffee, 65c.
1 lb. tin Pure Fruit Jam, 75c.
1 lb. tin Pure Orange Marmalade, 95c.
1 lb. tin Scotch Orange Marmalade, \$1.00
2 tumbler Pure Fruit Jam, 29c.
2 tumbler Pure Jelly, 29c.
16 oz. bottle Pure Plum, 33c.
16 oz. bottle Pure Peach, 33c.
16 oz. bottle Pure Marmalade, 33c.
1 lb. block Pure Lard, 22c.
1 lb. block Shortening, 33c.
3 lb. tin Shortening, 95c.
5 lb. tin Shortening, \$1.60
1 lb. tin Crisco, 35c.

Robertson's Economy List

Finest Shredded Coconut, 40c. lb.
9 lb. tin Crisco, \$3.15
20 lb. pail Pure Lard, \$6.75
20 lb. pail Shortening, \$6.25
20 lb. bag Outmeal, \$1.45
3 lbs. Oatmeal, 25c.
3 lbs. Western Corn Meal, 25c.
3 lbs. Granulated Cornmeal, 25c.
Cream of Wheat, 27c. pkg.
Cream of Barley, 27c. pkg.
Quaker Oatmeal, 32c. pkg.
Carnation Salmon, large, 23c.
Red Clover Salmon, 24c.
3 tins Carnation Milk, 25c.
2 tins Peas, 35c.
2 tins Corn, 35c.
2 tins Tomatoes, 35c.
2 tins Clams, 35c.
Finest Haddock, 20c.
Pumpkin, 11c.

Robertson's Economy List

Finest Shredded Coconut, 40c. lb.
9 lb. tin Crisco, \$3.15
20 lb. pail Pure Lard, \$6.75
20 lb. pail Shortening, \$6.25
20 lb. bag Outmeal, \$1.45
3 lbs. Oatmeal, 25c.
3 lbs. Western Corn Meal, 25c.
3 lbs. Granulated Cornmeal, 25c.
Cream of Wheat, 27c. pkg.
Cream of Barley, 27c. pkg.
Quaker Oatmeal, 32c. pkg.
Carnation Salmon, large, 23c.
Red Clover Salmon, 24c.
3 tins Carnation Milk, 25c.
2 tins Peas, 35c.
2 tins Corn, 35c.
2 tins Tomatoes, 35c.
2 tins Clams, 35c.
Finest Haddock, 20c.
Pumpkin, 11c.

Robertson's Economy List

Finest Shredded Coconut, 40c. lb.
9 lb. tin Crisco, \$3.15
20 lb. pail Pure Lard, \$6.75
20 lb. pail Shortening, \$6.25
20 lb. bag Outmeal, \$1.45
3 lbs. Oatmeal, 25c.
3 lbs. Western Corn Meal, 25c.
3 lbs. Granulated Cornmeal, 25c.
Cream of Wheat, 27c. pkg.
Cream of Barley, 27c. pkg.
Quaker Oatmeal, 32c. pkg.
Carnation Salmon, large, 23c.
Red Clover Salmon, 24c.
3 tins Carnation Milk, 25c.
2 tins Peas, 35c.
2 tins Corn, 35c.
2 tins Tomatoes, 35c.
2 tins Clams, 35c.
Finest Haddock, 20c.
Pumpkin, 11c.

Robertson's Economy List

Finest Shredded Coconut, 40c. lb.
9 lb. tin Crisco, \$3.15
20 lb. pail Pure Lard, \$6.75
20 lb. pail Shortening, \$6.25
20 lb. bag Outmeal, \$1.45
3 lbs. Oatmeal, 25c.
3 lbs. Western Corn Meal, 25c.
3 lbs. Granulated Cornmeal, 25c.
Cream of Wheat, 27c. pkg.
Cream of Barley, 27c. pkg.
Quaker Oatmeal, 32c. pkg.
Carnation Salmon, large, 23c.
Red Clover Salmon, 24c.
3 tins Carnation Milk, 25c.
2 tins Peas, 35c.
2 tins Corn, 35c.
2 tins Tomatoes, 35c.
2 tins Clams, 35c.
Finest Haddock, 20c.
Pumpkin, 11c.

Robertson's Economy List

Finest Shredded Coconut, 40c. lb.
9 lb. tin Crisco, \$3.15
20 lb. pail Pure Lard, \$6.75
20 lb. pail Shortening, \$6.25
20 lb. bag Outmeal, \$1.45
3 lbs. Oatmeal, 25c.
3 lbs. Western Corn Meal, 25c.
3 lbs. Granulated Cornmeal, 25c.
Cream of Wheat, 27c. pkg.
Cream of Barley, 27c. pkg.
Quaker Oatmeal, 32c. pkg.
Carnation Salmon, large, 23c.
Red Clover Salmon, 24c.
3 tins Carnation Milk, 25c.
2 tins Peas, 35c.
2 tins Corn, 35c.
2 tins Tomatoes, 35c.
2 tins Clams, 35c.
Finest Haddock, 20c.
Pumpkin, 11c.

Robertson's Economy List

Finest Shredded Coconut, 40c. lb.
9 lb. tin Crisco, \$3.15
20 lb. pail Pure Lard, \$6.75
20 lb. pail Shortening, \$6.25
20 lb. bag Outmeal, \$1.45
3 lbs. Oatmeal, 25c.
3 lbs. Western Corn Meal, 25c.
3 lbs. Granulated Cornmeal, 25c.
Cream of Wheat, 27c. pkg.
Cream of Barley, 27c. pkg.
Quaker Oatmeal, 32c. pkg.
Carnation Salmon, large, 23c.
Red Clover Salmon, 24c.
3 tins Carnation Milk, 25c.
2 tins Peas, 35c.
2 tins Corn, 35c.
2 tins Tomatoes, 35c.
2 tins Clams, 35c.
Finest Haddock, 20c.
Pumpkin, 11c.

Robertson's Economy List

Finest Shredded Coconut, 40c. lb.
9 lb. tin Crisco, \$3.15
20 lb. pail Pure Lard, \$6.75
20 lb. pail Shortening, \$6.25
20 lb. bag Outmeal, \$1.45
3 lbs. Oatmeal, 25c.
3 lbs. Western Corn Meal, 25c.
3 lbs. Granulated Cornmeal, 25c.
Cream of Wheat, 27c. pkg.
Cream of Barley, 27c. pkg.
Quaker Oatmeal, 32c. pkg.
Carnation Salmon, large, 23c.
Red Clover Salmon, 24c.
3 tins Carnation Milk, 25c.
2 tins Peas, 35c.
2 tins Corn, 35c.
2 tins Tomatoes, 35c.
2 tins Clams, 35c.
Finest Haddock, 20c.
Pumpkin, 11c.

Robertson's Economy List

Finest Shredded Coconut, 40c. lb.
9 lb. tin Crisco, \$3.15
20 lb. pail Pure Lard, \$6.75
20 lb. pail Shortening, \$6.25
20 lb. bag Outmeal, \$1.45
3 lbs. Oatmeal, 25c.
3 lbs. Western Corn Meal, 25c.
3 lbs. Granulated Cornmeal, 25c.
Cream of Wheat, 27c. pkg.
Cream of Barley, 27c. pkg.
Quaker Oatmeal, 32c. pkg.
Carnation Salmon, large, 23c.
Red Clover Salmon, 24c.
3 tins Carnation Milk, 25c.
2 tins Peas, 35c.
2 tins Corn, 35c.
2 tins Tomatoes, 35c.
2 tins Clams, 35c.
Finest Haddock, 20c.
Pumpkin, 11c.

Robertson's Economy List

Finest Shredded Coconut, 40c. lb.
9 lb. tin Crisco, \$3.15
20 lb. pail Pure Lard, \$6.75
20 lb. pail Shortening, \$6.25
20 lb. bag Outmeal, \$1.45
3 lbs. Oatmeal, 25c.
3 lbs. Western Corn Meal, 25c.
3 lbs. Granulated Cornmeal, 25c.
Cream of Wheat, 27c. pkg.
Cream of Barley, 27c. pkg.
Quaker Oatmeal, 32c. pkg.
Carnation Salmon, large, 23c.
Red Clover Salmon, 24c.
3 tins Carnation Milk, 25c.
2 tins Peas, 35c.
2 tins Corn, 35c.
2 tins Tomatoes, 35c.
2 tins Clams, 35c.
Finest Haddock, 20c.
Pumpkin, 11c.

Robertson's Economy List

Finest Shredded Coconut, 40c. lb.
9 lb. tin Crisco, \$3.15
20 lb. pail Pure Lard, \$6.75
20 lb. pail Shortening, \$6.25
20 lb. bag Outmeal, \$1.45
3 lbs. Oatmeal, 25c.
3 lbs. Western Corn Meal, 25c.
3 lbs. Granulated Cornmeal, 25c.
Cream of Wheat, 27c. pkg.
Cream of Barley, 27c. pkg.
Quaker Oatmeal, 32c. pkg.
Carnation Salmon, large, 23c.
Red Clover Salmon, 24c.
3 tins Carnation Milk, 25c.
2 tins Peas, 35c.
2 tins Corn, 35c.
2 tins Tomatoes, 35c.
2 tins Clams, 35c.
Finest Haddock, 20c.
Pumpkin, 11c.

Robertson's Economy List

Finest Shredded Coconut, 40c. lb.
9 lb. tin Crisco, \$3.15
20 lb. pail Pure Lard, \$6.75
20 lb. pail Shortening, \$6.25
20 lb. bag Outmeal, \$1.45
3 lbs. Oatmeal, 25c.
3 lbs. Western Corn Meal, 25c.
3 lbs. Granulated Cornmeal, 25c.
Cream of Wheat, 27c. pkg.
Cream of Barley, 27c. pkg.
Quaker Oatmeal, 32c. pkg.
Carnation Salmon, large, 23c.
Red Clover Salmon, 24c.
3 tins Carnation Milk, 25c.
2 tins Peas, 35c.
2 tins Corn, 35c.
2 tins Tomatoes, 35c.
2 tins Clams, 35c.
Finest Haddock, 20c.
Pumpkin, 11c.

Robertson's Economy List

Finest Shredded Coconut, 40c. lb.
9 lb. tin Crisco, \$3.15
20 lb. pail Pure Lard, \$6.75
20 lb. pail Shortening, \$6.25
20 lb. bag Outmeal, \$1.45
3 lbs. Oatmeal, 25c.
3 lbs. Western Corn Meal, 25c.
3 lbs. Granulated Cornmeal