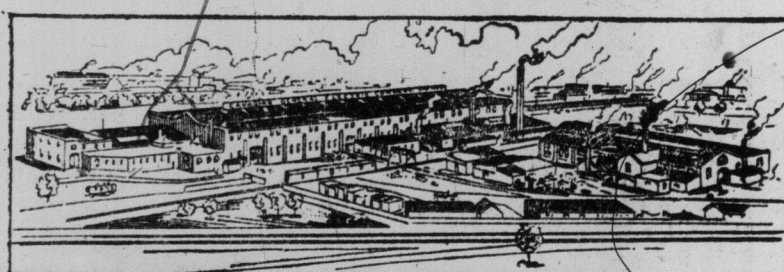


A Great Canadian Industry

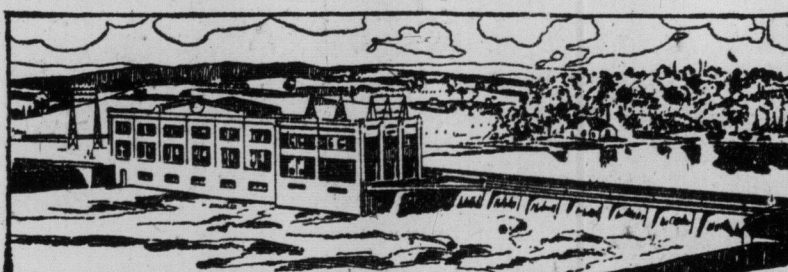
CAPITAL PAID UP . . . Ten Million Dollars
RESERVES . . . Over Four Million Dollars
TOTAL ASSETS . . . Over Twenty Million Dollars

Wages Paid during 1918 . . . Over Five Million Dollars
Materials Purchased, 1918 . . . Over Nine Million Dollars

MANUFACTURING PLANTS



Electric Fitting and Supply Works, Toronto, Ont.



No. 1 Power House, Peterboro, Ont.



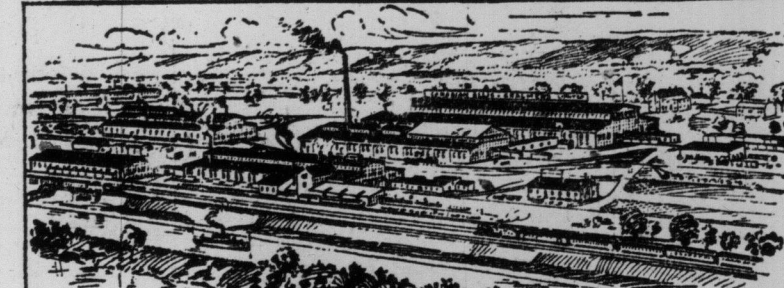
Davenport Works, Toronto, Ont.



Carbon and Mazda Lamp Works, Toronto, Ont.



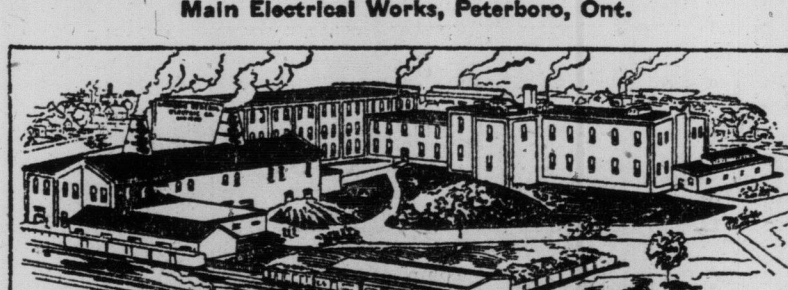
Main Electrical Works, Peterboro, Ont.



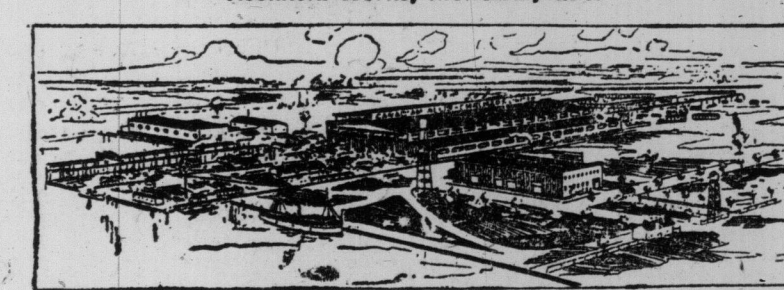
Rockfield Works, Montreal, Que.



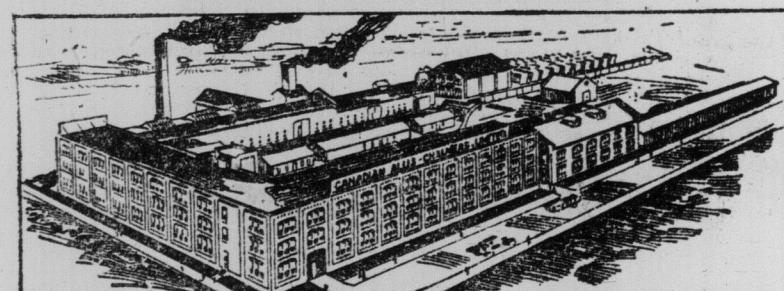
Mazda Lamp Works, Montreal, Que.



Electrical Porcelain Works, Peterboro, Ont.



Niagara Shipyard, Bridgeburg, Ont.



Milling and Power Transmission Machinery Works, Stratford, Ont.

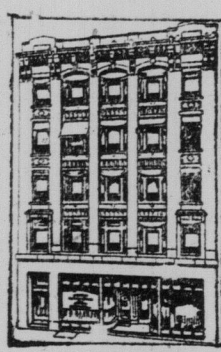


No. 2 Power House, Peterboro, Ont.



Architectural Bronze and Iron Works, Toronto, Ont.

OFFICES AND WAREHOUSES



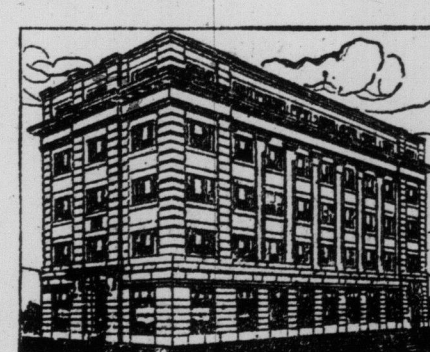
Ottawa, Ont.



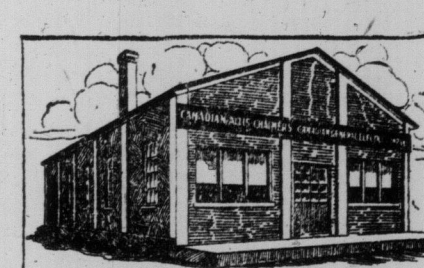
Montreal, Que.



Head Office and Warehouse, Toronto, Ont.



Calgary, Alta.



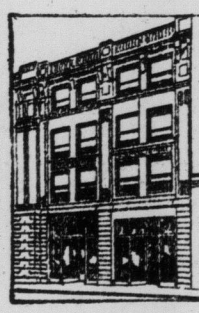
South Porcupine, Ont.



Vancouver, B.C.



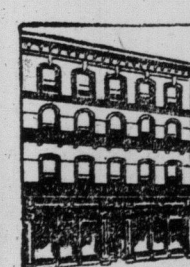
Cobalt, Ont.



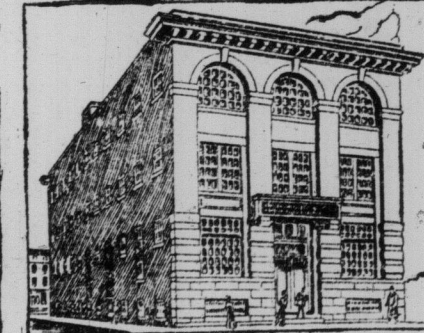
London, Ont.



Quebec, Que.



Halifax, N.S.



Winnipeg, Man.

Complete Stocks of
Electric and Automobile Supplies
are carried at all Branches

CANADIAN GENERAL ELECTRIC CO., Limited

Manufacturers of every class of Electrical Apparatus, Supplies, Sunbeam and Mazda Electric Lamps.

CANADIAN ALLIS-CHALMERS, Limited

Engineers—Iron and Brassfounders—Boilermakers—Shipbuilders

DESIGNERS AND BUILDERS OF

MARINE ENGINES
MARINE BOILERS
STEERING ENGINES

SURFACE CONDENSERS
BILGE AND FEED PUMPS
EDWARDS' AIR PUMPS

CENTRIFUGAL PUMPS
SHIPS' WINCHES
PROPELLERS

BLAST FURNACES AND HEAVY MILL MACHINERY

HYDRAULIC TURBINES
LOCOMOTIVES
STRUCTURAL STEEL

ARCHITECTURAL BRONZE
AND IRON WORK
FLOUR MILL MACHINERY

