

iridescent as the result of corrosion. On the extraction of the alkali by water this lime is left behind with the silica, and forms with it a hard, insoluble silicate of lime, which adheres to the corroded surface of the glass, forming an opaque scum or patina. In some cases this is so marked that the glass appears to be covered with a coat of cement.

"The peculiar pitting of old stained glass is not, however, in the author's opinion, due to corrosion at all, but to a change in the constitution of the glass. As is well known, glass changes its constitution and becomes crystalline if kept at a red heat for a length of time. What happens in a few hours when the glass is hot tends to take place on prolonged exposure to the atmosphere, with this difference: that when the glass is molten its molecules can freely move about, whereas when it is cold and rigid such freedom of movement is impossible; in consequence the definite formation of crystals can not take place, and the result of the change is different. What happens is this: In the first place, molecules of the same kind tend to separate out from the homogeneous mixture and collect round a point forming a centre of decom-

position. Proceeding from this centre the glass is found decomposing into definite compounds in an ever-enlarging circle until it reaches a point at which the strain set up in the glass by this molecular movement results in a crack forming round the area of decomposition, and then the whole mass comes away, leaving behind it a little hole or pit in the surface of the glass."

BIRCH FLOORING VENEER FLOORING

SEND FOR CATALOGUE
AND SAMPLES

THE KNIGHT BROTHERS CO., LIMITED
BURKS FALLS, ONT.

TO ARCHITECTS AND SURVEYORS

A. London, Architect and Surveyor, would like to meet with a partnership (or a bona fide opening of a new connection) in a part of Canada with a mild climate. Fully qualified in design and construction; first class quantity surveyor by latest and best systems. First class references given and required. Please write

A. CASSE, 475 High Road,
Chiswick, London, W.

The Roofers' Supply Co. LIMITED

WHOLESALE AND RETAIL DEALERS IN
ALL KINDS OF ROOFING MATERIAL

Slate, Roofing Felt, Roofing Pitch, Terra Cotta Tiles, Galvanized Iron, Sheet Copper, Slate Nails, &c., &c., &c.

Foot of Bay St. - TORONTO

CHAMBERLIN METAL WEATHER STRIP

A permanent fixture, excludes draughts, dust and soot. Displaces storm sash, 50% cheaper

CHAMBERLIN METAL WEATHER STRIP CO. LIMITED
Phone Main 4319 310 Yonge St., TORONTO

SHINGLE STAINS FINEST IN THE MARKET

SAMPLES FOR THE ASKING

JAMES LANCMUIR & CO. Limited

1340-46 Bathurst Street, TORONTO

Dealers and Fixers of
English and American
Enamelled Tile

Glazed En. Tile

Ceramic and

Roman

Venetian

Marble

Mosaics

Mantels
in Faience
and Tile
Fireplaces

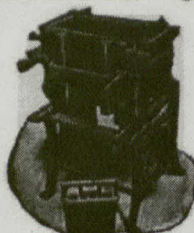
Phone 6136 Main

8 Albert Street
TORONTO

H.M. Robinson & Co.

Please mention CANADIAN ARCHITECT
AND BUILDER when correspond-
ing with Advertisers.

London Concrete Block Machines BEAT EVERYTHING IN COMPETITION



Face-down, adjustable, combined, many machines in one. All sizes of blocks made on the one size of pallet. The core is withdrawn vertically allowing the use of quite wet concrete, insuring a stronger block. Those new and important features are fully protected by patents.

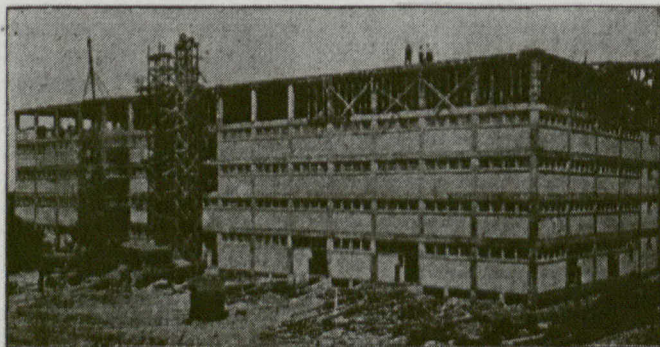
London Machines are known for their superiority throughout the Continent

If you are in the market for Concrete Machinery send for descriptive Catalogs of Face-down Block Machine, Brick Machine, Concrete Mixers, Sewer Tile Moulds, Drain Tile Machine, Bl and Lintel Moulds, Etc.

LONDON CONCRETE MACHINERY CO., 28 REDAN ST., LONDON, ONT.
Largest Exclusive Concrete Machinery Manufacturers in Canada.

KAHN SYSTEM OF REINFORCED CONCRETE

Every Building built by the KAHN SYSTEM is fireproof, enduring, and accumulates strength with age.



A TYPICAL EXAMPLE OF A KAHN BUILDING IN COURSE OF CONSTRUCTION.

BUILD KAHN SYSTEM—IT STANDS TO REASON.

The KAHN SYSTEM is a method of building based on organized engineering skill, experience and facilities for meeting every requirement of reinforced concrete construction in the most efficient and economical way.

Information Freely Furnished By

TRUSSED CONCRETE STEEL CO. OF CANADA

London, Eng.

23 JORDAN STREET
Toronto, Can.

DETROIT, MICH. LIMITED