

MINING SUPPLIES OF ALL KINDS

PICKS SHOVELS WIRE ROPE CHAIN
 DYNAMITE POWDER DETONATORS FUSE
BAR IRON STEEL DRILL STEEL IN LONG AND SHORT LENGTHS
 STEAM & COMPRESSED AIR HOSE HARDWARE
 PIPE VALVES FITTINGS ETC.

RICE LEWIS & SON
 LIMITED
 HARDWARE TORONTO

THE BUCYRUS COMPANY

SOUTH MILWAUKEE, WISCONSIN.

STEAM SHOVELS AND DREDGES.

PLACER MINING MACHINERY OF THE ELEVATOR BUCKET TYPE.

RAILROAD WRECKING CARS AND PILE DRIVERS.

CENTRIFUGAL DREDGING PUMPS.

For
 Miners
 Pit Sinkers

DYNAMITE AND EXPLOSIVES

For
 Quarrymen
 Contractors

... Manufacturers and Dealers in ...

ELECTRIC BLASTING APPARATUS, FUSE, CAPS, &c.

DAN'L SMITH,
 President
 C. A. MACPHERSON,
 Sec.-Treas.

ONTARIO POWDER CO. Limited

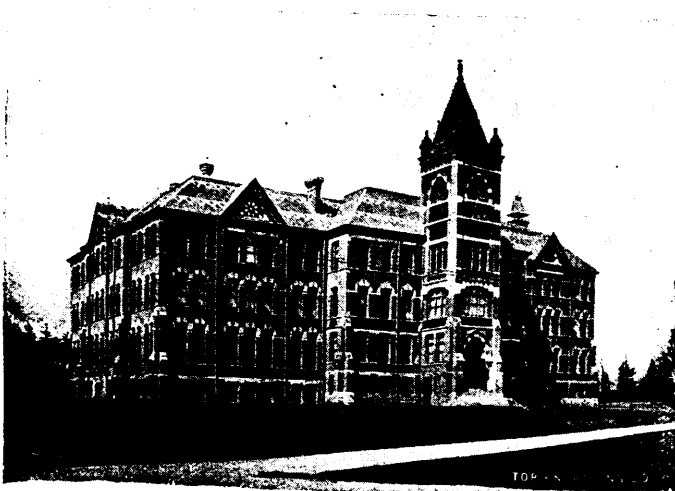
176 ONTARIO STREET

Kingston, Ont.

School of Practical Science, Toronto

ESTABLISHED 1878.

AFFILIATED TO THE UNIVERSITY OF TORONTO.



This School is equipped and supported entirely by the Province of Ontario and gives instruction in the following departments:

- 1—CIVIL ENGINEERING
- 2—MINING ENGINEERING
- 3—MECHANICAL & ELECTRICAL ENGINEERING
- 4—ARCHITECTURE
- 5—ANALYTICAL AND APPLIED CHEMISTRY

Special Attention is directed to the Facilities possessed by the School for giving Instruction in Mining Engineering. Practical Instruction is given in Drawing and Surveying, and in the following Laboratories:

- | | | |
|------------|----------------|--------------|
| 1—CHEMICAL | 3—MILLING | 6—ELECTRICAL |
| 2—ASSAYING | 4—STEAM | 7—TESTING |
| | 5—METROLOGICAL | |

The School also has good collections of Minerals, Rocks and Fossils. Special Students will be received as well as those taking regular courses.

FOR FULL INFORMATION SEE CALENDAR.

L. B. STEWART, Secretary.