

claims have been staked, an assay recently made from one of these giving \$22 in gold to the ton and 28 ounces silver.

In short, there is every reason to believe that in the Atlin Lake district another large precious mineral producing locality has been found which will further assist in bringing British Columbia into the first rank among



the mineral producing countries of the world—a position which she is gradually but steadily fitting herself to occupy. It is noteworthy that the Atlin Lake discoveries have already attracted the attention of outside capital.

### NEXT YEAR'S MINING EXHIBITION IN LONDON.

AN INTERVIEW WITH THE SECRETARY OF THE ORGANISING BODY.

(From Our Special Correspondent.)

**T**HINKING that British Columbians would like to know something of the plans of those responsible for the organisation of next year's Mining exhibition at Earl's Court, I called on Mr. E. Jerome Dyer, the Secretary of the Incorporated London Chamber of Mines—the body who has taken this matter in hand. I found Mr. Dyer already up to his eyes in work in connection with the preliminary negotiations—although the date fixed for the opening ceremony is nearly seven months ahead—but quite willing to afford me all the information at his disposal.

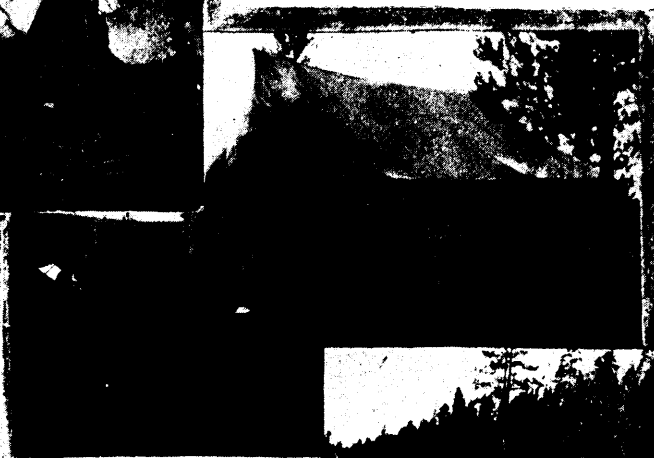
"Tell me," I said, "first of all, the exact part your Chamber takes in year's 'Greater Britain Exhibition'."

"With pleasure," he answered. "We are only too delighted to give the Press all the information we can, and, of course, the representative of the MINING RECORD of British Columbia is an especially welcome visitor in view

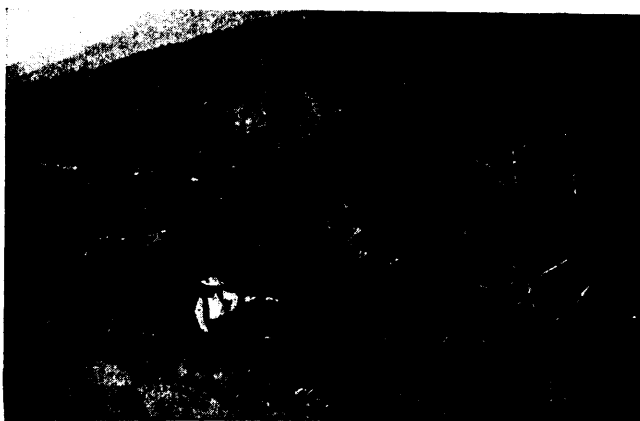
not only of the growing interest in that country, but also of the fact that the Council includes among its members so many gentlemen permanently identified with the Province. You must understand that those who projected the forthcoming Mining Exhibition had intended to hold it separately. The Council of the Incorporated London Chamber of Mines, however, arranged with the Earls Court authorities about three months ago to take over the entire control of the mining section of the Greater Britain Exhibition, and to embody in it the exhibition which they had themselves decided to hold in the metropolis of the Empire. Since this arrangement was made the following Colonies have applied for space: Queensland, Victoria, Western Australia and New South Wales, and we have every reason to believe that Canada, New Zealand, India and South Africa will also be well represented."

"I understand that mining machinery of every type will be accorded particular prominence?"

"Yes; the Council are determined to afford every facility for the exhibition of



1. A Cigar and Tobacco Store, Camp Discovery.
2. The Restaurant.
3. Recorder's Tents.



Pine Creek from Bluff behind Camp Discovery.

every description of implements and machinery in connection with mining. In proof of the representative character of this section it will be sufficient to mention the names of a few of the firms who have already booked space. For instance, among others, we have the Thames Mining Machinery Co.; Holman Brothers, of Camborne; Robey & Co., and Ruston, Proctor & Co., both of Lincoln; the Tacking Mill Foundry Co.; the Pulsometer Engineering Co., and many others equally representative have applied for space, and will, in the majority of cases,