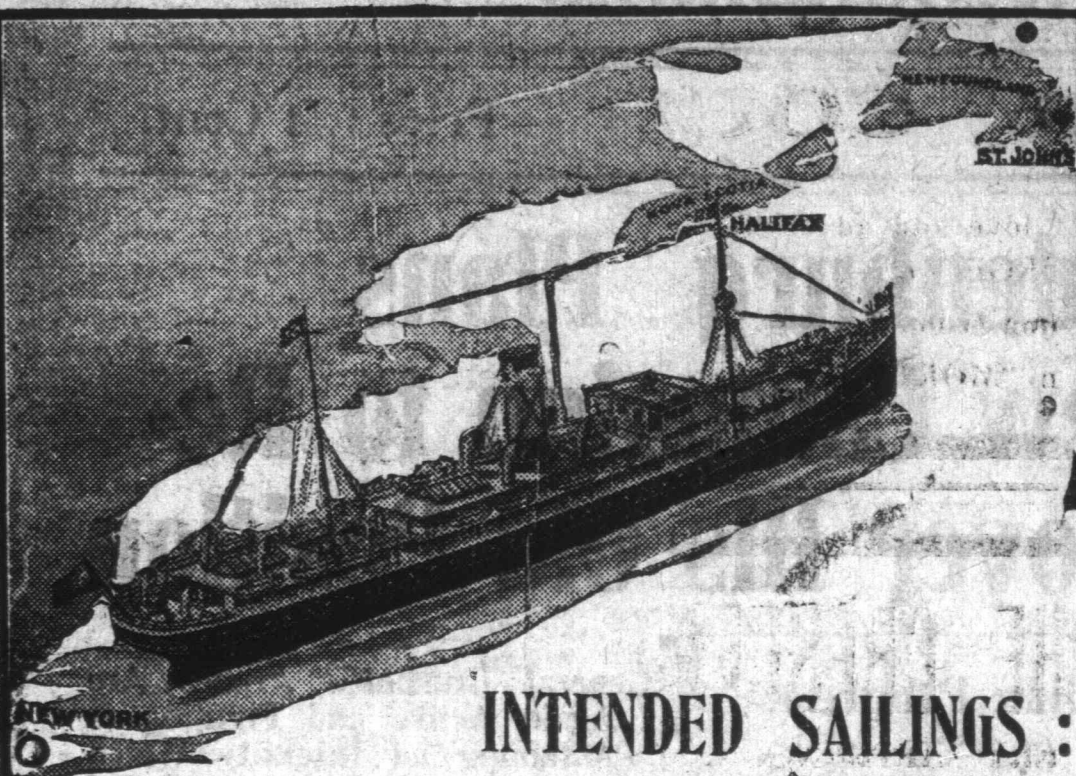


Red Cross Line



INTENDED SAILINGS:

S.S. STEPHANO and S.S. FLORIZEL.
FROM ST. JOHN'S
FLORIZEL, Sept. 26th.
STEPHANO, Oct. 7th.
FLORIZEL, Oct. 17th.
STEPHANO, Oct. 28th.

FROM NEW YORK
STEPHANO, Sept. 27th.
FLORIZEL, Oct. 7th.
STEPHANO, Oct. 18th.
FLORIZEL, Oct. 28th.

Harvey & Co., Limited
Agents.

"From Sill to Saddle"

All kinds of
Building Material
as well as
Lumber
sent to all parts of the Country.

HORWOOD LUMBER CO., LTD.

CHISLETT'S MARBLE WORKS

(Opp. Baine Johnston's, Water Street).
P. O. Box 86.

If you want a Headstone or Monument visit our store and inspect our stock. We have the most up-to-date finished work in the City. Write for DESIGN BOOKS and actual PHOTOS of our work. PRICES to suit everybody. FIRST CLASS SOCKET given free with each Headstone. Outport orders especially attended to. LOCAL CEMETERY work done cheaply.

BRITISH

THE POWER OF PROTECTION
Buying a BRITISH SUIT Means
PROTECTION from High Prices

PROTECTION in Material.
PROTECTION in Style.
PROTECTION in Fit.

Every Man and Boy Needs
PROTECTION
Have It!

The British Clothing Co., Ltd.,
Sinnott's Building
Duckworth Street, St. John's.

Dirty Soda Fountains are Spreading Disease and Death

Soda Fountains that Fail to Sterilize Their Glasses and Safeguard Their Patrons in Other Ways Which Health and Common Decency Demand are Continually Passing Deadly Germs From Mouth to Mouth—They are Often, Science Believes, One of the Chief Causes of Epidemics of Infantile Paralysis, Diphtheria, Typhoid Fever, Whooping Cough and Other Diseases

A man walked into the office of Dr. J. Morton Howell, a well-known physician of Dayton, Ohio, the other day and complained of a severe sore throat.

The doctor made an examination and found him suffering from a serious infectious disease. As a result of its ravages his throat was highly inflamed and so reeking with germs that he was almost certain to infect whatever his lips touched. After treating the man's throat with an antiseptic solution the physician gave him a prescription for medicines to be taken internally and warned him to be careful not to kiss his wife and children or to let them eat or drink from utensils he had used.

That same afternoon Dr. Howell chanced to enter a drug store. There, standing at the soda counter, he saw this patient of his enjoying a long, cool drink.

Dr. Howell's curiosity was aroused. He lingered to see just what would happen to the glass that was being brought into contact with those germ-laden lips. And this is what he saw.

A young man in a soiled linen coat, with dirty hands and nails, poorly kept, reached for the glass as soon as it was empty.

He dipped it hurriedly in a tub of cold water that was thick and discolored from the rising of hundreds of other glasses.

A careless wipe with a towel that was damp and far from clean was the next step in the "cleansing" of the glass.

Then, picking up the glass in such a way that his moist, dirty fingers touched its inner and outer edge just where one's lips do the clerk placed it on the counter to await the next customer.

All this was entirely inadequate to remove the danger of disease, and the glass remained as capable of spreading infection as it had been when it left the lips of the man with the sore throat. In fact, its cargo of disease germs had probably been considerably increased by contact with the soda clerk's dirty hands the dirty towel and the risings of many other glasses.

The Deadly Menace Of It.
Multiply instances like this hundreds of times daily, and you have a faint idea of the deadly menace which exists in every soda fountain when not conducted along sanitary lines.

Not only can the serious disease from which the man with the sore throat was suffering be spread in this way, but infantile paralysis, tuberculosis, typhoid fever, whooping cough and many other diseases can be thus passed on from one person to another until an epidemic is raging.

Dr. Howell was so much impressed with what he had seen that, thru his official position as a member of the Ohio state board of health, he promptly took steps to compel the proprietors of soda fountains and ice cream parlors to cleanse and sterilize their glasses, spoons and other utensils and to take other precautions which will put a stop to the spreading of disease and death. The result of the crusade which he inaugurated has been to make the state of Ohio the leader in a nation-wide movement to make soda fountains clean, sanitary and safe for the public to patronize.

The very stringent regulations adopted by the Ohio state board of health require the sterilization of all glasses, ice cream dippers, spoons, serving dishes or anything else that comes in contact with ice cream, soda water or sundries. Merely washing and wiping are not sufficient—all utensils must be sterilized either with boiling water or by steam.

The articles must first be rinsed in cold water, then thoroughly washed in hot water with soap or cleaning powder, then exposed to live steam or boiling water from three to five minutes, and finally rinsed in cold, clean water and wiped with a clean, dry towel. This must be done with every utensil used in connection with the public sale of ice cream, soda water and similar foods and beverages before it can be used again. Suitable provision must also be made for taking care of the sterile utensils so that they will be kept clean and free from germs until used.

Paper Cups and Spoons.
If it is impossible to make arrangements for live steam or boiling water, then paper cups and individual spoons must be used, these being destroyed as soon as they have done service for one person. The regulations also provide that refrigerators must

be kept clean and free from infection, and that all persons connected either with the manufacture or sale of ice cream, soda water, and so forth, must be cleanly in person and dress and free from any communicable disease. The use of straws is positively forbidden unless they are carefully protected from the dust, dirt and disease germs which may gather on them through exposure to the air or careless handling by employees.

But, some one may ask, why should soda fountains and ice cream parlors be singled out for such rigid supervision? Don't the same, or even greater, dangers of disease exist in every hotel, restaurant and dining

cad? One reason why the soda fountain is a greater menace than other public eating and drinking places is that many of the things it sells are the best possible cultures in which to breed populous colonies of vigorous disease germs.

Another reason is that in hotels, restaurants and dining cars boiling water and soap and water are liberally used in the washing of glasses and dishes. Until recently it was a rare thing to find a soda water fountain that had a supply of hot water or steam for the cleansing of its glasses, spoons and other utensils.

Investigation made in many Ohio cities showed that the soda fountain's greatest danger as a spreader of disease lay in its lack of clean, hot water. Until the board of health began to teach the importance of more sanitary methods glasses and spoons, once used, were thrown into a basin of cold and foul water and considered ready for use again without any further attention.

For some reason, which it is hard to understand, even less care was taken in many instances with ice cream dishes.

SHOE RIVETS!

IRON.
WASHED BRASS.
SOLID BRASS.
OZ. TACKS—all sizes.

LANTERNS!

COLD BLAST—Tin.
COLD BLAST—Galvanized.

Axe Handles!

Boys', 2 lbs.
Men's 32 in. handle, 3 lbs.
Men's 36 in. handle, 3 1/4 to 4 1/4 lbs.

Wood Cart Hames!

With and without brass tops.

Carriage Harness!

Fitted with Tugs for traces, Japanese, Nickel and Brass tipped, all-over Nickel and Brass.

Harness!

We manufacture Carriage, Cart and Slide Harness.

NEYLE'S HARDWARE.

HOT WEATHER PHILOSOPHY.

IN this hot weather it will make us feel a little more comfortable to think of cool things, like snow and ice. So, first let us remember that there is a wet season ahead, and after that the snowy and frosty season. We shall have to be out in all kinds of weather, and the only way to enjoy life under the different conditions is to be comfortably clad. For instance, if your feet are encased in nice, stylish, well-fitting Bear Brand Rubber Shoes, the state of the streets will not worry you in the slightest degree. Of course, nobody is buying rubber shoes just yet, but the time will soon come, and then, isn't it better to buy one good, well-fitting pair that will last you the greatest part of the winter, rather than a half-dozen pairs of shoddy shoes, that you will always find broken on the mornings that the slush is inches high?

Cleveland Rubber Co.,
New Martin Building, St. John's, 21w,1f

Microscopic examination of carefully washed glasses reveals enough deadly germs to infect a whole community, and proves beyond doubt that only the strictest cleanliness and the most careful sanitary precautions can make a soda fountain a safe place for you and your children to patronize. Unless the glasses are sterilized with steam or boiling water, unless the straws and other utensils are protected from dust and dirt, and unless the men and women who serve you are clean and healthy, death is bound to be constantly in attendance at the soda fountain, and the flavors served will include the germs of tuberculosis, typhoid fever, whooping cough, infantile paralysis, diphtheria, and many other diseases.

Public Drinking Cups Abolished.

The public drinking cup was found guilty of causing so many epidemics that it was long ago abolished in nearly every state. But until recently little or nothing has been done to curb the dangerous tendencies of the soda water glass, which has even greater possibilities for evil than the common cup. A soda glass may be used by as many different persons, and the nature of the mixtures it contains makes it a much more favorable breeding place for germs than a cup used only for water.

An examination under microscope of one carelessly washed soda water glass revealed in the thick coating of filth which covered it both inside and outside more than 20,000 decaying human cells and bits of dead skin. Clinging to a single one of these cells there were counted 150 disease germs. The total germ population of the glass was estimated at 3,000,000, representing a dozen serious diseases.

Dr. Tanza of the United States public health service believes that the dirty soda fountain has a great deal to answer for in connection with the spread of tuberculosis. He has frequently seen men and women in the advanced stages of consumption drinking at soda fountains where no effort was made to cleanse the glasses and other utensils beyond a hurried rinsing in standing water.

Children are most seriously menaced by the dirty fountain because they are so fond of soda water and ice cream and because their powers of resistance to disease are not yet well developed. Science is sure that there is no more certain way of exposing boys and girls to a wide variety of serious diseases than by letting them spend their nickels at soda fountains which fail to sterilize their glasses and take other sanitary precautions.

In the attempt to abolish the dirty soda fountain it is not sufficient to insist merely upon the equipment necessary to give sanitary service. The best equipped fountains are often the most unsanitary, on account of the indolence and ignorance of their employees. What seems to be needed are straight regulations for safeguarding the health of patrons of soda fountains in every possible way, with severe penalties to the proprietors as well as to the clerks for neglect.

Some Rules to Observe
In addition to the sterilizing of glasses, spoons, etc., here are some of the conditions which every fountain should be required to meet:

Separate towels for drying glassware and for wiping counters and hands.

Soda dispensers to be persons of good health and cleanly habits, dressed in fresh, clean linen and with closely manicured nails.

The tops of glasses never to be touched when serving and the hand never put inside a glass when taking from the counter.

All clean utensils and all supplies to be kept carefully covered.

Good ventilation and fly screens. Fountain to be thoroughly cleaned every night and all refuse emptied at least once a day.

In St. Joseph, Missouri, and in the state of Florida the health officials are not satisfied with sterilization with steam or boiling water, but require the use of chlorinated lime. This kills all microbes and insures a chemically pure glass, dish or spoon.

It is too early yet to say definitely how much improvement in the public health may be expected to follow the cleaning up of the dirty soda fountains. James E. Bauman, assistant secretary of the Ohio health board, however, is already convinced that the fewest cases of communicable disease and the lowest death rate will be found in cities having the most sanitary soda fountains.

The well conducted soda fountain, one that deals in pure, wholesome materials and serves them in a clean, sanitary way, is an institution science believes should be encouraged. It not only promotes practical temperance, but contributes in no little degree to the comfort and pleasure of large numbers of people of every class. To allow anything so useful and pleasurable to jeopardize our health and lives is not to be thought of.

By educating the public to the importance of sanitary conditions it is hoped to hasten the day when no owners of a soda fountain can hope to attract patronage unless he maintains a high degree of cleanliness.

Rugs and Carpets!

We announce the arrival of a new consignment of Wilton, Axminster and Tapestry Carpets, with Rugs to match.

These Carpets are remarkable for the rare beauty of their designs, and the exquisite softness of the color tones.

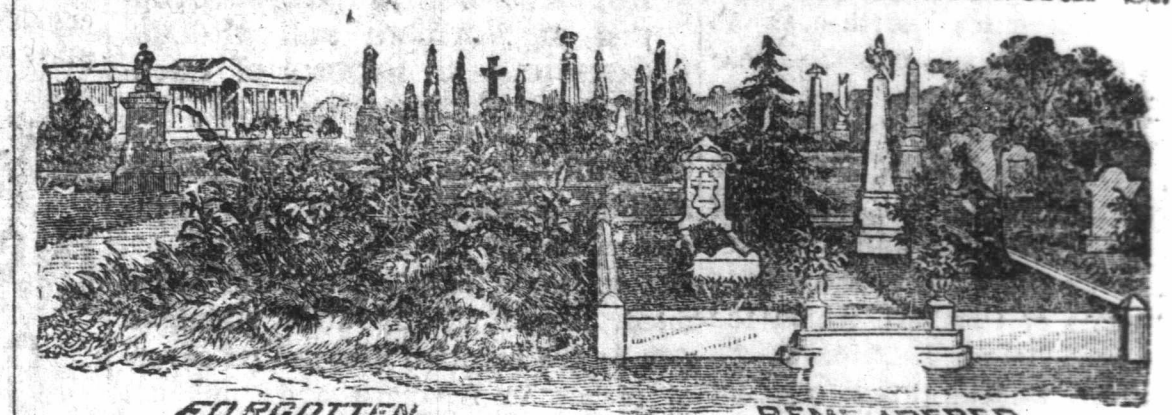
Sizes and prices quoted on application.

U. S. PICTURE & PORTRAIT CO.
CARPET DEPT.

SKINNER'S MONUMENTAL WORKS

Established 1871—and still growing stronger

St. John's, N.F. - - - 329 & 333 Duckworth St.



MONUMENTS and HEADSTONES

Our new catalogue of Photo Designs, now ready for Outport customers. Thousands have testified their satisfaction with our Mail Order system of buying Headstone and Monuments.

N.B.—None but genuine Frost Proof Tested Stone Sockets supplied with all orders; refuse imitations now in the market. Give us a trial order and get the best there is. Price List sent to any address on receipt of postal.

To My Outport Friends:

As the Fall is now approaching, you will, no doubt, be thinking of coming to St. John's to purchase a supply of clothing for yourself and the boys. Our purpose in writing this is two-fold: we want to make a fair profit on the Goods we sell you, and also to give you the best possible value for your money. We offer you **GOOD VALUE FOR GOOD MONEY.** We have no **TWO PRICES**, and guarantee all a square deal. Anyhow, drop in and see our clothing when in the city, and if not satisfied with the Prices and the Goods, you need not buy.

With best regards, I am,
Yours truly,

T. J. BARRON

BOYS' AND MEN'S OUTFITTER,
358 Water Street, St. John's, Nfld
One door west of Post Office

The Fishermen of Newfoundland

have helped to build up the largest Ready Made Clothing business in the Colony.

BECAUSE

they know where to find value.

They

compel their suppliers to stock our goods because the store Must Cater to the Customer.

Our well known brands are: Americus, Fitreform, Truefit, Stylenfit, Progress.

WHOLESALE ONLY.

Newfoundland Clothing Co Limited.

