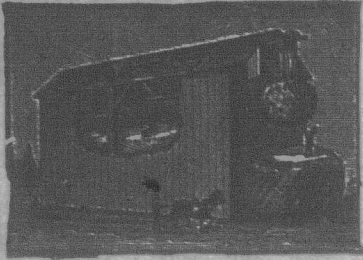
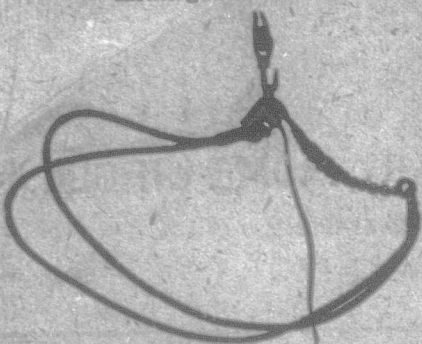


BUCHANAN'S
(Malleable Improved)
PITCHING MACHINE
For unloading hay and all kinds of loose grain.



Unloads on either side of barn floor without changing car. No climbing necessary. Malleable Iron Cars. Steel Forks. Knot Passing Pulleys. Will work on stacks as well as in barns. Satisfaction guaranteed.



The Common-Sense Sheaf-Lifter
Works in connection with Pitching Machine, and is the most complete apparatus ever offered to the public for pitching sheaves. Sheaves left in the mow just as they come from the load.

RESPONSIBLE AGENTS WANTED
Circulars, Prices and Terms on application to
M. T. BUCHANAN & CO., Ingersoll, Can.

The New Century
American Cream Separator



Never fails to give increased profits to users.
It is absolutely clean.
Combines best methods with lowest cost.
Thousands are using them and are satisfied.
Investigate their advantages.

Write for our catalogue.

C. RICHARDSON & CO.,
P. O. Box 1048. ST. MARY'S, ONT.

WHY RUPTURED?

You can be Cured at Home, Without Pain, Danger and No Loss of Time from Work. No Case too Bad or of too Long Standing.



MR. JOHN MORRIS, Niagara St., St. Catharines, Ont., is cured of a dangerous rupture and lost no time from work. A Valuable Book, telling how all ruptures can be cured and a **Free Trial Method** sent sealed post-paid, free of all cost to all sufferers. Write at once; correspondence confidential. DR. W. S. RICE, 2 Queen St. East, Dept. (271), Toronto, Ont.

FARMING PAYS
IN NEW ONTARIO.

Write for descriptive pamphlet and maps

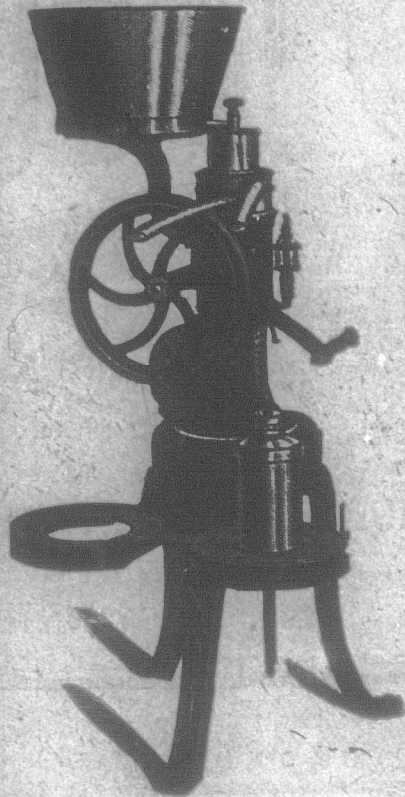
ALGOMA, THUNDER BAY,
RAINY RIVER,
NIPISSING, TEMISKAMING,

to

HON. E. J. DAVIS,
Commissioner of Crown Lands, TORONTO

The National

Stands First.



This is no vain boast. Others may claim this place, but the National Cream Separator soon proves its superiority when brought into competition with them.

The National is as represented. The closeness of its skimming has not to be sacrificed to keep up its advertised capacity.

It makes smooth cream, which is easy to churn.

It turns easily, is quickly cleaned, having so few parts, and these easily adjusted.

Its milk tank is conveniently low, and its gearing enclosed. Send for terms to

The Creamery Supply Co., Guelph, Ont.,
The T. C. Rogers Co., Guelph, Ont.,
Jos. A. Merrick, Winnipeg, Man.,
H. E. Nunn, Truro, N. S.,

CAPACITY:
Style B—250 lbs. per hour.
Style No. 1—330 to 350 lbs. per hour.
Style No. 1 A—450 to 500 lbs. per hour.

or to the manufacturers,

The Raymond Mfg. Co. of Guelph
GUELPH, ONTARIO. Limited.

Binder Twine

BLUE RIBBON,	650 feet per pound
RED CAP,	600 " " "
TIGER,	550 " " "
GOLDEN CROWN,	500 " " "
STANDARD,	500 " " "
SISAL,	500 " " "

Blue Ribbon is no doubt the Queen of Binder Twine. It runs six hundred and fifty feet to the pound, and is manufactured from most select Manila Fibre. Six hundred and fifty foot Twine is the only Twine manufactured entirely from Manila Fibre. Dealers should beware of so-called "Manila" Twines which are advertised to measure less than 650 feet to the pound. They are mixed Twines. Write for Samples.

CONSUMERS' CORDAGE COMPANY, LIMITED

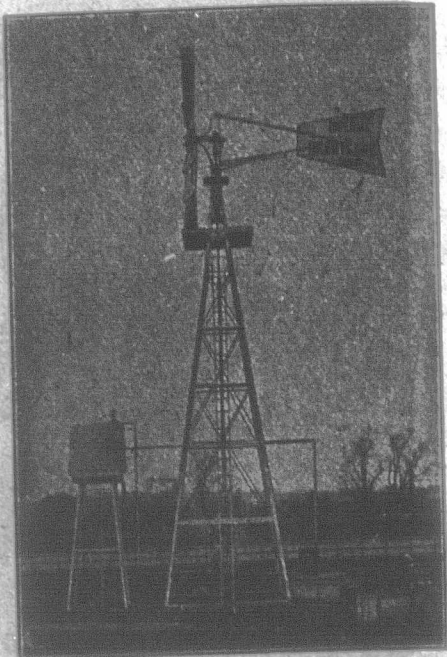
HALIFAX, N. S.

MONTREAL, QUE.



20 H.-P.
Total
Weight
3,200 lbs.

Patented and Pending. Our **Gasoline Threshing Engine.** Write for prices, etc., to
The McLachlan Gasoline Engine Co., Ltd., 201 Queen St. E., Toronto,
or to **W. C. WILCOX & CO.,** Winnipeg, agents for Manitoba and Northwest.



CUT OF
"IMPERIAL" PUMPING WINDMILL
Outfit which won the CHAMPIONSHIP OF THE WORLD against 21 American, British and Canadian manufacturers, after a two months' thorough trial. Made by
GOULD, SHAPLEY & HUIR CO., Limited,
Brantford, Canada.

Keep in the Front.

To do it you must have the best, and the BEST WINDMILLS are the

Woodstock Steel Mills

when fitted with GRAPHITE BEARINGS. They run without oil, no more CLIMBING TOWERS TO OIL BEARINGS.

Grinders, Pumps, Tanks and Saw Benches.

WOODSTOCK WIND-MOTOR CO'Y,
LIMITED,
WOODSTOCK, ONT.

WHEN YOU BUILD OR REPAIR

We can help you to do it cheaply and permanently with our Sheet Metal building materials. They are ornamental, durable, lightning and fire proof. Write us about your plans and ask for our free catalogue.

The Metal Shingle & Siding Co., Limited
PILTON, ONT.

EXCELSIOR LIFE INSURANCE COMPANY.

HEAD OFFICE, - TORONTO.
ASSETS, ONE MILLION DOLLARS
Insurance in force over - \$6,000,000
A Company with an unparalleled low death rate, low expense rate, and earning over 6 per cent. on assets, is a desirable Company to insure in and a good Company to represent. Agents wanted. Liberal contracts offered good producers.
E. MARSHALL, Sec. D. FASKEN, Pres.



BUCK SALT for horses and cattle, in ten and one ton lots. Toronto Salt Works, Toronto.

Ten Days Free Trial

allowed on all our bicycles. We SHIP ON APPROVAL without a cent deposit; any wheel not satisfactory returned at our expense.
Highest grade **\$8.75 to \$17**
1904 Models
Coaster Brakes, Hedgerhorne Puncture proof Tires and best equipment.
1903 & 1902 Models, best makes **\$7 to \$12**
500 Second-hand Wheels
All makes & Models **\$3 to \$8**
good as new
Great Factory Clearing Sale at half Factory Cost.
RIDER AGENTS WANTED
in each town to take orders from sample wheel furnished by us. Our agents make big profits. Write at once for catalogue and our Special Offer.
AUTOMOBILES, TIRES, Sewing Machines, Sundries, etc., half usual prices.
MEAD CYCLE CO., Dept. 254D Chicago