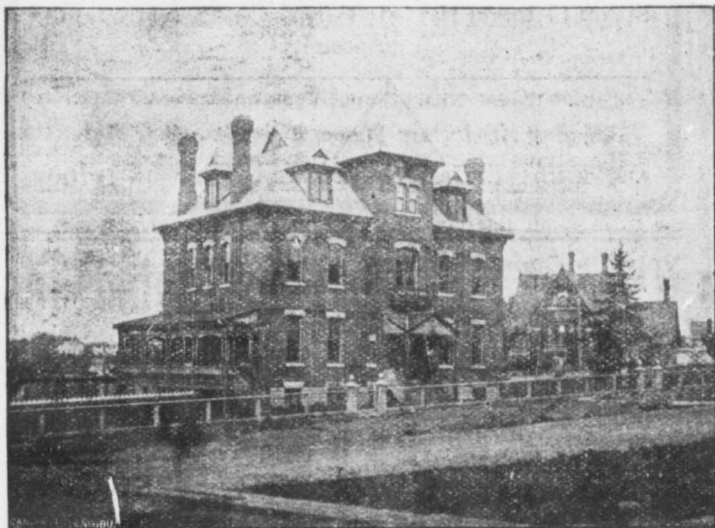


get up, and that the beds are decently adjusted. Sponge the sick person's face and hands, to refresh him, and, if Extreme Unction is to be administered, see also that the feet are clean, and the stockings removed. Provide a small table, covered with a clean cloth. Set upon it a Crucifix, with a candle at each side. Also a wineglass, or other small vessel (not a basin nor a deep tumbler), containing a little clean water, and another vessel with holy water. Lay a clean white cloth or napkin on the breast of the communicant. Place the table towards the foot of the bed, on the patient's right hand in such a position that it will not be in the priest's way when giving Holy Communion or Extreme Unction, and that the sick person may be able to see Our Lord on the Cross.

---



ST. JOSEPH'S CONVENT, BARRIE.

---

The Congregation of the Sisters of St. Joseph was founded at Lyons, France, in 1650. A colony of Six Sisters came to St. Louis, Mo., in 1836, and in October, 1851, the Sisters first arrived in Toronto. The year 1901 witnessed the celebration of their golden jubilee. In 1858 a mission was opened in Barrie—four Sisters, of whom two taught in the Separate School, coming at that time. The present Convent was built in 1886. There are now four Sisters engaged in teaching the Separate School. Instruction in music, vocal and instrumental, is given at the Convent.