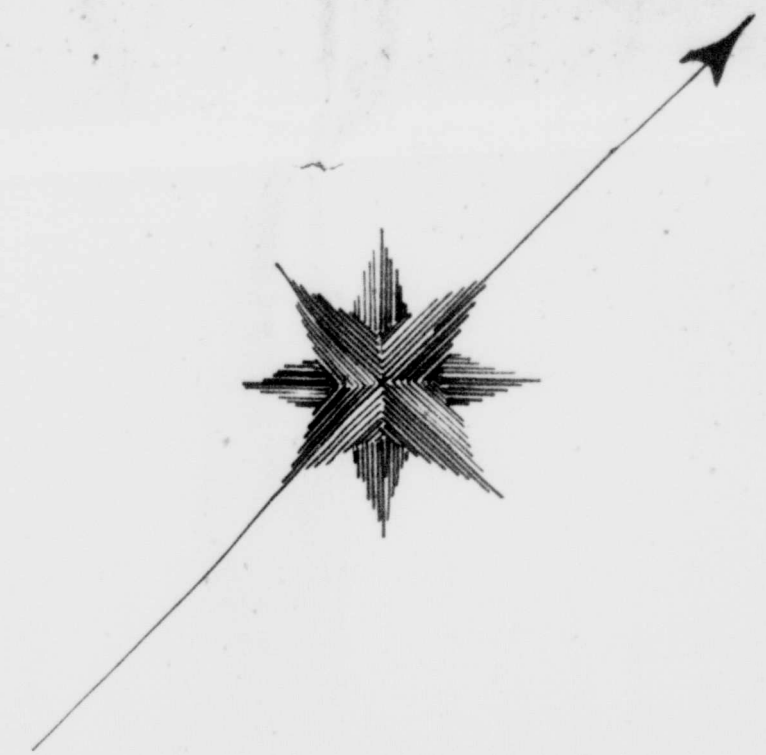


# Plan OF INDIAN RESERVE IN THE TOWNSHIP OF CARADOC

Scale, 20 Chains = 1 inch

Surveyed by James Robertson O.L.S. Sept. 1908

REPRISE - RETAKE

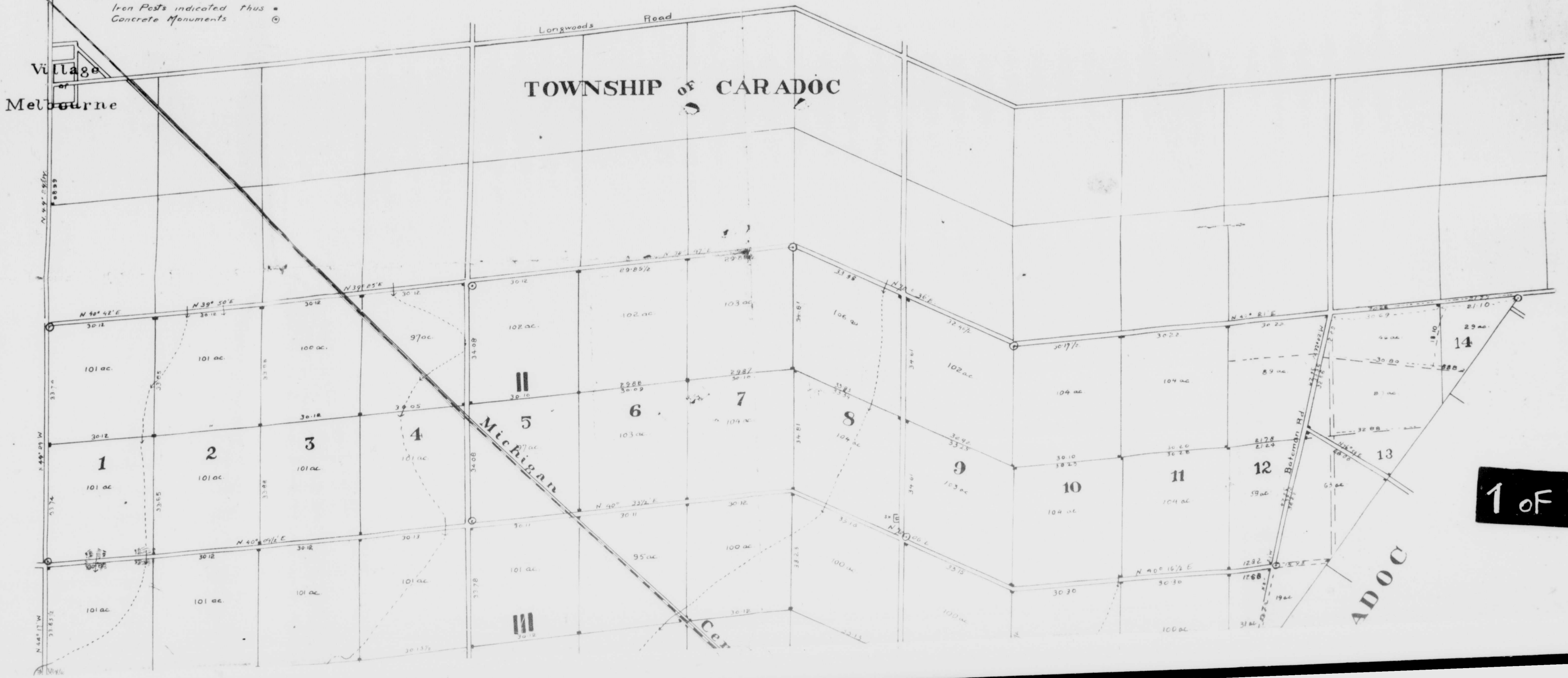


1/4 To Courtland

Note -  
Iron Posts indicated thus \*  
Concrete Monuments ©

Village  
of  
Melbourne

TOWNSHIP OF CARADOC



1 of

ADOC