

## Campaign spending limits eyed

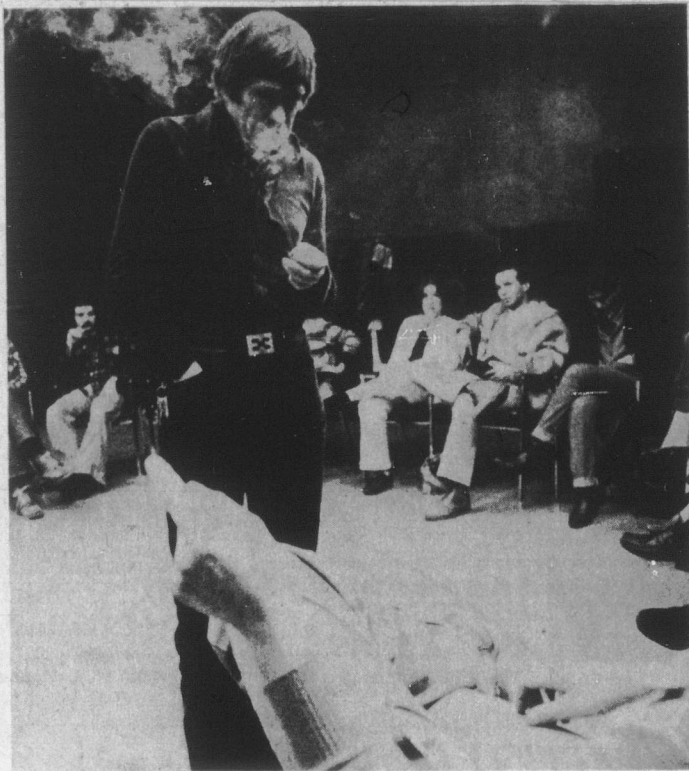
City council is going to consider taking a position on maximum expenditures for municipal-election campaigns.

At a general committee meeting this week, it was decided to defer a motion by Councillor Frank McKechnie calling for "appropriate" limitations on spending in campaigns for the mayor's job and council positions.

Councillor Hazel McCallion said that the matter should be deferred and councillors should consider a Private Member's Bill presented by Michael Cassidy (NDP Ottawa Centre) before taking a position.

The bill proposes that in major cities such as Mississauga a maximum of \$3,000 be spent in ward council races and a maximum of \$0,000 for the mayor's campaign.

Each candidate would also be required to file a full statement of campaign expenses, revenue and contributions. The amount of money spent in the last election became an important issue. Mayorality candidate Gerry Townsend spent at least \$45,000. Two others, including Mayor Ron Searle, spent over \$20,000.



Times photo

## Director's workshop

Robert Buck conducted a director's workshop for members of the Mississauga Players last week. The workshop is one of four he is conducting under a provincial grant. The Mississauga

Players will be presenting The Glass Menagerie, which Buck will direct, at Huron Park Community Centre on Feb. 17-19 and 24-26.

## Ex-town hall suggested for community centre

It's unfortunate that Peel Regional Police are occupying the former Streetsville town hall because it could be used as a community centre, says Streetsville Councillor Hazel McCallion.

Mrs. McCallion was commenting this week at a general committee meeting on a proposal for a seniors' drop-in centre in her ward. A site at William and Ontario Streets is being considered for purchase for the centre. The funds for the land may be included in this year's budget.

The seniors' activities have outgrown the old library site, noted Mrs. McCallion, adding that it was unfortunate that the community is "being

deprived because the 12 Division headquarters is located in the former town hall." "Port Credit wisely kept its community hall, but we were more generous in Streetsville," the Ward 9 councillor and former town mayor said.

The region now pays the city \$11,000 rent for the building. However, the money is really a bookkeeping item because Mississauga contributes 70 per cent of all the regional expenditures.

When Mayor Ron Searle said it was unfair for Mrs. McCallion to suggest the police were inhibiting the use of the building for senior citizens, Mrs. McCallion said

she was not blaming the police department.

"But the building was supposed to be rented for two years only, according to the agreement made in 1974," she said. She added that former Mayor Martin Dobkin had been very reluctant to rent the building to the police, but she had supported the move in sympathy with the fact that the force had no headquarters' site in Streetsville.

"It is a community hall and if it were available, the seniors could be using it," concluded the councillor.

## Man faces charge after baby beaten

A Mississauga man has been charged after a 15-month-old baby was beaten in a Paisley Boulevard apartment, according to police.

A police spokesman said that the child's mother, Debra Hare of 70 Paisley Blvd. W., left her son Chris in the care of a 19-year-old man when she went out Saturday night.

Police say that on Sunday morning the man woke up in an "uncontrollable rage" and went into the child's room, where he struck the baby several times.

The child suffered a large bruise to the chest and several

bruises to other parts of the body. He was taken to Mississauga Hospital for observation and later released. The mother called police.

Charged with assault causing bodily harm is James Zapref of 2274 Medhat Dr. He was held in custody to await a bail hearing.

**WHO ARE THE PIERCES**  
See Page A13

FAST SERVICE **Braddock optical Co.**

303 Lakeshore Rd. E., Port Credit **278-6961**

- Fast One Day Service On Most Lenses (Some Cases Within Hours)
- Latest Styles
- Broken Lenses Duplicated (Prescription Taken From Pieces)
- Broken Frames Replaced (Usually While You Wait)
- Sunglasses made to your prescription

**A. Everatt Optician**  
May We Arrange An Eye Examination For You?

## ANNUAL WINTER SALE NOW ON!

UP TO **30% OFF** ... LADIES' QUALITY FOOTWEAR (AA's & B WIDTHS)  
UP TO **25% OFF** ... MEN'S QUALITY FOOTWEAR  
UP TO **30% OFF** ... MEN'S & LADIES' APRES SKI FOOTWEAR

Jan. 3rd-31st  
Mon.-Fri. 10 a.m.-7 p.m., Sat. 10 a.m.-5 p.m.

**Graham Shoes**

655 DIXON RD. (SKYLINE HOTEL) 241-4500

## Double-deck GO cars expected by fall

Double-decker coaches capable of increasing GO transit service by 75 per cent during rush hour are expected to be put in operation on the lakeshore line this fall, a spokesman for the Ontario Ministry of Transportation and Communications says.

Eighty double-decker cars are being built by Hawker Siddeley Canada Ltd. of Thunder Bay at a cost of \$38 million, the spokesman said.

The double-decker coaches will seat 162 passengers. The single-level coaches used by GO Transit accommodate 94 passengers.

Delivery of the 80 double-

decker coaches is expected to take one year.

GO Transit has recently experienced a dramatic increase in demand for commuter service along the lakeshore line, according to GO Transit spokesman Tom Henry.

The lakeshore line has been experiencing a 15 per cent increase in passenger service per annum over the last two years, Henry says.

In the first eight years of the system, passenger service has been increasing at a rate of six per cent a year, he says.

Approximately 26,000 passengers use the lakeshore line each day, Henry says.

**FORESTS... PART OF ALL OUR LIVES!**  
NOW... AND IN THE FUTURE



## WHY NOT BANK CLOSE TO HOME?

At the Provincial Bank of Canada, we're friendly. Knowledgeable. We offer you the full range of banking services. Best of all, we're conveniently located, right in your area. So, think of us as the bank next door. And come on in, neighbor!



the provincial bank of canada

# FOLIAGE PLANT AND PLANTER SALE

## 1/3 TO 1/2 OFF

<p><b>FALSE ARALIA</b> 44"-48" High in 10" container. Reg. Price \$30.00 now <b>\$15.00</b> Delicate Lacey Foliage</p>	<p><b>SCHEFFLERA</b> 24"-30" tall in 6" container. Reg. \$8.95 now <b>\$4.50</b> Multi stemmed — bushy plant</p>	<p><b>DRACAENA MARGINATA</b> 36"-42" tall, 3 stem — well shaped plant. Red Margined Leaves. Reg. \$36.95 now <b>\$18.50</b></p>
<p><b>HANGER PLANTER</b> Attractive soft green finish with daisy floral motif. Illustrated 3" dia. x 4" high approx. Reg. \$1.49 now <b>75¢</b> Other sizes and styles all at half price</p>	<p><b>PLANTER ENCRUSTED WITH SEASHELLS</b> Different colours. 4" high x 3 1/2" dia. Reg. \$6.49 now <b>\$3.25</b></p>	<p><b>PLANTER BOWL</b> White Ceramic with ceramic rope tie. 10" high x 9" dia. approx. Reg. \$11.99 now <b>\$6.50</b> Other sizes larger and smaller all at half price.</p>
<p><b>OWL PLANTER</b> Ceramic hanging planter with hanger. Open and white. 4" high x 3 1/2" dia. Reg. \$1.99 now <b>99¢</b></p>	<p><b>PLANTER JARDINIERE</b> High quality "Imperial Original" Stoneware, 6" wide x 7" high approx. Reg. \$12.59 now <b>\$6.25</b> Available in smaller and larger sizes all at half price in shades of Blue and Brown</p>	<p><b>PLANTER BOWL</b> Biscuit shade, textured ceramic, highlighted in warm brown. 10" dia. x 4 1/2" high approx. Reg. \$9.99 now <b>\$6.66</b> Other sizes, same style, equally reduced.</p>

## PLANT WORLD

Come—see our indoor park—of lovely growing things—delight the senses—with sound of bubbling fountains—the smell of earth and plants—why not spend part of your day at Plant World.  
Business Hours—Mon. thru Sat. 9:00 AM - 5:00 PM  
Open Sunday 10:00 AM - 5:00 PM

PHONE 241-9175

**4000 EGLINTON WEST**

Between Royal York & Scarlett Roads — Eglinton Buses stop at our door.

# meats

## IN PERFECT TRIM

WE FEATURE ONLY RED BRAND BEEF

**SMOKED COTTAGE ROLLS**  
**69¢ lb.**

**ENGLISH CUT BEEF ROAST** **99¢ lb.**

**PICKLED BRISKET POINT** **89¢ lb.**

**SWIFT'S LAZY MAPLE BACON** **\$1.19 lb.**

**SWIFT'S WIENERS** **69¢ lb.**

We Sell Only Government Inspected Meats

**GROUND CHUCK**  
3 LB and over **53¢ lb.**

**SWIFT'S BONELESS DINNER HAMS** **\$1.49 lb.**

**FREEZER ORDERS CUT WHILE-YOU-WAIT and at EVEN BETTER PRICES**

## STORE HOURS

TUES., WED., & THURS. 8 am - 6 pm

FRIDAY 8 am - 9 pm

SATURDAY 8 am - 6 pm • CLOSED MONDAY

# LESLIE'S MEATS

One Location Only - Long Branch

**3553 Lakeshore Blvd. W. 255-8388**

Next to Loblaws 6 Blocks E of 27 Hwy.

WE RESERVE THE RIGHT TO LIMIT QUANTITIES