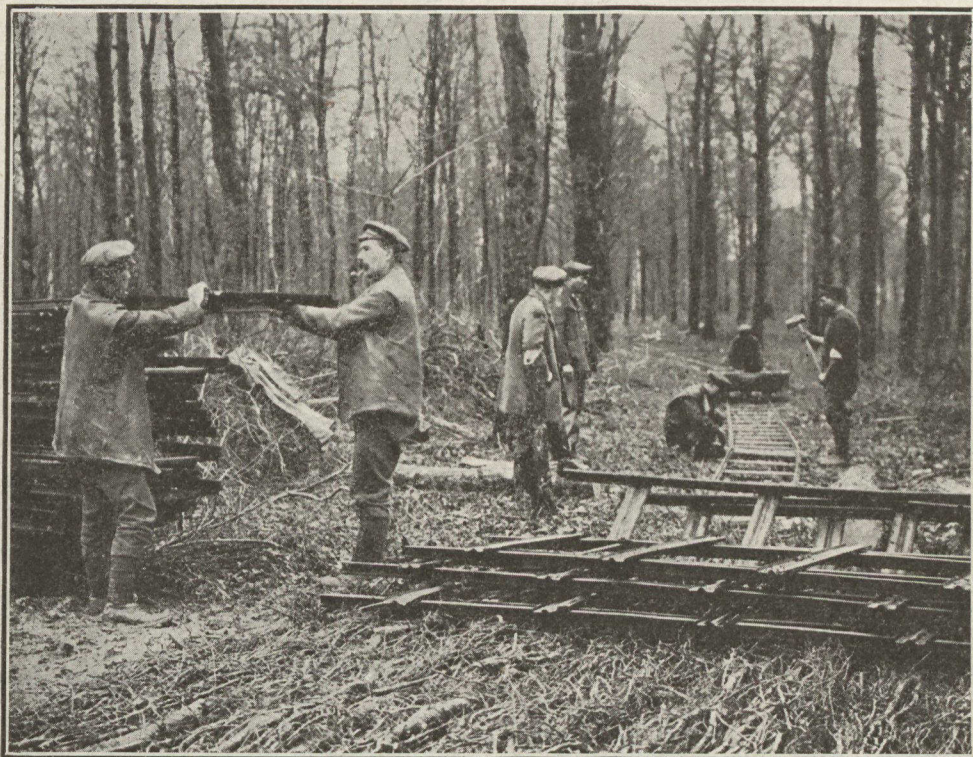


Getting Logs to the Mill at the "Front"



(British Official Photograph)

LAYING A LIGHT RAILWAY ON WHICH LOGS WILL BE BROUGHT TO A NEW SAW MILL IN NORTHERN FRANCE

the last few years from 1912 to 1915 the production from the forest has been from \$172,000,000 to \$177,000,000.

Accurate figures are however available as to the value of exports from Canada and the total for the years 1868 to 1914, that is, from Confederation to the present time, show that the contribution of the forest toward the payment of the public debts owed outside of Canada has been very large.

Value of Canadian Exports from 1868 to 1913.

Agricultural Products.....	\$1,625,890,767
Animals and their Produce	1,566,701,217
Forest Products.....	1,322,646,431
Mineral Products	731,514,593
Manufactured Products.....	571,049,221
Fisheries Products	443,233,427

It will be seen that the forest is second only to the farm in the supply of goods for export. It is considerably larger than the export of the mines or fisheries. A considerable proportion of the manufactured products is also to be credited to the forest.

Public Revenues from Forests

Further, the forest has been considered and used as a source of direct public revenue in Canada. So as to accomplish this more fully the title to timber lands has been kept in the Crown and the state has not only received a purchase price for the timber but a rental for the ground and royalty on the timber taken out. The annual revenue of the different governments in Canada which own