

FIGURES NOS. 408 T AND 409 T.—LADIES' NÉGLIGÉ GOWNS.

(For Illustrations see Page 301.)

FIGURE No. 408 T.—This illustrates a Ladies' wrapper. The pattern, which is No. 4437 and costs 1s. 6d. or 35 cents, is in thirteen sizes for ladies from twenty-eight to forty-six inches, bust measure, and is differently portrayed on page 325 of this magazine.

Velvet and figured French challis are here daintily combined in the wrapper, which is perfectly close-fitting, although it presents a gracefully *négligé* effect at the center of the front and back. The upper parts of the fronts form a round yoke, to which the lower parts are joined after being laid in overlapping plaits near the hemmed front edges, the plaits falling in natural folds to the lower edge. Underlying the fronts are short fronts of lining, which are fitted by single bust darts and may be closed with lacing cord or in any preferred way. Single bust darts taken up with those in the lining, and long under-arm darts fit the fronts closely back of the fulness, and between the darts patch pockets with pointed laps are conveniently located below the hips. The back is plaited at the center to correspond with the front, and is arranged upon a short, fitted back of lining that is faced and revealed in round-yoke shape at the top; and side-back gores complete the graceful adjustment. Two ruffles of lace encircle the foot of the skirt, a ruching of ribbon heading the upper ruffle, with pretty effect. A frill of lace follows the low, round outline of the front and back, a bow of ribbon is placed on the frill at the closing, and a rosette-bow is tacked to the center of the pocket. Lace frills droop from the gathered lower edges of the full sleeves in lieu of the close cuffs provided by the pattern. The velvet collar is in Byron style.

The mode is particularly well suited to combinations of colors and textures and is susceptible of considerable variety in the way of decoration. The wrapper may be suitably worn at home at informal breakfasts and luncheons. All sorts of fabrics, including cashmere, serge, Surah, camel's-hair, India and China silks, wash silk, Bengaline, Henrietta, gingham, seersucker, lawn, chambray, outing cloth, and nainsook, will make up prettily by the

mode, and personal fancy for decoration may be freely indulged

FIGURE No. 409 T.—This illustrates a Ladies' wrapper. The pattern, which is No. 4407 and costs 1s. 6d. or 35 cents, is in thirteen sizes for ladies from twenty-eight to forty-six inches, bust measure, and is shown differently developed on page 326 of this publication.

The wrapper will be found particularly agreeable as a lounging gown for country and sea-side wear, for which purpose it is here shown stylishly developed in a pretty variety of outing cloth. The back is closely fitted by a center seam and side-back gores, the fronts fall full and free from short shirrings at the neck, and a close effect at the sides is produced by long under-arm darts, in which are included short, fitted fronts of lining. The use of the lining fronts, however, is optional, as the wrapper will be complete without them. Underfolded plaits below the waist-line at the middle three seams extend in stylish folds to the edge, and a knotted cord girdle is doubled and tied about the waist to confine the fulness gracefully. The collar is in Byron style. The sleeves rise full and high on the shoulders and take the shape of the arm below the elbow, and the wrists are reversed in deep, rolling cuffs.

Outing cloths and flannels and all kinds of washable goods will be used for wrappers of this description. Wash silks will be especially suitable, and so will Surah, India and China silks, cashmere, serge and challis. Trimming will seldom be used on wrappers of this style, although fancy-stitched bands, braid, gimp, fancy stitching and narrow edging may be tastefully applied.

FIGURES NOS. 410 T AND 411 T.—LADIES' TOILETTES.

(For Illustrations see Page 302.)

FIGURES NOS. 410 T AND 411 T.—These two figures illustrate the same patterns—a Ladies' shirt-blouse and bell skirt. The blouse pattern, which is No. 4451 and costs 1s. 3d. or 30 cents, is in thirteen sizes for ladies from twenty-eight to forty-six inches, bust measure, and may be seen in three views on page 333 of this magazine. The skirt pattern, which is No. 4373 and costs 1s. 6d. or 35 cents, is in nine sizes for ladies from twenty to thirty-six

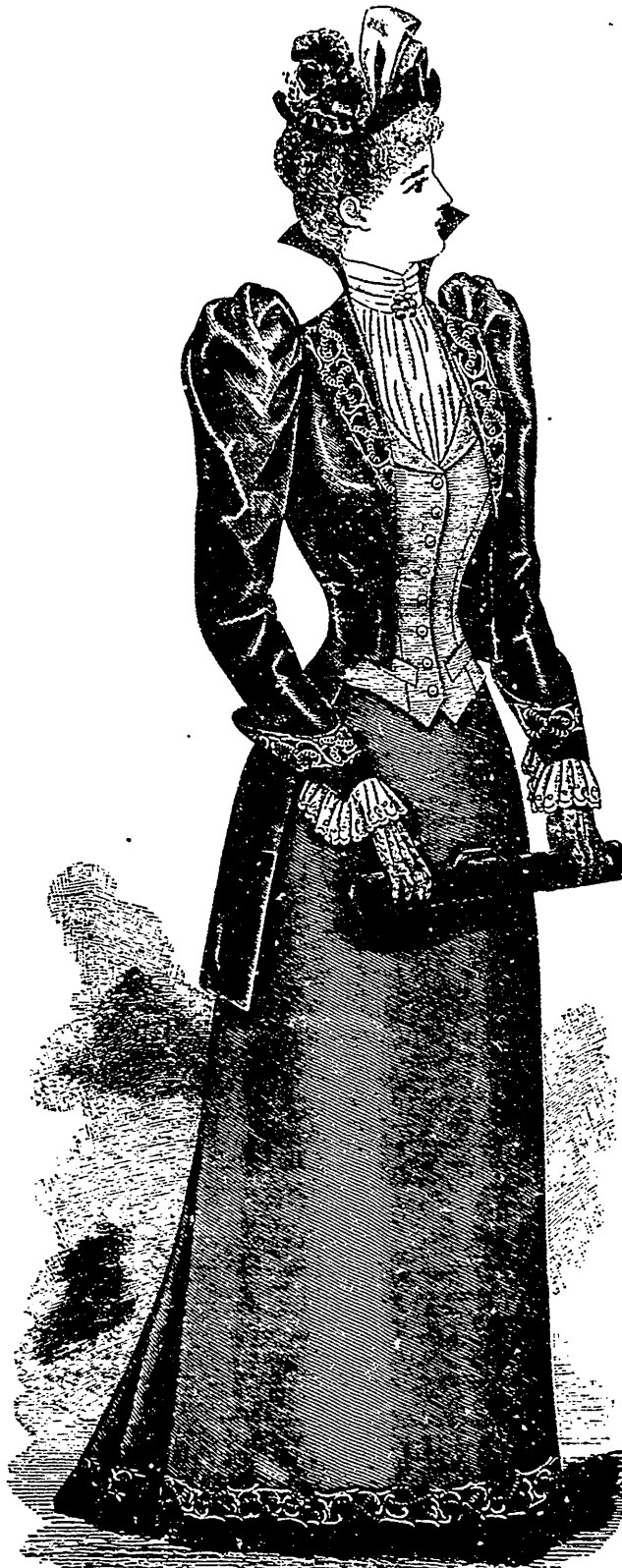


FIGURE No. 418 T.—LADIES' VISITING TOILETTE.—This consists of Ladies' Basque No. 4428 (copyright), price 1s. 3d. or 30 cents; and Skirt No. 4286 (copyright), price 1s. 6d. or 35 cents.

(For Description see Page 311.)