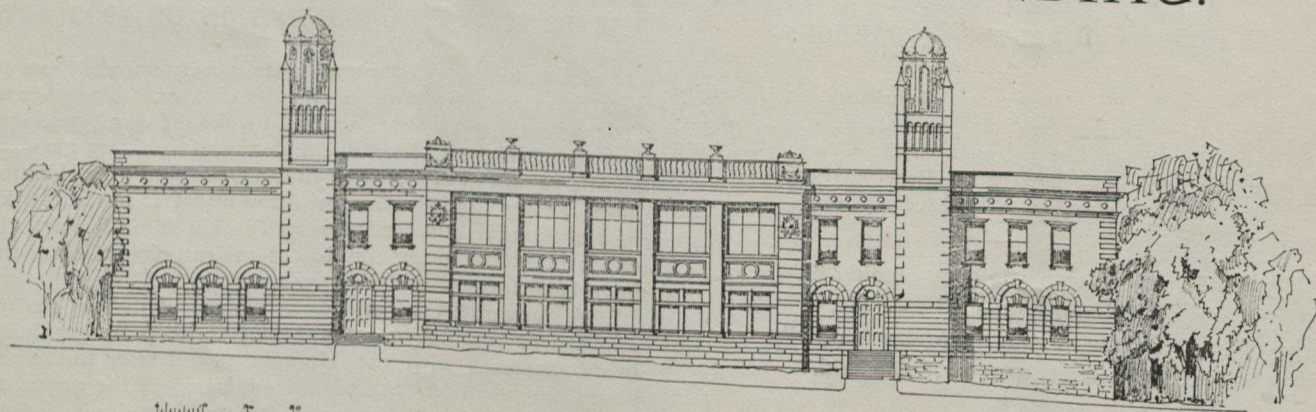


However, all the interested parties began to understand each other better before long, and the final number, "Lovely Night," was sung splendidly. The soloists and the elocutionists did well, and each of their selections was encored. Owing to the fact that the majority of the audience were Scotch Presbyterians it took Brophy some little time to get them roused, but when finally he did succeed in doing so he kept them going in fine style. The antics of an old couple in the very front row threatened to demoralize the whole discipline of the Glee

Club, and Ingram developed an unmistakable case of "ladies'-college hysterics."

After the concert the Queen's Hotel House-Party were at home to a few of their friends until the said friends were kicked out by the proprietor. The majority of the men returned to Toronto in the private car by the 11 o'clock train on Saturday morning. Of the others, those who had not taken the earlier train for home, took advantage of the opportunity to visit Uxbridge, Lindsay, and other places.

THE NEW MEDICAL BUILDING.



PROPOSED BUILDING FOR THE UNIVERSITY OF TORONTO MEDICAL FACULTY, WEST FRONT.

IN this week's issue of the *Varsity* we are able, through the courtesy of the *University Monthly*, to present to our readers a cut of the new medical building which in the near future is to adorn Queen's Park.

The building, which is to cost \$125,000, will be situated between the Library and the Biological building, and will face westward. It will be two stories in height in front, and because of the ravine four stories in the rear. Its area is to be about the same as that of the Biological building. It will present a very handsome appearance from the front, as it will be crowned by two towers, and in color will match University College. A space of about 130 feet will be left between the new building and the Library, and there will be a passage between it and the Biological building.

We are assured that the greatest care is being taken by the architect, Mr. Darling, to make this a model structure of its kind. It will be constructed on the same plan as Harvard's new medical buildings, which are to be built from Mr. J. Pierpont Morgan's princely gift to that university. The laboratories will be constructed on the "Unit system," each one being normally 23 x 30 feet, and capable of being enlarged or decreased in size to suit large or small classes. This change in size is rendered possible, as the partitions are moveable, being independent of the main structure of the building. The great difficulty in the construction of laboratories has always been in providing for proper light and ventilation. This difficulty, it is expected, will be overcome by having practically the whole of the 30 foot wall of each labor-

atory a plate glass window, and using the towers for purposes of ventilation.

The Dean's Department and Medical Library will be in front on the ground floor as entered from the west. The Arts Department of Physiology will also be on this floor and will occupy the south wing.

The Medical Faculty has long felt the need of this building. Under the present system the students find themselves under the great disadvantage of being divided into two parts; the two junior years being at the Biological Building, and the two senior years in the east end of the city at the old Medical School. The number of students has increased so rapidly of late that the old school is now entirely inadequate for its purposes. The senior students also find it disagreeable to be situated so far from the university that they cannot make use of many of the institutions connected with it.

The Medical Faculty is fast increasing in importance. There are now over four hundred students registered in it. When these are all brought together in the new building the faculty's efficiency will be greatly improved.

The work of construction will commence soon, and the building will be completed in time for the Michaelmas term of next year. And as Principal Hutton has said with "University College building as an example of what architects should do, and the School of Practical Science as an example of what architects should not do," Mr. Darling will, no doubt, give us another building of which the University of Toronto may be proud.

W. H. MCGUIRE.