

pany's smelting works at Ladysmith, both on Vancouver Island.

The manager of the Hilcrest mine near Frank has again gone east. Before going he announced to John Galvin and J. A. McDonald, of the U.M.W.A., who were endeavouring to secure an agreement for the mine workers, that the mine will remain idle indefinitely.

Professor R. W. Brock of the Geological Survey department of Canada has been employed by the Ontario bureau of mines to make an examination of the Larder lake region in northern Ontario. It has been announced that later in the summer he will join W. H. Boyd in the Lardeau district, where the geological and topographical work necessary to complete the southern half of the Lardeau map-sheet will be taken up where left at the close of the field-work season of 1904.

Dr. Robert Bell of the Canadian Geological Survey has been elected a corresponding member of the Geographical Society of Paris, France. This society was founded in 1821 and is one of the oldest and largest of the geographical societies of the world. It will be remembered that Dr. Bell, who on March 1 last completed his fiftieth year of active official service, was not long ago awarded the Patron's or King's Gold Medal of the Royal Geographical Society of Great Britain, and the Cullum Medal of the American Geographical Society. He had already been honored by King Edward VII. with the Companionship of the Imperial Service Order "for faithful service." The doctor, who after several years as acting director of the Geological Survey Department of Canada last year made way for A. P. Low, is still in active service and will spend the ensuing field work season in geological work in the region north of lakes Superior and Huron, Ontario.

Work has been commenced on the Lehigh Portland cement works, four miles from Belleville, Ontario. The plant, when completed, will be the largest of its kind in Canada.

### COAL MINING NOTES.

An agreement to cover two years, has been reached between the Alberta Railway and Irrigation Company, which owns the Lethbridge colliery, and the United Mine Workers of America representing the men working in the company's coal mine. The company has conceded recognition of the miners' union, which it had long refused. The agreement settles wages disputes and the question of eight hours' work at the face in the mine. P. L. Naismith is the company's manager.

H. N. Galer, manager of the International Coal and Coke Company, is reported in the press to have stated that this company's coal mines and coke plant at Coleman, Southwest Alberta, which were closed during recent labour troubles, are again working to present full capacity, which is an output of 1,600 tons of coal a day. Some 1,300 tons of coal are sold daily for steam purposes and the balance of production made into coke which is sold to Boundary, B.C., smelters.

The Alberta Coal and Coke Company is opening a coal mine near Lundbreck. Plans for a plant are being prepared by Chicago engineers. H. N. Galer is manager of this company conjointly with the International company.

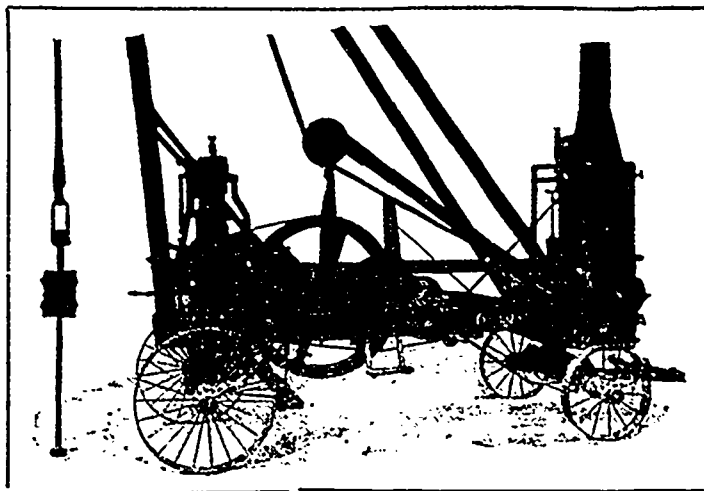
The *Frank Paper* says that the growth of the coal mining industry in Alberta is evidenced by the announcement that seven new local unions of the United Mine Workers of America, are soon to be organized at different points in District 18.

The *Miner* states that at Rossland "considerable coal is coming in from the collieries, including Bankhead, Crow's Nest Pass Coal Company's, Frank, Lethbridge, Coleman and elsewhere. Now that the consumption of coal for household purposes has decreased the mines are being well supplied. The mining companies will take advantage of the situation and lay in surplus supplies for possible emergencies."

# Prospecting Drills

Hollow Rod, Core and  
Cable Types.

Also Combination Drills, handling any combination of these systems on the same machine. Our catalogue on Core Drills contains valuable information that every driller should have. We also solicit enquiries for Diamond Drills, Drill Steel, Safety Blasting Fuse, etc.



For Water  
Oil,  
Gas,  
Minerals,  
Etc.

## MUSSENS LIMITED

HEAD OFFICE: MONTREAL

Vancouver Branch

359 WATER STRE