

just this kind of re-adjustment. It is very disastrous for the time being to the men who have jumped into a calling already overcrowded, but the inexorable business law of supply and demand makes little account of the feelings and wishes of the surplus traders. After the weeding out process is completed the general prosperity will be enhanced by it. — *Chicago Journal of Commerce.*

The export of cattle from Montreal to Great Britain since the opening of navigation has been 19,000 head—5,000 more than last year to the same time.

The Confederation Life Assurance Company intend to erect at once a large solid stone and brick building which will be suitable for wholesale purposes at the northwest corner of Princess and Bannatyne streets.

Mr. CHAS. MURRAY, manager since 1874 of the London branch of the Federal Bank, has resigned that position to assume duties in connection with Ontario Investment Association of that city, of which he is president.

PROMOTERS of petroleum elsewhere are adopting the American pipe lines that have proved so successful. The latest proposal is to lay a pipe entirely across Persia, from the Caspian Sea to the Persian Gulf. The length of line would be between 700 and 800 miles.

THE production of lead in the United States now almost equal that of England, being nearly 140,000 tons per year. The imports have dwindled into comparative insignificance. The leading lead State is Colorado, turning out half the total annual production of the States.

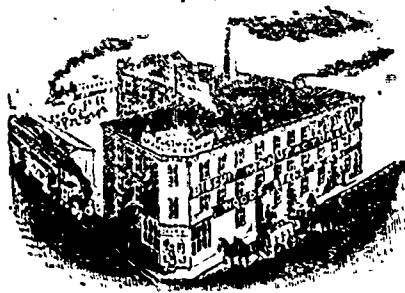
Some facts regarding railroad freight are curious, as for instance it costs 4 cents per ton to unload tierces and 24 cents to unload light boxes. The chief reason is that one can be rolled while the other must be handled. Iron beams cost \$2.05 per car to unload with tackle and \$5.61 without. It costs 81 cents per car to unload rolls of leather, but \$5.76 per car for loose sides.

CARL KAUFFMAN,
Manufacturers Agent & Commission Merchant
SPECIALTY:
Cigars imported from Hamburg, Germany.
42 FRONT STREET EAST, TORONTO.

EDWARD TERRY,
PORTLAND, KEENE'S and THORALD CEMENTS.
PLASTER PARIS,
Fire Brick and Clay, Sewer Pipes, Hair, Lime, White and Grey, Land Plaster, Salt, &c.,
23 and 25 GEORGE STREET, TORONTO

Westman & Baker,
119 Bay St., Toronto, Ont.,
Manufacturers of the latest improved
GORDON PRESSES,
PAPER CUTTERS,
BOOKBINDERS' STANDING PRESSES,
LITHOGRAPHERS HAND PRESSES,
COUNTING MACHINES, CHASES, &c.
All kinds of large printing presses set up and adjusted and for Price List.

ENCOURAGE HOME INDUSTRY. THOMAS G. F. XENOS, Manufacturer of Choice Havana Cigars. All orders promptly filled. 361 Main Street, opposite Dundas Block Winnipeg.



WOODS & CO.,
Manufacturers of
Biscuits, Confectionery, etc., etc.
Factory and Office—Corner Higgins, Fonseca and Argyle Streets,
WINNIPEG.

F. Osenbrugge,
Dealer in
HIDES, SKINS, FURS, PELTS, TALLOW, &c
Manufacturer of
Fur and Skin Rugs, Robes, Mats,
GARMENTS, Etc., Etc.
Furs and Skins Repaired, Cleaned Dressed and Renovated. A full line of Native Skins and Furs always on hand.

HIGHEST MARKET PRICE
PAID FOR FURS, SKINS, HIDES, PELTS, &c
WAREHOUSES AND OFFICES:
NOTRE DAME STREET EAST,
WINNIPEG.

G. F. STEPHENS & CO.,
Importers of and Wholesale Dealers in
Paints, Oils, Glass
VARNISHES, BRUSHES, PLASTER,
GOLDEN STAR MACHINE OILS.

NORTHWESTERN AGENTS FOR
Benny, Macpherson & Co., Importers of Shell and Heavy Hardware, Montreal.
Peck, Benny & Co., Manufacturers Cut Horse and Clink Nails, Railroad Spikes, Horse Shoes, Tacks, Brads, etc., Montreal.
Alex. McArthur & Co., Manufacturers Tarred Paper, Montreal.
Colin McArthur & Co., Dominion Wall Paper Works, Montreal.
Jas. W. Tester & Co., Manufacturing Confectionery, Montreal.

35 Portage Avenue,
WINNIPEG, MANITOBA.

N. BAWLF,
WHOLESALE DEALER IN
Grain, Flour and Feed
Special attention given to
GRAIN EXPORTS.
Cor. Princess & James St. West, **WINNIPEG**

A. Ramsay & Son.

OIL AND COLOR MERCHANTS.

Plate Glass ! Colored Glass !!
Enamelled Glass, etc.

5 McDERMOTT STREET,
WINNIPEG.

FERRY PELLATT. HENRY MILL PELLATT.
Pellatt & Pellatt,

STOCK BROKERS,

46 KING ST. EAST, TORONTO.

Members Toronto Stock Exchange.

HUDSON BAY CO.'S SHARES, ETC.
Bought and Sold for cash or on margin.

ORDERS BY LETTER OR TELEGRAPH
Receive prompt attention.

MONEY TO LEND.

MORTGAGES & DEBENTURES PURCHASED.

Western Canada Loan & Savings Co.

HEAD OFFICE, TORONTO, WALTER F. LEE, Manager.

Winnipeg Branch, Cor. Portage Av. & Fort St

F. B. ROSS,
Manager Winnipeg Branch

NORTH AMERICAN
Life Assurance Company.

HEAD OFFICE, TORONTO, ONT.

HON. ALEXANDER MACKENZIE, M.P., President
WM. MCCABE, F.J.A., Managing Director.

Special attention is called to this Company's
Semi-Tontine Investment plan of Insurance.

W. P. GRUBBE, Provincial Manager,
Office: Bank of Montreal Building, WINNIPEG

OGILVIE MILLING CO.

Mill at Point Douglas.

Capacity - - - 750 Barrels per day.

OFFICE :—Corner King and
Alexander Streets, Winnipeg.

A Full Stock of Patent Hungarian, Strong
Bakers' and Spring Extra Flour; Oatmeal, Pot
and Pearl Barley, Graham Flour, Cracked
Wheat, Bran, Shorts, Ground Feed, Oats, Bar-
ley.

Wheat buyers at all Shipping C.P.R. Stations.