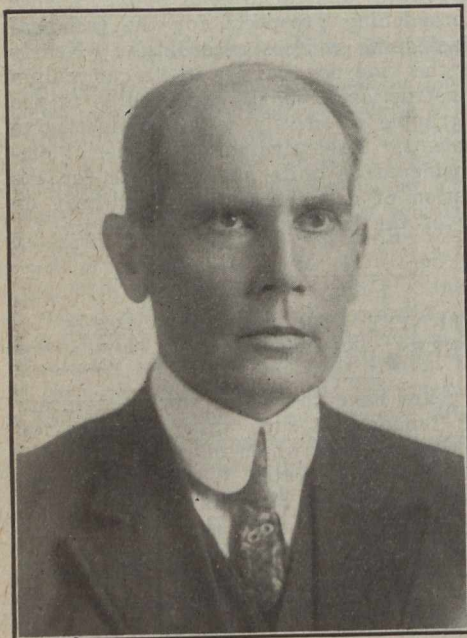


PERSONALS

J. ANTONISEN, who was recently appointed city engineer of Port Arthur, Ont., after having been in private practice for the past six years, was born in 1869 in Christiania, Norway, and received his preliminary education at the Latin



High School in Bergen, Norway, graduating in 1887. After working for a year in a shipbuilding plant in Bergen, he emigrated to the United States, where, during the following six years, he acquired some practical experience in civil engineering projects, particularly in water power developments. In 1894 he returned to Norway and studied mathematics for a year and then entered the University of Dresden, where

he graduated four years later in civil engineering. After graduation Mr. Antonisen was employed for two years as an assistant engineer on the Saxon government railways, and was then transferred to the department for improvement and regulation of rivers, where he was employed for four years. In 1904 he came to Canada and entered the employ of the Canadian Pacific Railway Co. in Winnipeg as terminal engineer. The following year he was appointed city engineer of Port Arthur, and subsequently was also appointed general manager of the public utilities of that city. In 1911 Mr. Antonisen resigned his positions at Port Arthur, and the following year he was appointed city engineer of Moose Jaw, Sask. After a year at Moose Jaw he accepted a position as superintendent of the municipal railway at Brandon, Man., but in 1914 resigned from that position and returned to Port Arthur, where he has since been in private practice. He was recently re-appointed city engineer of Port Arthur, succeeding L. M. Jones, who resigned in order to accept an appoint-

ment as resident engineer at Toronto for the Warren Bituminous Paving Co. of Ontario, Ltd.

CHARLES CAMSELL, of Vancouver, B.C., has been appointed to succeed R. C. McConnell, retiring deputy minister of mines for Canada.

PROF. J. S. DE LURY, of the University of Manitoba, will represent the mining industry on the bureau of industrial research to be set up by the government of Manitoba.

F. M. SYLVESTER has resigned his position as general manager of the Granby Consolidated Mining, Smelting and Power Co. It is understood that he will enter private practice as a consulting civil and mining engineer in British Columbia.

COLBORNE P. MEREDITH has resigned from the Ottawa Housing Commission to enter private practice with Franklin E. Belfry, under the firm name of Meredith & Belfry. Mr. Meredith has been architect member of the commission for two years.

J. J. MCARTHUR, of Ottawa, has been appointed as a commissioner to "define and mark the boundary line between the United States of America, and the Dominion of Canada, with the exception of that portion of it extending from the 45th parallel of north latitude through the St. Lawrence River, the Great Lakes and connecting waterways to the mouth of the Pigeon River."

S. J. CHAPLEAU, resident engineer, Public Works Department, Ottawa, has been appointed to act as representative for Canada on the board of control recommended by the International Joint Commission, for the construction of compensating works in St. Mary's River by the Michigan Northern Power Corporation and the Algoma Steel Corporation. Mr. Chapleau will act on the board of control during the absence in Europe of W. J. Stewart, who was formally appointed, in June, 1914, as Canadian representative.

JAMES GOVAN, architect for the provincial secretary's department of Ontario, has been granted a month's leave of absence to proceed to New Mexico and assist the authorities of that state in devising plans for the building of reformatories similar to the one at Burwash, utilizing prison labor for the purpose. Mr. Govan has been eight years in the service of the provincial government. During that time he was associated in an important capacity with the work of the Guelph reformatory, of which John M. Lyle was architect, and had entire charge of the design and construction of the fine group of buildings constituting the asylum for the insane at Whitby. The state of New Mexico had heard of Mr. Govan's excellent work and made a request for the loan of his services. Mr. Govan is a member of the advisory committee of architects of the United States.

OBITUARIES.

GEORGE BAKER, a railway contractor of St. Thomas, Ont., died on June 13th, aged 77 years.

JAMES FRANCIS WHITSON, commissioner of the Northern Development branch department of Lands and Forests, Ontario, died suddenly at Sudbury on June 12th. Mr. Whitson, who previously had been assistant director of surveys for some twenty years, was appointed eight years ago to the position which he held at the time of his death. During his tenure of office as commissioner he was responsible for the expenditure of several million dollars on northern development, chiefly on colonization roads. The territory covered by him extended from Manitoba to Quebec and from the Ottawa River to James Bay. Mr. Whitson was a past-president of the Ontario Land Surveyors' Association.

RICHARD MARPOLE, general executive assistant for the C.P.R. in British Columbia died at Vancouver on June 8th, aged 70 years. In 1881 Mr. Marpole was appointed to the position of assistant manager of construction of the Algoma branch, Nipissing division of the main line, C.P.R. Later he became superintendent of construction and operation of

the Lake Superior division, and in March, 1886, he was transferred to the Pacific division in the same capacity. The recognition of his ability gradually won for him the position of general superintendent of the Pacific division, which office he held with great success until 1907, when he was appointed to the position which he held at death.

KENNETH WILLIAM BLACKWELL, vice-president of the Canadian Steel Foundries, Ltd., and past-president of the Engineering Institute of Canada, died at his residence in Montreal on June 11th. Mr. Blackwell was born in England nearly seventy years ago, and was one of the founders of the steel-casting industry in this country. He was vice-president of the Merchants Bank of Canada and a director of several prominent business concerns. Mr. Blackwell's first position of responsibility came in the Grand Trunk Railway service in 1870, from which he rose through the grades of draughtsman, foreman and assistant superintendent to that of mechanical superintendent for the division between Toronto and Montreal. Subsequently, he became mechanical superintendent of the C.P.R. He was a charter member of the Canadian Society of Civil Engineers, and was elected president in 1902.