

# HOLT 60 H.P. **CATERPILLAR** GAS TRACTOR

## DOES YOUR WHEEL ENGINE SLIP?

Of course it does. Each one of them encounters the same obstacle—insufficient traction. When the ground is wet and soft it is impossible for them to operate, and even when the soil seems firm it is liable to drop into pot holes and become hopelessly mired down.

## THE CATERPILLAR HAS NO WHEELS TO SLIP!

It works as successfully on soft, wet, sticky or slippery soil or on plowed ground as it does on firm ground. It does not run on the ground, it runs on a smooth steel track. It utilizes the surface of the ground as a roadbed on which to lay its track.

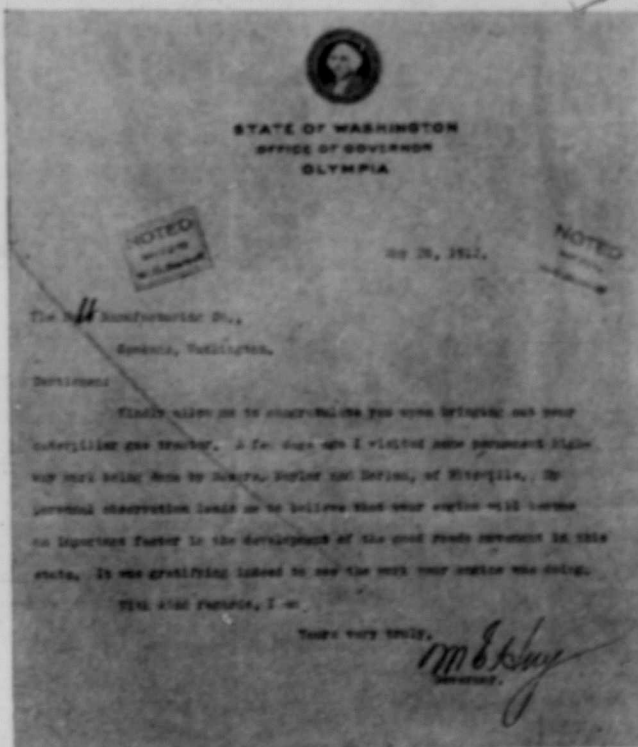
## THE CATERPILLAR CANNOT STICK IN THE MUD!

Its tractive surface is eight times greater than that of wheel engines; it weighs but nine tons; its ground pressure is seven pounds to the square inch.

### The Motor

is one of the finest four-cylinder, four-cycle gas engines made. Note how easily accessible it is. The operator can reach any part of it from a standing position on the ground. The cylinders are cast separately. Cylinder heads are removable. Two separate and complete ignition systems, constant level splash system of lubrication with sight feed, carburetur of special Schebler design insuring perfect mixture at all times. Connecting rods and crank shaft of special grade of crank shaft steel.

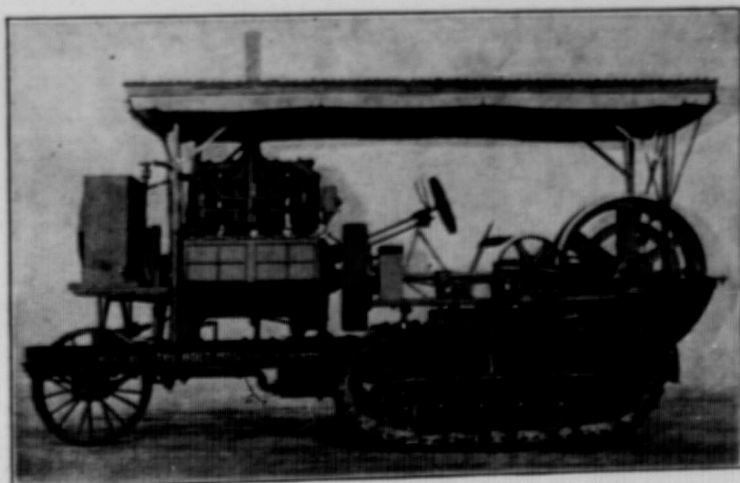
*Will work in any weather*



### The Transmission

is simplicity and directness realized. No planetary or reduction by drive mesh. Power transmitted by drive shaft to bevel gears on counter shaft and from counter shaft to drive sprocket. The drive to each Caterpillar wheel is governed by positive frictions, allowing entire machine to be driven by one Caterpillar wheel if necessary. This makes it possible to turn the Caterpillar in its own length. Multiple disc clutch allows load to be picked without jerk or jar absolutely positive.

*Will work in any weather*



60 H.P. 1912 MODEL CATERPILLAR



CATERPILLAR Pulling Ten 14-in. Pines and Packer at Namaka, Alta.

## CANADIAN HOLT CO. Ltd.

609 EIGHTH AVENUE WEST

CALGARY

ALBERTA

CANADIAN HOLT CO. LTD.  
609 EIGHTH AVE. W., CALGARY, ALTA.

Please send me Free Caterpillar Literature.

NAME.....

ADDRESS.....

G.O.....