

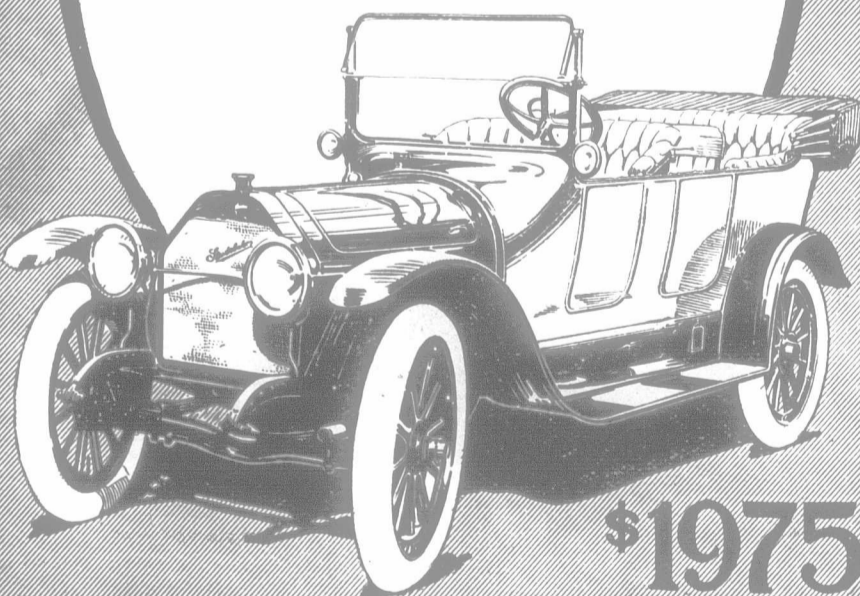
Studebaker SIX

Electrically Lighted
Electrically Started
Seven-Passenger

Literally nothing like it in the whole world—a seven-passenger "SIX" that is right in every respect, at a price that has no parallel. Manufactured in the strictest sense of the word; with Studebaker goodness built into every essential part, point and operation. A "SIX" that compels your consideration because you can't do as well by buying any other "Six."

The Studebaker Corporation
of Canada, Limited
Walkerville, Ontario

| | |
|----------------------------|------------|
| F. O. B. Walkerville, Ont. | |
| FOUR Touring Car | - - \$1375 |
| SIX Touring Car | - - \$1975 |
| SIX Landau-Roadster | - - \$2350 |
| SIX Sedan | - - \$2950 |
| "35" Touring Car | - - \$1500 |
| Six Passenger SIX | - - \$1800 |

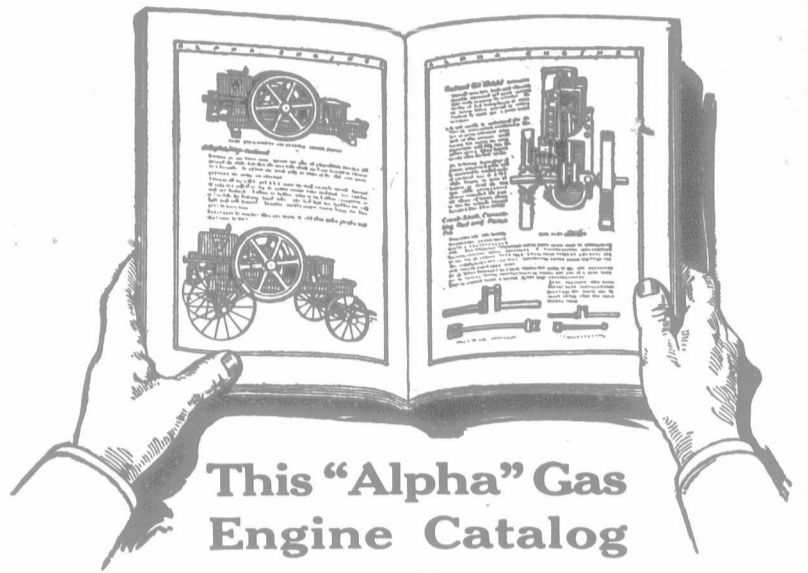


\$1975

Buy it Because it's a Studebaker

WE WILL GLADLY GIVE INFORMATION REGARDING THE USE OF
Lime
on your soil. The soil must be sweet to produce good crops. Where sorrel, horse tail, moss, etc., appear, the soil is sour, and you cannot expect the maximum yield of hay, cereal or fruit without correcting this acid condition. Lime Carbonate (Caledonia Marl) will do this. In many instances it has more than doubled the yield. We furnish blue litmus paper free with directions for testing your soil. Write us for further information. Agents wanted.

INTERNATIONAL AGRICULTURAL CORPORATION
Caledonia Marl Branch 827 Marine Bank Buildings, Buffalo, N.Y.



This "Alpha" Gas Engine Catalog

is now ready for mailing to all who are interested in reliable and economical farm power

IT tells all about an engine which is so well built that you can always depend upon it; which is so simple that a boy can run it; that can be run on either gasoline or kerosene; an engine that starts on the magneto and doesn't stop until you want it to; an engine that will do any kind of work, in any weather, anywhere.

The main object of this handsomely printed and fully illustrated book is to show you how very adaptable the "Alpha" Engine is, and how it is possible for you to select from the "Alpha" line just the size and type of engine and the equipment that will best fit your needs for farm power.

Eleven sizes, 2 to 28 horse-power. Each furnished in stationary, semi-portable, or portable style, and with either hopper or tank cooled cylinder.

DE LAVAL DAIRY SUPPLY CO., Ltd.
LARGEST MANUFACTURERS OF DAIRY SUPPLIES IN CANADA
MONTREAL PETERBORO WINNIPEG VANCOUVER



Natural asphalt is the life of roofing

And roofing *must* have life to withstand the weather. The natural oils in Trinidad Lake asphalt keep it full of life and resisting power.

Genasco

THE TRINIDAD-LAKE-ASPHALT
Ready Roofing

is made of this everlasting waterproofer of Nature. It is watertight and weatherproof. Because Genasco is sealed with this genuine *natural* asphalt, it doesn't crack, rot, break, or leak.

Ask your dealer for Genasco. Look for the hemisphere trademark. The KANT-LEAK KLEET makes seams watertight without cement and prevents nail-leaks. Write us for the Good Roof Guide Book and samples, free.

The Barber Asphalt Paving Co.

Largest producers in the world of asphalt and ready roofing.
Philadelphia, U. S. A.

D. H. Howden & Co., Ltd., London, Ont.
Canadian Asphalt Co., Ltd., Winnipeg.
Lewis Bros., Ltd., Montreal,
Ottawa, Toronto
Evans, Coleman & Evans, Ltd.
Victoria, B. C.

