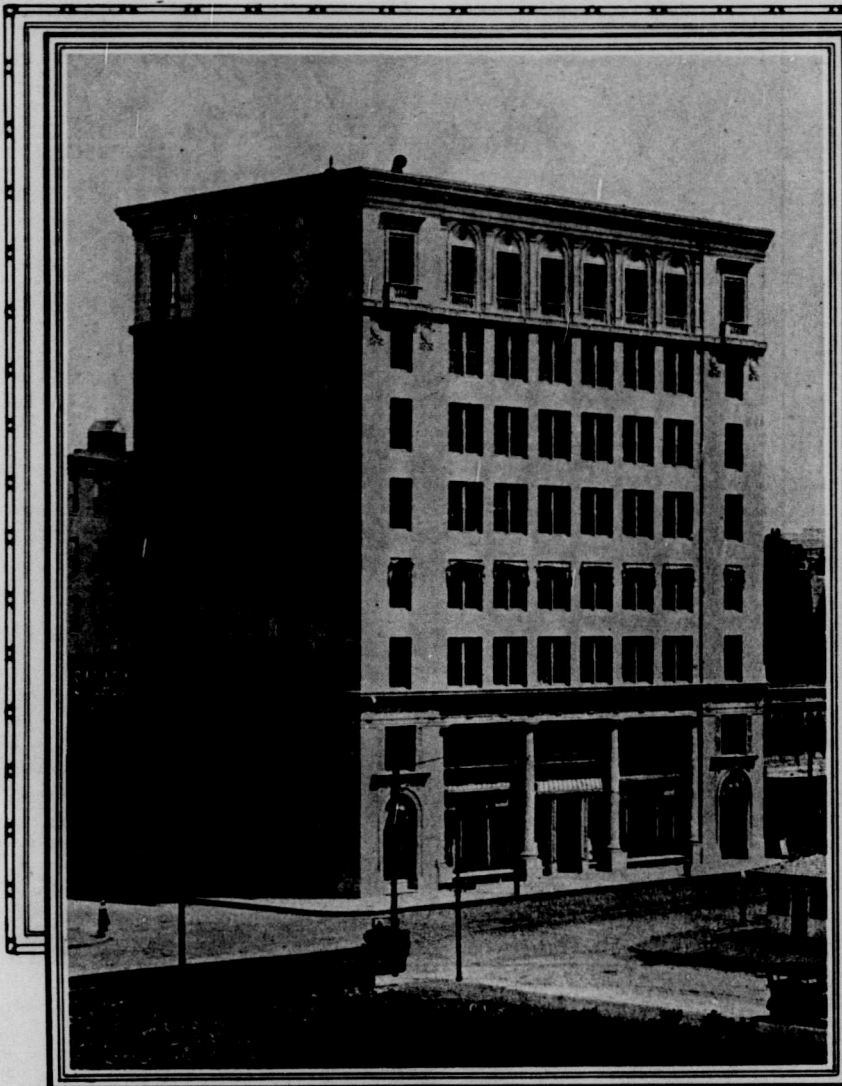


January 23, 1920

NEW ENGLAND GROCER AND TRADESMAN

11



SALADA TEA COMPANY
Corner of Berkeley and Stuart Streets, Boston

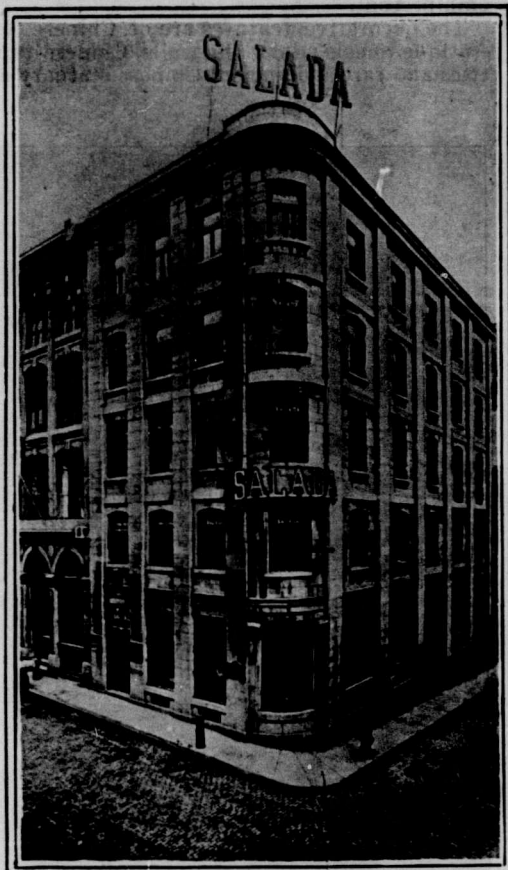


These Buildings Are the Monuments

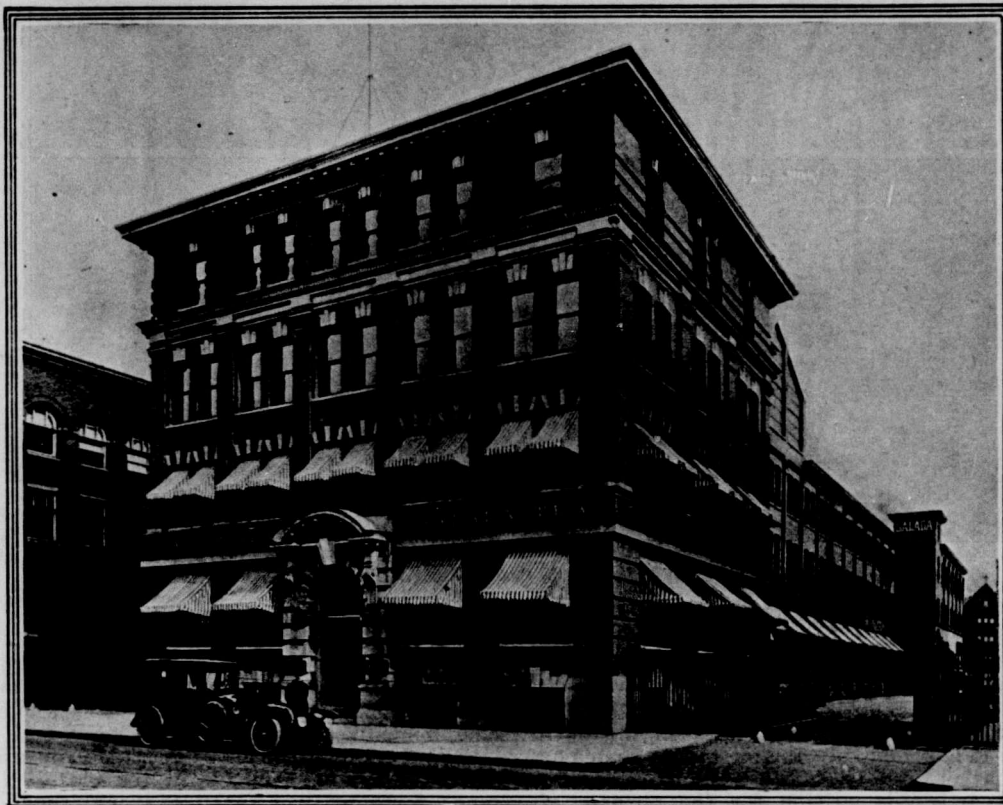
to America's appreciation of delicious tea. For twenty-seven years the "Salada" Tea Company has been giving the public the best ---an uninterrupted and unequalled quality of tea---and these buildings show the result.

The one at the upper left is the largest tea blending and packing warehouse in the world. It is located at the corner of Berkeley and Stuart streets, Boston, and is but one of three enormous plants operated by this Company at Boston, Toronto and Montreal.

The "Salada" Tea Company has its distribution branches also in New York, Philadelphia, Buffalo, Rochester, Chicago, Cleveland, Pittsburgh, Detroit, Los Angeles and London, Eng.



MONTREAL BUILDING
Salada Tea Company, Montreal, Canada



SALADA TEA COMPANY, TORONTO, CANADA

Please Mention the New England Grocer and Tradesman when Writing Advertisers

W. L. Mackenzie King Papers

Volume 32

PUBLIC ARCHIVES PUBLIQUES
CANADA