

# MOST FASHIONABLE SPRING STYLES



Misses' All-Wool Panama Suit

**13<sup>50</sup>**

J-7439. MISSES' SUIT MADE OF FINE ALL-WOOL PANAMA CLOTH. THE COAT is single-breasted, semi-fitting style, made with long shawl collar and turn back cuffs trimmed with corded silk, braid and buttons; pocket flaps and back trimmed to match; lined with silkaline; length 28 inches.

THE SKIRT is cut in nine gores with side pleats showing panel front, the gore in each side ending in scalloped design at the knee and being trimmed with braid and buttons, two side pleats complete the gore.

COLORS ARE, black, navy or brown. Price ..... **13.50**



7439

Misses' Repp Dress 4.50



Misses' Fancy Worsted Suit

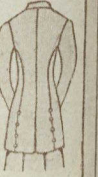
**12<sup>50</sup>**

J-6564. MISSES' SUIT OF FANCY WOVEN WORSTED, in stripe effect.

THE COAT is made in double-breasted style with semi-fitting back; collar is trimmed with covered buttons and silk braid loops, and lapels are faced with corded silk; buttons and silk braid are used on the cuffs, and small covered buttons give adornment to the back; lined with silkaline; length 30 inches.

THE SKIRT is an eleven gore model showing a double box pleat panel front; each gore is stitched flat over the hips and falls in open pleats below.

COLORS ARE, black, navy, green or rose. Price ..... **12.50**



Misses' Fancy Worsted Suit

**10<sup>75</sup>**

J-6565. MISSES' SUIT MADE OF FINE IMPORTED WORSTED, in neat woven stripe effect.

THE COAT is single-breasted with semi-fitted back and is trimmed on collar, cuffs and pocket flaps with small buttons and silk braid loops; buttons and braid are also used to adorn the back; lined with silkaline; length 30 inches.

THE SKIRT is made in nine gores with panel front stitched down flat over the hips and extending to the bottom in deep open pleats.

COLORS ARE, black, navy or grey. Price ..... **10.75**



6565

Junior Girls' Suit of Panama

**9<sup>00</sup>**

J-7489. GIRLS' JUNIOR SUIT OF ALL-WOOL PANAMA CLOTH, made specially for girls of 13, 15 and 17 years.

THE COAT is single-breasted and semi-fitting, trimmed with flat silk braid and silk soutache back and front and on cuffs; lined with silkaline; length 28 inches.

THE SKIRT is made in seven gores, stitched flat over the hips where a tab formed of braid appears and below which two pleats are shown extending to the bottom.

Made in navy only. Price ..... **9.00**

SIZES ARE: For ages 13, 15 or 17 years with choice of skirt lengths 31, 33 and 35 inches. The bust sizes of these suits are for 13 years 30 bust, for 15 years 32 bust, for 17 years 34 bust. When ordering state age and skirt length required—skirt length is measured from lower edge of skirt band to desired length in front—bust measure over largest part of bust under the arms. Sample of material sent on request, also an accurate tape measure.



7489

J-5343. MISSES' ONE-PIECE DRESS MADE OF IMPORTED REPP; front is designed with full length panel; has yoke and attached collar of imitation Irish crochet lace insertion; full length sleeves with deep cuffs trimmed with insertion; skirt is made with nine gore top yoke effect extending to the hips where a pleat is formed; kilted side pleats round the bottom give the fullness required.

Choice of colors, white, tan or sky. Price ..... **4.50**

Sizes for Misses' suits and dresses shown on this page are: Bust 32, 34 or 36, with choice of skirt lengths 33, 35 or 37 inches—32 bust for age 14 years, 34 bust for age 16 years, 36 bust for age 18 years.

State bust size and skirt length required when ordering.

Samples of material, also an accurate tape measure will be sent on request.

Our Spring and Summer Catalogue Lists Every Change of Fashion

**THE T. EATON CO. LIMITED**  
TORONTO CANADA

Our Free Book of Wall Paper Samples is Mailed on Request