

## A Woman's Correspondence

is doubly charming if written upon fine stationery.

And the graceful art of letter-writing is never more ably enhanced than when the correspondence is written upon Iris Linen note-paper.

This series of ladies' fine note-papers is the representative quality stationery for discriminating Canadian women.

## Iris Linen

is sold at all good stationers. But if you have any difficulty in securing it, write to our office nearest you, and we will tell you where to get it.

**Barber-Ellis, Limited,**

Brantford, Toronto, Winnipeg, Vancouver.



By Appointment

**WHITE HORSE**  
WHISKY

Has  
Great Age and Bouquet; is Heart Tonic,  
Digestive and Non-Gouty.

Ask Specially for WHITE HORSE.

Sold by all Wine Merchants, Grocers & Hotels.

# The Canadian Courier

A National Weekly

Published at 12 Wellington St. East, by the Courier Press, Limited

VOL. XIV

TORONTO

NO. 12

## CONTENTS

### HOME PRODUCTS NUMBER

Human Side of Big Business . . . By John E. Webber.

A Glance at the Welfare Work of some United States Industries.

Human Factor in Management . . By W. W. Swanson.

A University Professor's Ideas of the Dangers in Scientific Management.

Western Canada Market . . . . . By C. F. Roland.

Makers of Big Industries . . . . . By Augustus Bridle.

Three typical manufacturers who have helped to build industrial towns.

Manufacturing Areas . . . . . Industrial Map of Canada.

The census figures of 1910 presented in a new and graphic form.

A Model City . . . . . By Hugh S. Eayrs.

The City Born Lucky . . . . . Illustrated.

The Story of Medicine Hat's Industrial Growth.

Reinstatement of Dolan, Story . . By J. A. Holden.

Illustrated by Arthur Lismer.

Demi-Tasse . . . . . By Staff Writers.

Money and Magnates . . . . . By the Financial Editor.

The River of Stars, Serial . . . . . By Edgar Wallace.

News of a Week . . . . . Photographs.

For the Juniors . . . . . Illustrated.

Reflections . . . . . By the Editor.

## Are You Going Abroad?

If so—you are necessarily interested in knowing how to carry your funds.

There are different ways—but they are not all safe—nor are they all convenient.

You want both safety and convenience.

It will be in your interest therefore to fill in and mail the coupon furnished below, on receipt of which we will be pleased to send you full particulars regarding

## Dominion Express Travellers Cheques

the best medium for carrying funds when travelling in any part of the world.

Money Order Department,  
**Dominion Express Co.,**  
32 Front St. West, Toronto.

Please send particulars re your Travellers Cheques

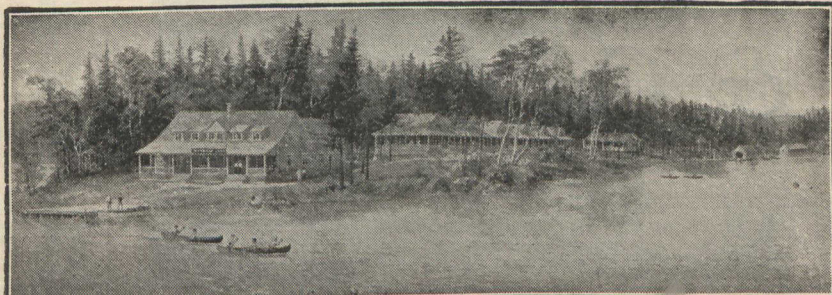
Name .....

Address .....

## ALGONQUIN NATIONAL PARK

THE IDEAL SUMMER RESORT FOR CAMPER, FISHERMAN, CANOEIST.

200 miles north of Toronto, 175 miles west of Ottawa Altitude, 2,000 feet above sea level  
Good hotel accommodation



### THE NEW CAMP-HOTEL "CAMP NOMINIGAN"

being inaugurated this season, will prove attractive. This sort of camp is new to the "Highlands of Ontario." It consists of log cabins constructed in groups in the hearts of the wilds, comfortably furnished with modern conveniences, such as baths, hot and cold water, always available.

Handsomely illustrated folder free on application to J. Quinlan, Bonaventure Station, Montreal; C. E. Horning, Union Station, Toronto, Ont.

G. T. BELL, Passenger Traffic Manager, Montreal.

H. G. ELLIOTT, General Passenger Agent, Montreal.

## CANADIAN PACIFIC

### GREAT LAKES SERVICE

FASTEST AND MOST LUXURIOUS OF STEAMERS

Port McNicoll, Sault Ste. Marie,  
Port Arthur, Fort William

### 57 HOURS

TORONTO TO WINNIPEG

Leaving Tuesdays and Saturdays.  
Other Luxurious Steamers Mondays, Wednesdays, Thursdays.

### STEAMSHIP EXPRESS

Leaves Toronto Daily, except Friday and Sunday, 12.45 noon, and arrives at Ship's side 3.55 p.m. Parlor Cars, First-class Coaches.

A SERVICE PERFECTED BY STUDIED EFFORT AND YEARS OF EXPERIENCE

## MUSKOKA LAKES POINTS

Conveniently and Comfortably Reached via  
Canadian Pacific Railway and

### BALA

THE HEART OF MUSKOKA LAKES DISTRICT  
**MUSKOKA LIMITED**

Leaves Toronto

DAILY EXCEPT SUNDAY 11.50 A.M. ARRIVING BALA 3.40 P.M.

RETURNING LEAVES BALA

DAILY EXCEPT SATURDAY 8.00 P.M. ARRIVING TORONTO 11.50 P.M.

Improved Facilities for Passengers and Baggage at Bala Wharf

Particulars from Canadian Pacific Agents or write M. G. MURPHY, D. P. A., C. P. Ry., Toront