

bride's house, where she humbly sued for the forgiveness of her father, kneeling at his feet all tears.—"Forgive, forgive me, dearest father!" sobbed the lovely suppliant. "Forgive you!" exclaimed the old gentleman; "why, I am only too glad to get rid of you. Your ill-temper and idleness have been the plague of my life, and make your marriage no loss to me, my dear child. So take her," added the old gentleman, generously, addressing the happy man; "and may you be happy!"

GRATIFYING SCIENTIFIC INFORMATION.—If there is anything that we like in a scientific work it is clearness. When, therefore, we read recently, in medical volume, that "the thalamoptical are the essentials of the sensory tracts, as the corpora striata are of the motor," we felt completely happy, because we perceived at once, with stereoscopic distinctness, precisely what the author meant. What he means is, of course, that the thalamoptical are the essentials of the sensory tracts, as the corpora striata are of the motor. The information is especially gratifying, because we must all be impressed with the conviction that if the thalamoptical had not been essentials of the sensory tracts, existence would at once have become a disgusting and unendurable burden, and woman's love a hollow mockery. As it is, we are filled with a holy and satisfying calm.

Loss of memory is ever the first indication of a disorder or degeneration of Nervous element. The rapidity with which the mind is restored by the use of Feltow's Compound Syrup of Hypophosphites is perhaps the best proof of its power in re-establishing the strength of the nervous system.

No testimony speaks higher of Jacobs' Liquid than its merits deserve.

Chess.

Solutions to problems sent in by Correspondents will be duly acknowledged.

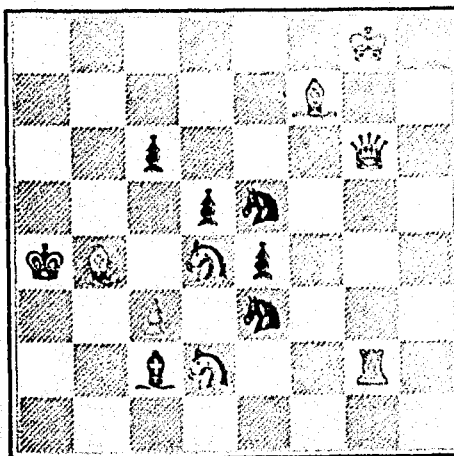
G. H. Ramsey, Cobourg.—In your Problem marked No. 3, is there not a Bk. pawn required at 5th to prevent Black's playing... and might not the pawns at R. 2nd and Q. 7th be omitted in that case? It seems to me that a Bk. B. at K. B. 3rd instead of pawn, would be an improvement.

A game played recently in the Montreal Chess Club between two of the leading members.

Table with columns for Black and White moves, listing chess pieces and their positions on the board.

(a) This loses a pawn, but Black has the freer game. (b) Much better than advancing Q. P. (c) Doubling the Rooks seems preferable. (d) Overlooking, apparently, the loss of the "exchange." (e) Forcing an exchange of Bishops, after which the White pawns must win.

PROBLEM, No. 65. By R. H. Ramsey, Cobourg.



White to play and made in three moves.

Welland Canal Enlargement!

NOTICE TO CONTRACTORS.

SEALED TENDERS, addressed to the undersigned, and endorsed "Tender for Welland Canal," will be received at this Office until Noon of FRIDAY, the 10th Day of JANUARY next (1873), for the construction of Nine (9) Locks and Nine (9) Weirs—the excavation of the Lock and Weir Pits connected with them—the intervening Reaches, Race-ways, &c., on the new portion of the WELLAND CANAL, between Thorold and Port Dalhousie.

The work will be let in sections: four of which numbered respectively 8, 9, 10, and 11, are situated between St. Catharine's Cemetery and the Great Western Railway, and Sections Nos. 15 and 16 are situated between Brown's Cement Kilns, and what is known as Marlatt's Pond.

Tenders will be received for certain portions of the enlargement and deepening of the prism of the Canal above Port Robinson, and for the removal of part of the West bank of the "Deep Cut," &c., &c.

Maps of the several localities, together with Plans and Specifications of the works, can be seen at this Office, on and after FRIDAY, the 13th Day of DECEMBER next, where printed forms of Tender will be furnished. A like class of information relative to the works north of Marlatt's Pond may be obtained at the resident Engineer's Office, Thorold; and for works south of Allanburg, Plans &c., may be seen at the resident Engineer's Office, Welland.

All Tenders must be made on the printed forms, and to each must be attached the actual signatures of two responsible and solvent persons, residents of the Dominion, willing to become sureties for the due fulfilment of the contract.

The Department will not, however, bind itself to accept the lowest or any Tender.

By Order, F. BRAUN, Secretary. Department of Public Works, Ottawa, 2nd Nov., 1872. 6-22 d

THEATRE ROYAL.

MANAGER, MR. GEO. HOLMAN.

Mr. Geo. Holman begs leave to state that he will open the Theatre Royal on MONDAY EVENING, December 2nd, for a season of

OPERA, DRAMA, AND MUSICAL SPECTACLE!

The season will be inaugurated, as above, with THE HOLMAN ENGLISH OPERA TROUPE.

MISS SALLIE HOLMAN. MISS JULIA HOLMAN. MR. HENRY C. FRANKS. MR. JOSEPH BRANDEIS. MR. GEORGE H. BARTON. AND A FULL COMPANY.

The opening performance will be announced in future advertisements.

The Box Sheet will be opened at Prince's Music Store on Saturday morning, Nov. 30th, at 10 o'clock. 6-22 m

EXTRAORDINARY!—Sheet Lightning, the new mystery, in 5 acts; Mazzenium Wira, the sun-light, 5 acts; Pharaoh's Serpents, the scientific marvels, 5 acts. Sent postpaid on receipt of price. Catalogues sent free. Address: McIVER & CO., Wholesale Dealers in Novelties, Brockville, Ont. THE TRADE SUPPLIED. 6-22 ft

PALAIS MUSICAL, CHAMP DE MARS.

NEW VARIETY THEATRE.

OPEN EVERY NIGHT. The best Entertainment ever offered to the Citizens of Montreal.

HARTLEY NEVILLE, Sole Proprietor and Manager. 6-22 m

EVERYONE

Should send for a Specimen Number of the "Family Herald," the Best Newspaper and Family paper published in this country. Splendid Stories in every number. Magnificent prizes of Silver Ware to every Subscriber and every Clubber. Specimens free. Address The Family Herald Publishing Company, 91 St. James St., Montreal. 6-21 e

CYANO-PANCREATINE.

THIS MEDICINE, prepared by the Sisters of the General Hospital of Montreal, (Grey Nuns), contains an ingredient which can in any way injure the system.

As a compound, it is entitled to rank amongst the most beneficial of all special remedies, principally in the following cases:

1st. In cases of derangement of the digestive faculties, where it produces astonishing effects throughout all the stages of the disease, provided there be no organic lesion, in which case the Medicament can only impart a temporary relief. Its curative properties have been already tested in a great number of the above mentioned cases, thus leaving no doubt of its efficacy.

2dly. In Bronchitis or Pulmonary Catarrh, it acts most soothingly, facilitates expectoration, relieves the cough, and brings the malady to a prompt solution.

3dly. In Coughs tending to Consumption, it causes a visible change for the better, renders expectoration easy, and assists the stomach to dispose of those other remedies suited to the peculiar nature of the case, thus tending not only to alleviate suffering, but also to prolong life.

WHOLESALE AGENTS.—EVANS, Mercer & Co., Montreal. For sale in retail by all respectable Druggists and Medicine Vendors. 4-23x1-1m

PROSPECTUS OF A NEW, GENERAL, AND DETAIL MAP OF THE WHOLE DOMINION OF CANADA, FROM NEWFOUNDLAND TO VANCOUVER ISLAND.

WITH THE Northern and Western States.

BY J. JOHNSTON, C.E., MONTREAL. TO BE PUBLISHED IN THE EARLY PART OF 1873

BY GEO. E. DESBARATS.

Size of Map, about 7 ft. x 5 ft. Extending (East and West) from Newfoundland to Manitoba and (North and South) from Hudson's Bay to latitude of New York, drawn on a scale of 25 miles to the inch, and compiled from the latest Astronomical Observations, Official Surveys, and Records of the Departments of Crown Lands, as well as from County maps, Local and Railway Surveys. From Manitoba to Vancouver Island will be delineated on a scale of 50 miles to the inch. This arrangement of the Map admits of the old Provinces of Upper and Lower Canada, New Brunswick and Nova Scotia being mapped on a scale large enough to show accurately all bona fide rivers. The Great N.W. Territory and British Columbia—where comparatively little has been done in the way of actual survey—a smaller scale answers every purpose. The whole Map is thus kept within the dimensions best adapted for general office use.

The following are some of the most important details, which have been collated with great care from the latest Official Plans and Reports:—Recent Explorations and Surveys in the "N.W. Territory;" New Boundary Lines; Electoral Districts and Divisions; New Townships and Mining Locations; all New Railways; Canals and Colonization Roads; the "Free Grant Lands;" and New Settlements; Elevations of the Inland Waters and Mountainous regions above the Sea—marked in feet—and the correct delineation of all prominent Topographical features.

In connection with the General and Detail Maps, there will be two SUPPLEMENTARY OR COMMERCIAL MAPS exhibiting the relative geographical position of the Dominion and other countries, showing the great Routes of Travel both by Land and Water; shortest lines of communication; Telegraph lines in operation and projected; distances, &c., &c., with much other new and valuable information.

The explored route for the Canadian Pacific Railway with its connections—East and West—with accompanying Profile, will be accurately laid down from data supplied by the Government Engineer; also, the Route of the Northern Pacific Railway (United States), of which a correct plan of the actual location, specially prepared for this Map, has been sent to Mr. Johnston by the Chief Engineer.

ALL ADDITIONS AND CORRECTIONS WILL BE MADE TO DATE OF PUBLICATION.

Mr. Johnston has been engaged on the compilation and drawing, unremittingly, for a period of nearly four years. Neither labour nor expense has been economised in the endeavour to gain for this great Geographical and Topographical work the merit of being the STANDARD MAP OF CANADA for many years to come.

The manuscript has been submitted to the following eminent authorities, receiving their unqualified approval and recommendation:—

ANDREW RUSSELL, Esq., Geographer to the Dominion Government. LIEUT.-COL. DENNIS, Surveyor-General. THOS. DEYING, Esq., F.R.G.S., Surveyor-in-Chief, Ontario. SANDFORD FLYING, Esq., Government Engineer-in-Chief.

The Map will be coloured, in Counties, Districts, and Provinces, mounted on cloth, varnished, set on rollers, and furnished in the best style. Delivered to Agents and Subscribers complete in every particular, and ready to hang up.

Intending subscribers will please send in their names as early as possible. Parties at a distance will receive their Maps free of any charge beyond the price of subscription.

PRICE TO SUBSCRIBERS \$10 Per Copy. NON-SUBSCRIBERS 12 Per Copy.

General Agents throughout the Provinces will send it to their advantage to make early application for the sale of this Map, either to GEORGE E. DESBARATS, Esq., Publisher, 312 St. Antoine street, or to J. JOHNSTON, C.E., 39 Notre Dame Street, Montreal. 6-14 ft

DR. RADWAY'S SARSAPARILLIAN RESOLVENT.—THE GREAT BLOOD PURIFIER.

Every drop of the Sarsaparillian Resolvent communicates through the Blood, Sweat, Urine and other fluid, and juices of the system the visco of life, for it repairs the wastes of the body with new and sound material. Scrofula, Syphilis, Consumption, Glandular Disease, Ulcers in the Throat, Mouth, Tumors, Nodes in the Glands, and other parts of the system, Sore Eyes, Strumorous Discharges from the Ears, and the worst forms of Skin Diseases, Eruptions, Fever Sores, Scald Head, Ring Worm, Salt Rheum, Erysipelas, Ache, Black Spots, Worms in the Flesh, Tumors, Cancers in the Womb, and all Weakening and Painful Discharges, Night Sweats, Loss of Sperm, and all wastes of the Late Principle, are within the curative range of this wonder of Modern Chemistry, and a few days' use will prove to any person using it for either of these forms of disease its potent power to cure them. If the patient, daily becoming reduced by the wastes and decomposition that is continually progressing, succeeds in arresting these wastes, and repairs the same with new material made from healthy blood, and this the Sarsaparillian will and does secure, a cure is certain; for, when once this remedy commences its work of purification and succeeds in diminishing his loss of wastes, its repairs will be rapid, and every day the patient will feel himself growing better and stronger, the food digesting better, appetite improving, and the flesh and weight increasing.

Not only does the SARSAPARILLIAN RESOLVENT excel all known and remedial agents in the cure of Chronic, Scrofulous, Constitutional and Skin Diseases, but it is the only positive cure for

KIDNEY AND BLADDER COMPLAINTS, Urinary, and Womb Diseases, Gravel, Diabetes, Dropsy, Stoppage of Water, Incontinence of Urine, Bright's Disease, Albuminuria, and in all cases where there are brick-dust deposits, or the water is thick, starchy, mixed with substance like the white of an egg, or threads like white silk, or there is a morbid, dark, bilious appearance, and white bone-dust deposits and when there is a prickling, burning sensation when passing water, and pain in the Small of the Back and along the Loins. Sold by all Druggists. 6-17 xx

TRAVELLERS' DIRECTORY.

We can confidently recommend all the Houses mentioned in the following List.

NEW YORK. THE GILSEY HOUSE, on the European plan, corner Broadway and 25th Streets. BREELIN, GARDNER & Co., Proprietors. 5-26 zz

CALT, ONT. COMMERCIAL HOTEL, HENDERSON DIXON, Proprietor.

OTTAWA. THE RUSSELL HOUSE, JAMES GOUIN.

PORT ELGIN. NORTH AMERICAN HOTEL, WM. ALLEN, Proprietor.

QUEBEC. THE CLARENDON, WILLIS RUSSELL & SON.

ST. JOHN, N.B. VICTORIA HOTEL, B. T. CROGAN.

TEESWATER, ONT. KENT HOUSE, J. E. KENEDY, Proprietor.

TORONTO. THE ROSSIN HOUSE, G. P. SHEARS, Lessee and Manager. THE QUEEN'S HOTEL, CAPT. THOS. DICK.

WALKERTON, ONT. HARTLEY'S HOTEL, MRS. E. HARTLEY, Proprietor.

PHOTOGRAPHER.

G. B. MURRAY, PHOTOGRAPHER, G. BROCKVILLE, ONT., has refitted his rooms and is now prepared to take all kinds of Photographs. Studio—Opposite Victoria Hall, Main Street. 5-14ft

CHEMICAL FOOD AND NUTRITIVE TONIC.

Without Phosphorus no thought, say the Germans, and they might add, no action, since Phosphorus and its compounds are known to be the motive power of the nervous and muscular system. They constitute more than half the material of the human body, being found in every tissue, and their presence is absolutely essential to nutrition, as they promote the conversion of albumen in the food into fibrine, which is the vitalizing agent of pure, healthy blood. They are now coming into universal use in Europe and America in the treatment of Scrofulous, Consumptive and Venereal diseases, which are caused by impoverished or poisoned blood; and in diseases of women suffering from irregularities, obstructions, and exhausting discharges, in pale puny children, and that condition of nervous and physical prostration resulting from bad habits, excessive use of stimulants and tobacco, and all that train of evils known as a fast life. The great reliability and promptness in its effects in immediately and permanently restoring the devitalized constitution, has made DR. WHEELER'S COMPOUND ELIXIR OF PHOSPHATES AND CALIFORNIA a great favorite with the Physicians and public. Sold at \$1.00. 4-26 zz

CUSTOMS DEPARTMENT.

OTTAWA, 19th November, 1872. Authorized discount on American Invoices until further notice: 12 per cent. R. S. M. BOUCHETTE, Commissioner of Customs.

MARAVILLA COCOA.

OPINIONS OF THE PRESS. "Those who have not yet tried Maravilla will do well to do so."—Morning Post. "It may justly be called the PERFECTION OF PREPARED COCOA."—British Medical Journal.

MARAVILLA COCOA.

The Globe says: "TAYLOR BROTHERS' MARAVILLA COCOA has achieved a thorough success, and supercedes every other Cocoa in the market. Entire solubility, a delicate aroma, and a rare concentration of the parent elements of nutrition, distinguish the Maravilla Cocoa above all others. For Invalids and Dyspeptics, we could not recommend a more agreeable or valuable beverage."

HOMOEOPATHIC COCOA.

This original preparation has attained a world-wide reputation, and is manufactured by TAYLOR BROTHERS, under the ablest HOMOEOPATHIC advice aided by the skill and experience of the inventors, and will be found to combine in an eminent degree the purity, fine aroma, and nutritious property of the FRESH NUT.

SOLUBLE CHOCOLATE.

MADE IN ONE MINUTE WITHOUT BOILING.

THE ABOVE ARTICLES are prepared exclusively by TAYLOR BROTHERS, the largest manufacturers in Europe, and sold in tin-lined packets only, by Storekeepers and others all over the world. Steam Mills, Brick Lane, London. Export Chicory Mills, Bruces, Belgium. 5-19 zz

"The Canadian Illustrated News,"

A WEEKLY JOURNAL of current events, Literature, Science and Art, Agriculture and Mechanics, Fashion and Amusement. Published every Saturday, at Montreal, Canada, By Geo. E. Desbarats.

Subscription, in advance, \$4.00 per an. Single Numbers, 10 cents. Postage: 5 cents per quarter, payable in advance by subscribers at their respective Post Offices.

CLUBS:

Every club of five subscribers sending a remittance of \$20, will be entitled to Six Copies for one year, mailed to one address. Montreal subscribers will be served by Carriers. Remittances by Post Office Order or Registered Letter at the risk of the Publisher. Advertisements received, to a limited number, at 15 cents per line, payable in advance.