

Porococcus tinctorius Ckll.

Fig. 12.

Habit.—Adult female entirely enclosed within a test of hard, black secretion which is roughly spherical in form.

Morphological characteristics.—Length (flattened on slide) 2.5 mm. In form the body (flattened on the slide) is almost circular except for the fact that the last four abdominal segments, together being much narrower than the remainder of the body, form a sort of tail (Fig. A). The terminal segment bears the rather large and heavily chitinized anal ring, which is flanked on each side by a large, chitinized area bearing two or three conical spines and a few

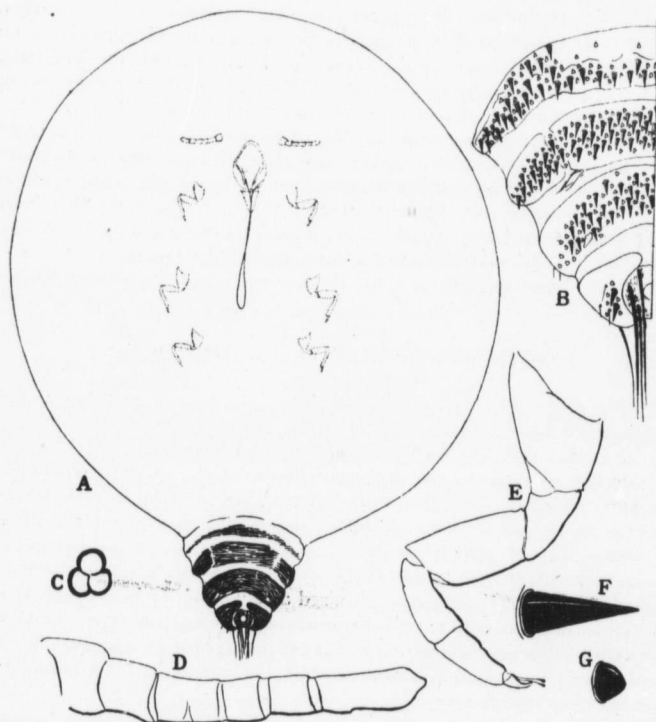


Fig. 12.—*Porococcus tinctorius* Ckll. A, general aspect of body; B, dorsal aspect of last four abdominal segments; C, trilocular pore; D, antenna; E, leg; F, type of spine occurring on dorsum of last four abdominal segments; G, type of spine on the dorsum anterior to the last four abdominal segments.

pores, these areas nearly meeting at the median line of the dorsum and extending slightly on to the ventral side. The next three segments each bear a transverse, heavily chitinized area beset with numerous conical spines of the type shown in Fig. F and pores (Fig. B). Over the remainder of the body the spines are rather few and are much smaller, short and tubercle like (Fig. G). Tri-