

**A Railway to Liverpool.**

Maj. W. H. Kent is the projector of the "American Asiatic Railway via Behring Straits." From his account the following points are taken: The line starts from the proposed western terminus of the Canadian Pacific at Fort Snopson, in latitude 54.40, near the southern boundary of Alaska, for which a climate as mild as New Jersey is claimed, together with great national wealth. The straits, 36 miles wide are to be crossed by transfer boats, temporarily, ultimately by a tunnel. At Valdivoski, an important port near the mouth of the Amoor, it will connect with the Russian system of Siberian railways, now being pushed through. Thus an all rail route from Boston to Liverpool will be formed, which will doubtless soon drive the Guion's and Cunarder's to the wall.—*Commercial Bulletin.*

**General Notes.**

The following quantities of grain are in store at Chicago. Wheat, 6,674,199 bush.; corn, 1,993,355 bush.; oats, 519,739 bush.; rye, 161,063 bush.; barley, 123,535 bush.

There are 3,685 paper mills in the world which turn out annually 1,904,000,000 pounds of paper. Half of this is used in printing generally, while 600,000,000 pounds are used for newspapers. An average of eleven and a half pounds is used by every Englishman, and ten and a quarter pounds by every American.

The Hudson River Tunnel about which so much was said a few years ago, and in undertaking the construction of which upwards of \$1,000,000 was expended, has long since been abandoned, and, very likely, forever. The company met with almost insurmountable difficulties from the start. The excavation that was made is full of water.

**N. BAWLF,**

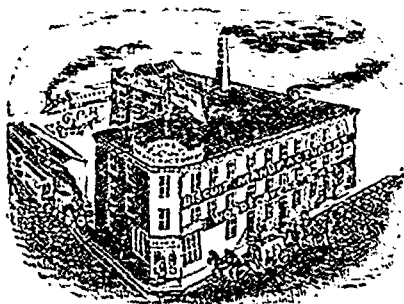
WHOLESALE DEALER IN

**Grain, Flour and Feed**

Special attention given to

**GRAIN EXPORTS.**

Cor. Princess & James St. West, **WINNIPEG**



Manufacturers of

**BISCUIT—every variety. Brooms. Coffee & Spices. Self-Raising Flour.**  
The Trade on supply, and on best terms. Send for Price List.

**WOODS, OVENS & CO.,**

Factory and Office—Corner Higgins, Fonseca and Argyle Streets, Winnipeg.

G. F. CARRUTHERS.

J. H. BROCK.

**CARRUTHERS & BROCK,  
MONEY TO LOAN,  
Fire and Marine Insurance Agency,**

ESTATES MANAGED. RENTS COLLECTED.

A Large Assortment on hand of

**J. & J. TAYLORS' SAFES AND VAULT DOORS.**

Office: Cor. McDermott St. East & Rorie St., **WINNIPEG.**

**OSLER, HAMMOND & NANTON,**

3 BANNATYNE STREET EAST,

**WINNIPEG.**

**OSLER & HAMMOND,  
TORONTO.**

(Members Toronto Stock Exchange.)

**Financial Agents**

And dealers in Railway and Municipal

**DEBENTURES.**

Correspondence Invited.

E. B. OSLER. H. C. HAMMOND. A. M. NANTON

HENRY PELLATT. HENRY MILL PELLATT.

**Pellatt & Pellatt,**

STOCK BROKERS,

46 KING ST. EAST, TORONTO.

Members Toronto Stock Exchange.

**HUDSON BAY CO.'S SHARES, ETC.**  
Bought and Sold for cash or on margin.

ORDERS BY LETTER OR TELEGRAPH  
Receive prompt attention.

**ROBERT ADAMSON,**

ASSIGNEE-IN-TRUST,

Room No. 5, Hingston Smith Block

Corner of Main and Lombard Streets,

**WINNIPEG.**

Assignments in Trust taken for  
the benefit of Creditors.

**MONEY TO LOAN on Mortgage on  
Improved City & Farm Property.**

The Sale of Municipal Debentures and  
Stocks Negotiated.

**HENRY, SNYDER & CO.,  
PACKERS,**

And Wholesale Dealers in Canned Goods, Jams, Jellies,  
Fruits, Vegetables, Meats, Pickles, &c., &c.

Packing House and Head Office 121 & 123 Front St. East  
**TORONTO, ONT.**

Highest Awards and Medals at Exhibitions of 1883

**Manitoba Mortgage & Investment Co**

CAPITAL (LIMITED) - \$2,500,000.

LOCAL ADVISORY BOARD.

Hon. C. P. Brown, M.P.P., Minister of Public Works.  
C. E. Hamilton, Esq., Barrister, of Messrs. Atkins, Culver  
& Hamilton.

A. P. Eden, Esq., Land Commissioner of the Manitoba  
and Northwestern Railway Company, Winnipeg.  
Captain Lewis, of Messrs. Lewis & Kirby, Financial and  
Insurance Agents.

R. H. Hunter, Esq., Winnipeg.  
W. Hespeler, Esq., German Consul, Winnipeg.

This Company has been formed expressly for the pur-  
pose of lending money on the security of Real Estate in  
Manitoba. Advances made on the security of farm and  
city property at lowest current rates.

OFFICES - *Margrave Block, Main Street.*

**H. R. MOFTON,**

KILLAM & HAGGART, Solicitors. **Manager.**

**MONEY TO LEND.**

**MORTGAGES & DEBENTURES PURCHASED.**

**Western Canada Loan & Savings Co.**

HEAD OFFICE, TORONTO, WALTER S. LEE, Manager.

**WINNIPEG BRANCH, - 373 Main Street,**

**F. B. ROSS,**  
Manager Winnipeg Branch.

**MONEY TO LOAN.**

**\$100,000**

To lend at Lowest Current Rates.

Apply

**A. MACNAB & SON,**

Office, Dundee Blk., Main St., Winnipeg.

**OGILVIE MILLING CO.**

Mill at Point Douglas.

Capacity - - - 750 Barrels per day.

OFFICE:—Corner King and  
Alexander Streets, Winnipeg.

A Full Stock of Patent Hungarian, Strong  
Bakers' and Spring Extra Flour; Oatmeal, Pot  
and Pearl Barley, Graham Flour, Cracked  
Wheat, Bran, Shorts, Ground Feed, Oats, Bar-  
ley.

Wheat buyers at all Shipping C.P.R. Stations.