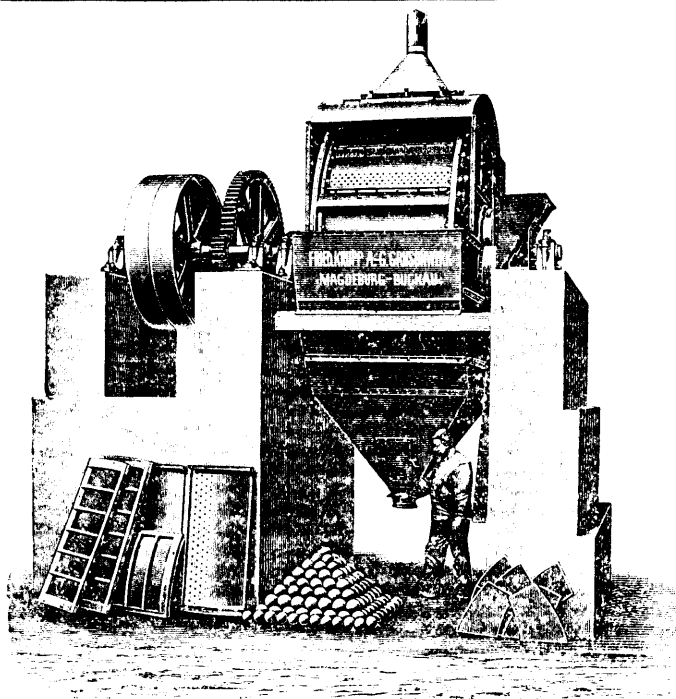


# FRIED. KRUPP A.-G. GRUSONWERK Magdeburg-Buckau (Germany)



## SPECIALTY BALL MILLS

For Dry and Wet Crushing

### ADVANTAGES:

Continuous working.  
Immediate automatic discharge of the product as soon as the desired degree of fineness has been attained.

### Exceedingly uniform product.

Hardest ores ground to any degree of fineness.  
Minimum wear and tear.  
Easy access to the interior of the large grinding drum.  
Require little attention.

Moderate power, with high capacity.

Write for Catalogues.

SOLE REPRESENTATIVES FOR CANADA

**JAS. W. PYKE & CO.,** Sovereign Bank Building, Montreal

# "STEPHEN HUMBLE'S"

## IMPROVED PATENT SAFETY DETACHING HOOK

With Automatic Lowering Arrangement.

In use throughout the Mining World, owing to its Simplicity, Certainty of Action and Security. For the prevention of accidents by over-winding at Mine Shafts and Furnace Hoists.

7,000 IN USE

SOLE MANUFACTURER:

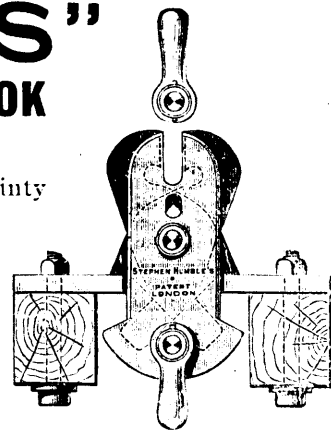
## STEPHEN HUMBLE

Westminster Chamber, 9, Victoria Street, London, S. W.



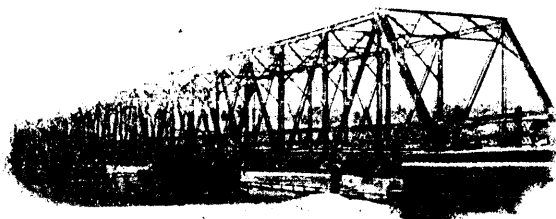
WORKING ORDER

Telegrams—"STEPHEN HUMBLE, WESTMINSTER."



DETACHED AND SUSPENDED

## STEEL



Buildings,  
Bridges,  
Roof Trusses,  
Viaducts, etc.

Designed, fabricated, and erected.

THE LOCOMOTIVE AND MACHINE COMPANY OF MONTREAL, LIMITED

IMPERIAL BANK BUILDING, MONTREAL, CANADA