

## Bird's Custard Powder,

(in Packets and Tins).

### JELLIES.

Pure Gold  
Freeman's  
Easy Jell  
Surprise  
Guava  
Aspic  
Calves' Feet  
Junket Tablets

### FRUITS in Tins.

Strawberries  
Raspberries  
Blackberries  
Apricots—Sliced  
Peaches—Sliced  
Pears—Extra  
Egg Plums  
Cherries  
Sliced Pineapple—  
Extra.

### MOIR'S CHOCOLATES and CAKES.

Cocoa and Milk  
Cocoa & Milk Powder  
Chocolate & Milk  
Coffee Essence

### BISCUITS.

Peek, Frean,  
Huntley & Palmer,  
Jacobs', Carr's.

**BOWRING Bros., Limited,**  
GROCERY.

## ATTENTION, FISHERMEN! TOWER'S FISH BRAND WATERPROOF OILED SUITS

are made for you—the men who need the best in waterproof clothing. They are sized big for comfort and strong at every point.

Satisfaction guaranteed



A. J. TOWER CO.  
BOSTON, MASS.

PETERS & SONS, ST. JOHN'S, Agents



**Hotels, Restaurants &  
Boarding Houses  
BUY 'HILLSDALE' SLICED  
Pineapple,  
IN GALLON TINS.  
AT YOUR GROCERS.**

**Libby, McNeill & Libby.**

mar18.1yr

## Beef, Pork, Spare Ribs!

### HEADQUARTERS:

100 barrels Fat Back Pork,  
180 barrels Ham Butt Pork,  
50 barrels Sinclair's Family Pork,  
100 barrels Special Plate Beef,  
50 barrels Special Family Beef,  
100 barrels Lincoln Plate Beef,  
100 barrels New York Boneless Beef.  
Choice New Stock at Lowest Prices.

**GEO. NEAL, Ltd.**

## Bedrooms & Beds

There's nothing more important to the bedroom than the Bed itself, is there? From the point of usefulness or ornament it ranks first. Does your Bed suit your taste? Does it harmonize with your room? Does it give you the sleep-comfort you need? No? Well, then it's time to discard it and get another, quick.

We are showing All-Brass, Brass and Enamel, and All-Enamel Beds in all sizes and very fine designs. Each and all of which Beds can be fitted with Springs and Wool or Felt Mattresses if desired.

Prices quoted on request.

**U. S. PICTURE & PORTRAIT CO.**

## Ladies' Black Hose, only 25c. pair.

Exceptional Value.

Just received another splendid shipment  
LADIES' SILK BLOUSES and CHILDREN'S  
WHITE DRESSES—Silk, Voile and Or-  
gandie.

**SMITH'S Dry Goods Store**  
Rawlin's Cross, St. John's.



**You Need  
Good Feet  
to Play  
Good  
Ball**

In fact, you need good feet to enjoy life at all. You can have good feet, without a hurt or a discomfort, by letting our expert help you.

There is a  
**Dr. Scholl**  
Appliance or Remedy for Every Foot Trouble

If you have even the slightest trouble with your feet, you are enduring useless discomfort. Correct your foot defects with Dr. Scholl's Appliances, just as you correct eye defects with glasses.

**Get Foot Comfort  
Here**

We are experts at fitting the Dr. Scholl's Appliances and we have studied feet and foot troubles. Many have already gained comfort through coming here. Why don't you do it? No charge for advice.

**PARKER & MONROE, LIMITED,  
The Shoe Men.**

**"Watch Your Feet"**

## SILVERWARE!

Bread Trays  
Roll Trays  
Fruit or Confection  
Basket.  
Baking Dish  
Casserole  
Entree Dishes  
Scup Tureen  
Cake Dishes  
Cake Plates.

Bread Board  
Ron Bon  
Butter Dish  
Sandwich Trays  
Dessert Sets  
Trivets  
Waiters  
Marmalade  
Sugar Dish  
Spoon Holder  
Tea Sets.

Also HOMES & EDWARDS' FLATWARE.  
The name of Homes & Edwards is a sure guarantee of "Quality".

**D. A. McRAE, Jeweller.**

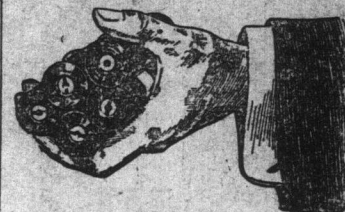
## Clear Out Sale!

Here's a golden opportunity to secure genuine bargains in  
CHILDREN'S and MISSES'

**White Muslin Dresses.**

We have a few dozen left over and have marked them down to real clear-out prices.

**WILLIAM FREW, Water St.**



## Your Kodak

AND OUR FINISHING  
DEPARTMENT

are a combination that make for results.  
Every strip of film is developed and every print is made by experts who have the one idea of "results" in mind—just as you have when you click the shutter. Bring your film to

## Tooton's

THE KODAK STORE,  
Phone 131. 309 Water St.

### STEARN'S

### MORNING SALT

makes a sparkling, agreeable, laxative drink. Banishes that dull morning headache, stomach uneasiness, etc.

Stearn's Morning Salt starts you right for a day of work or pleasure. Get a bottle to-day.

Price 60c. bot.

**PETER O'MARA,**  
The Druggist.

"In business for your health."

## The Maritime Dental Parlors

THE HOME OF GOOD DENTISTRY.

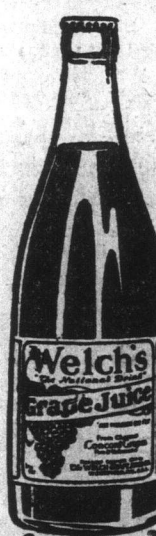


Expert Work in all Branches.  
We are specialists in extraction. Our improved method renders the extraction of teeth absolutely painless. We also make the best artificial teeth in Newfoundland, at the most reasonable rates.

Painless Extraction . . . . . 50c.  
Full Upper or Lower Sets, \$12.00 and \$15.00  
P. O. Box 1220. Phone 62.

**M. S. POWER, D.D.S.**  
(Graduate of Philadelphia Dental College, Garretson Hospital of Oral Surgery, and Philadelphia General Hospital.)  
176 WATER STREET.  
(Opp. M. Chaplin's.) w.t.

CALL FOR IT AT BALLY HALLY  
AFTER A ROUND OF GOLF.



Served Iced with Aerated Waters or just neat.

The Grocer and the Refreshment Store you deal with can also supply Welch's.

Be sure you do not get a substitute, for you can tell the world there's no Grape Juice as good as Welch's.

**P. E. Outerbridge,**  
Sole Agent,  
King's Rd., cor. Gower St.  
Telephone 60.

**EMPIRE HALL** (formerly Blue Puttee Hall), cor. Gower Street and King's Road, may be hired for small dances or meetings. Rates: Evenings \$13 up. Afternoons \$8. Apply W. F. POWER, Manager. Jan2.1yr

**MINARD'S LINIMENT RELIEVES DISTEMPERS.**

## Reid-Newfoundland Company.

## Freight Notice!

**Green Bay Steamship Service.**

Freight for the S.S. 'Home' will be accepted at the Freight Shed to-morrow, Thursday, from 9 a.m.

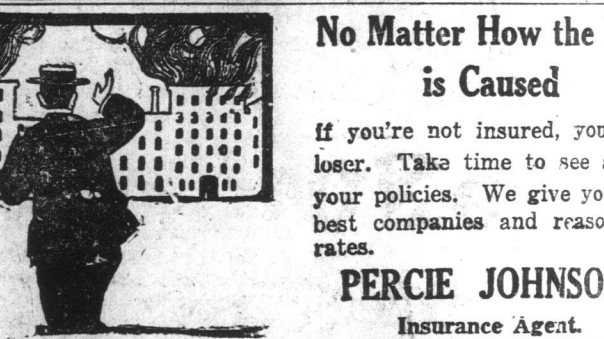
## Stoves & Ranges!

We are now showing a large assortment of Cooking Stoves and Ranges including the well known

**"Modern Alaska Range"**  
and  
**"OUR OWN COOK"**

**JOHN CLOUSTON,**

140-2 DUCKWORTH STREET.  
Phone 406. P. O. Box 1243.



## No Matter How the Fire is Caused

If you're not insured, you're a loser. Take time to see about your policies. We give you the best companies and reasonable rates.

**PERCIE JOHNSON,**  
Insurance Agent.

## Unusual Investments!

The recent severe decline in the securities market furnishes another golden opportunity to wideawake investors, because at present prices some of America's most seasoned investments show an income yield of 10 per cent and over.

Many stocks are on the bargain counter regardless of their great asset value and future earnings outlook, but this can only be transitory as the intrinsic worth of these stocks must be reflected in higher prices soon.

We are fully equipped to take care of any orders you wish to place on any of the leading stock exchanges and can assure you prompt and attentive handling of same.

**J. J. LACEY & COMPANY LIMITED,**  
CITY CHAMBERS.

## Rubber Heels!

All sizes Ladies' and Gents' Black, White & Tan. Special Prices to the trade.

**R. Templeton.**