

# DRIED FRUIT.

The undermentioned at  
**LOWEST PRICES.**

3 CROWN CALIF. RAISINS—50 lb. boxes.  
SEEDED CALIF. RAISINS—1 lb. cartons.  
EVAPORATED APRICOTS—25 lb. boxes.  
EVAPORATED PEACHES—25 lb. boxes.  
EVAPORATED PRUNES—25 lb. boxes.  
EVAPORATED APPLES—50 lb. boxes.  
PACKAGE CURRANTS—1 lb. cartons.  
PACKAGE DATES—1 lb. cartons.

**F. McNAMARA,**  
Queen Street.



**NO MATTER HOW THE FIRE IS CAUSED**  
if you're not insured, you're a loser. Take time to see about your policies. We give you the best companies and reasonable rates.

**PERCIE JOHNSON,**  
Insurance Agent.

## LIQUIDATORS' NOTICE!

The Stock of Lumber of the Empire  
Woodworking Company, Ltd.,

Now in Liquidation is for sale at Hill of Chips.  
Stock comprises:

SPRUCE JOISTS—2 x 7 and 2 x 8.  
SCANTLING—5 x 5 to 9 x 9.  
JUNIPER PLANK—1200 feet.  
BIRCH NEWELS—4 x 4 and 6 x 6; over 24,000 feet.

MATCHED SPRUCE—No. 2, 6000 feet.  
PINE—1 1/2 in., 1000 feet.  
PALINGS—900.

PINE—All grades and sizes, over 35,000 feet.  
MOULDINGS—All kinds.

STOCK DOORS.  
PARIOD ROOFING, 10 rolls, and a quantity  
REXITE ROOFING.

Stock as per inventory is over 225,000 feet,  
will be sold in block or smaller quantities.

The stock of Lumber for sale at Davey's  
Yard, Duckworth Street, comprises 182,000 feet  
of good quality Pine Lumber in sizes 1, 1 1/2, 2  
and 3 inch. Will be sold in block or smaller  
quantities.

**Terms of Sale—CASH.**

JOHN DAVEY and  
THE EASTERN TRUST COMPANY,  
april 13, 1917. Liquidators.

Just Received a large supply of  
**Hodder & Stoughton's**  
35c. Novels,

Containing some of the best books  
ever published. Come in and see  
them.

**GARLAND'S Bookstores**  
177-9 Water Street.

MINARD'S LINIMENT RELIEVES  
RHEUMATISM

**The Newfoundland Year Book.**

Just off the press, full of valuable  
and authentic information relating to  
Newfoundland Public Offices, Institutions,  
Banks, etc., of the Colony. Only  
42c. post paid.

**GARLAND'S Bookstores**  
177-9 Water Street.

**J. J. St. John.**

In Stock and to  
Arrive:

800 brls. Flour—All Choice  
Brands.  
150 bags Yellow Corn.  
100 bags Corn Meal.  
200 bags Bran.  
150 bags Black Oats.  
50 brls. Granulated Sugar.  
30 brls. Ham Butt Pork.  
25 brls. Libby's S. P. Beef  
10 brls. Pork Loins.  
50 cases Sunlight Soap—  
12 oz. bars.  
25 cases C. C. Beef—6 lb.  
tins.  
25 cases C. C. Pork—6 lb.  
tins.  
250 gross Seagod Matches.  
30 barrels Holyrood Cab-  
bage.

**J. J. St. John.**

Duckworth St. & LeMarch-  
ant Road.

### Counter Check Books

CHEAPER THAN YOU CAN BUY  
THEM—"HOME MADE".

Counter Check Books, an exact  
duplicate of the book you import every  
year and use in your store every  
day, at 5 to 15 per cent. less than  
you can import them for. We make  
them and we make all other Loose  
Leaf Forms. Fifty Books or fifty  
thousand books, any shape, size or  
quantity that you now get at 5 to 15  
per cent. less than you are paying for  
them, and you keep the money in  
circulation in your own country,  
where it comes round to you every  
year, spent by the workmen who are  
paid to turn out the books.

We have just perfected arrange-  
ments in our Printing and Binding  
Departments that will enable us to  
make it unnecessary for you to im-  
port any more Counter Check Books.  
Ask us to show you samples and  
quote you prices on the "Home Made"  
Counter Check Book.

**DICKS & CO., LTD.**

Biggest, Brightest, Busiest and Best  
Book, Stationery and Fancy Goods  
Store in Newfoundland.

### THE GIFT OF THE GRAPE.

**Red Wing  
Grape Juice**

Is unexcelled for use in punch,  
on Grape-fruit for puddings and  
numerous other unusual dairy  
dishes which are suggested in  
our free booklet. Send for it.

**BAIRD & CO.,**

Agents.  
181 WATER ST.  
P. O. Box 157.

### The "ONOTO"

Self-Filling Safe y  
Fountain Pen,  
BRITISH MANUFACTURE.

In the Onoto you really have got a  
Fountain Pen which you can carry  
upside down in your pocket without  
a drop of ink leaking out. A turn of  
an Onoto Pen seals it absolutely and  
renders it safe to carry in any posi-  
tion. Further, the Onoto fills itself  
in a flash from any ink supply, and  
by the arrangement which enables  
you to render it leak-proof you can  
regulate the ink supply to suit your  
own particular requirements. The  
Onoto stands alone as the one really  
Self-Filling Fountain Pen.

It's the Pen that fills itself in 5  
seconds and never leaks—it's British.  
REMEMBER THE NAME—"ONOTO".  
Prices \$1.50 and \$2.75.

**Garrett Byrne,**  
Bookbinder & Stationer.

JUST REBINDER.

**The Newfoundland Year Book.**

This book needs no introduction in  
Newfoundland; it is indispensable to  
the business man as well as the pri-  
vate library. You cannot afford to be  
without one. Only 40c.; 2c. extra for  
postage.

**GARLAND'S Bookstores**  
177-9 Water Street.

MINARD'S LINIMENT CURES DAN-  
DRUFF.

### Rossley's British Theatre.

BY POPULAR DEMAND.

Last Three Days of Allies Revue.

TUESDAY NIGHT—COUNTRY STORE—Doors open 6.30 p.m.  
THURSDAY—CHILDREN'S NIGHT.

Another Special Programme and the  
Latest Pictures.

NOTE—In preparation, Great Minstrel—First Part, Second  
Part—The Old Plantation. Also in preparation, spectacular  
Indian production. The whole Company are having beautiful  
Indian Costumes made, and there's no doubt it will be a very  
novel production. All new songs and Indian dances.

### 5c. The Crescent Picture Palace. 5c.

EVERY AFTERNOON 2.15—EVERY NIGHT 7.15.

Presenting Neil Craig and Ernest Maupain in

### "The Way of Patience."

An Essanay Quaker drama produced in 3 reels.

"VERNON HOWE BAILEY'S SKETCH-BOOK OF LONDON"  
and "QUEBEC WINTER SPORTS AND PASTIMES"—Two  
interesting topical films.

Bad Duncan and Ethel Teare in "GUARDIAN ANGELS"—A great  
Kalem comedy.

PROFESSOR MCCARTHY playing the Newest and Best Music—  
Drums and Effects.

## Choice Groceries

<b>MEATS</b> (In Glass). Ox Tongues. Potted Meats. Cooked Ham. Sausages. Lamb's Tongues. Bacon.	<b>FRUITS</b> (In Glass). Sliced Pineapple. Peaches. Apricots. Greenhouses. Cherries. Strawberries. Raspberries. Pears.	<b>SOUPS</b> (In Glass). Lemon Chard. Bengal Chutney. Pan Yan Pickles. Queen Olives. Capers. Browning for Gravies.
--	--	--

<b>CHEESE</b> MacLaren's. Tasty, in pks., 10c. Elkhorn, tins, 20c. and 30c. Canadian.	<b>VEGETABLES</b> (In Glass). Tomatoes. Tiny Peas. Little Gem Peas. Sweet Corn. Small Beet. Petit Pois Ex Fins. Haricot Verts. Champignons.	<b>Table Raisins.</b> Dromedary Dates. Washed Figs. Calmar Figs. Shelled Nuts. Chrysalis Cherries. China Ginger. Guava Jelly. Red Currant Jelly. Leaf Gelatine. Bird's Custard Powder. Eng. Thick Cream.
--	--	--

**BOWRING BROTHERS, Limited,**  
Grocery Department.

PHONE 332. PHONE 332.

## A SNAP!

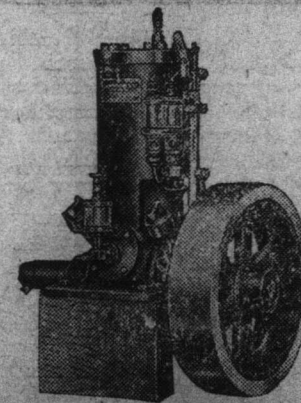
We offer for immediate delivery,

One 1917

**OVERLAND AUTOMOBILE,**

Slightly used; Guaranteed  
in perfect order.

**T. A. MACNAB & Co.**



**LATHROP**

Make and Break  
Kerosene Engines,  
Strong, Heavy and Reliable.  
Also

Gray, Ferro and Fulton

The Fulton is self-sparking;  
no coils or batteries required.

SCRIPPS 4 CYCLE.

The standard in 4 cycle engines.

**A. H. MURRAY, St. John's, Agent.**

Advertise in the Telegram

## REID-NEWFOUNDLAND COMPANY.

### WATER STREET STORES DEPARTMENT.

The well-known headquarters for MOTOR  
ENGINES, MOTOR SUPPLIES, GASOLINE  
and MOTOR OILS.

Our COLUMBIA CELLS and MULTIPLE  
BATTERIES give results unheard of before.

Call or send for particulars.

**Reid-Newfoundland Co.**

### Opening Announcement!

#### OUR IDEA!

We beg to announce that we are now open to see  
you about that Spring Suit you are wanting, and as  
our idea is to have our suits made in the Semi-Ready  
way, you can be assured of a good fit and the price will  
be considerably less than what you are paying now.  
Quality of goods, trimmings, workmanship and  
style guaranteed. See us soon.

**Semi-Ready Clothing Co.**

S. FREHLICH,  
Telegram Building.  
april 12, 1917

We have thought that  
possibly

### The Weather Might Dry Up

if we mentioned that we can have you properly cloaked  
so that you will not fuss about even the present weath-  
er. We have at present in stock a splendid assortment  
of

## Ladies' Shower Coats and Raglans,

in the smartest styles and best quality cloths  
but still

At Prices that Defy any  
Competition.

We sincerely trust that this weather may not con-  
tinue any longer, but still if it becomes fine this is the  
best chance to buy a good Shower Coat you are going  
to have for a long time, and you know that in this  
country you must always be prepared for the Rainy  
Day.

**Henry Blair**

### Emerson Pianos.

The Emerson Piano is too well known in St. John's to need  
any words of praise; it has sung (with its beautiful singing  
quality) its own praises for the past 35 years. Come see and  
hear and be convinced.

**CHARLES HUTTON,**

Sole Agent Newfoundland.

### EIGHT PAIR

WEATHER  
TORONTO, Ont.,  
winds, fair and  
an Thursday.

Drink Welch's

### VOLUME

**THE PEOPLE'S**  
**AUCTION**

### AUCTION

At the British  
To-Morrow

19th Inst., at

a quantity of Home  
and Effects, removal  
of sale, com

1 superior walnut  
in hair cloth; 3  
tables, 6 mahogany  
chairs, upholstered  
chairs, 6 oak chairs,  
steads and mattress  
sideboard, 2 oak  
nut cabinet with  
some drawing room  
ornaments, glass  
carpets and general  
large ditto, suitable  
or ice cream parlor  
mahogany bookcase  
combined and other  
furniture; 1 large cool-  
range, 3 sides upho-  
And by private sale  
count Register.

P. C. O'DR

april 11

### PRIZE

### COMPETITION

We will present  
interesting and  
card game, pull  
The Welch  
Company to the  
ty-four boys or  
15 years of age  
us what we con-  
sider the best  
answer to the  
ing question:

Why is Welch's

Juice the

Drink only

Market?

Address your

THE WELCH

GRAPE JUICE

P. O. Box 114.



**DENTAL WORK**

### The Marine

### Dental Par

THE HOME OF GOOD  
We do all branches of  
the most skillful and modern  
specialize in extraction  
and improved method  
exclusively by us. Our  
tection. Crown and Bridge  
Fillings at reasonable  
nation free.  
Painless Extraction  
Full Upper or Lower  
PHONE 65

**M. S. POWER**

(Graduate of Philadelphia  
lege, Garretson Hospi-  
Surgery and Phila-  
General Hospi-  
176 WATER ST.  
(opp. M. Chan-  
w.t.

### Grove Hill

THIS WEEK

CUT FLOWERS: Dan-  
anions, Sweet Pea-  
Wreaths, Crosses, W-  
quets, Floral Deco-  
shortest notice.

Phone 247. Term

**J. McNEIL**

Waterford Bridge

Phone 247

MINARD'S LINIMENT  
NEURALGIA