

INCORPORATED TORONTO SIR J. A. BOYD, K.C.M.G. PRESIDENT. 1886.

CONSERVATORY OF MUSIC

COLLEGE STREET.

DR. EDWARD FISHER, Musical Director
AFFILIATED WITH TORONTO UNIVERSITY

Facilities unequalled in Canada. Attendance of Students for past season upwards of 1,400.

SCHOOL OF LITERATURE & EXPRESSION
MRS. INEZ NICHOLSON-CUTTER, Principal.

CALENDARS MAILED ON APPLICATION

CHURCH DAY SCHOOL
Major Street, Toronto
SISTERS S. JOHN THE DIVINE
KINDERGARTEN and
ELEMENTARY DEPARTMENT

ST. MARGARET'S COLLEGE TORONTO

A HIGH-CLASS RESIDENTIAL AND DAY SCHOOL FOR GIRLS.
Preparation for Universities, Music, Art, Domestic Science, Elocution, and Physical Culture. Only teachers of the highest standing employed, and up-to-date class-room equipment. The names of ALL the teachers and their qualifications are given in the booklet which may be obtained by applying to GEORGE DICKSON, M.A., Director, (Late Principal Upper Canada College).
MRS. GEORGE DICKSON, Lady Principal.

Trinity College School,
PORT HOPE, Ont.
SPEECH DAY PROCEEDINGS
THURSDAY, JUNE 23RD.

Annual Service in the School Chapel at 8 p.m.
Preacher: The Provost of Trinity College.
FRIDAY, JUNE 24TH.
Annual Prize Delivery in the Gymnasium at 11 a.m.
Chairman: The Bishop of Toronto.

A Telegraph Operator

has pleasant work, gets good wages and rises to the highest positions. We teach it thoroughly and quickly, also railroad rules, signals, etc., and start our Graduates in telegraph service. Our school is recommended by telegraph operators and railroad officials. Write for terms and prospectus.

CANADIAN SCHOOL OF TELEGRAPHY
Cor. Queen and Yonge Streets, Toronto.

SPRING TERM FROM APRIL 5th.

A large number of new students will commence work on the above date, but if you cannot arrange to enter then you may come in at any time. We have no summer vacation. The

BRITISH AMERICAN Business College

Y.M.C.A. BLDG., TORONTO.
has a reputation for giving the most thorough and practical courses in all branches of BUSINESS and SHORTHAND work. If interested in an education THAT WILL PAY, write for free information.
W. BROOKS, Principal.

ST. ALBAN'S CATHEDRAL SCHOOL

Toronto—Incorporated

For BOARDERS and DAY Boys.
Chairman—His Lordship the Bishop.
A thoroughly qualified staff. For prospectus address
M. E. MATTHEWS, Principal.

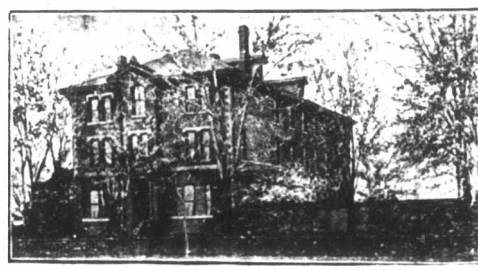
CHURCH BRASS WORK

Eagle and Rail Lecterns, Altar Vases, Ewers, Candlesticks, Altar Desks, Crosses, Vesper Lights, Altar Rails, Etc. Chandeliers and Gas Fixtures.

CHADWICK BROTHERS
(Successors to J. A. Chadwick).
MANUFACTURERS
182 to 190 King William St. HAMILTON, Ont.



Church Brass Work
MEMORIAL BRASSES
RAILS VASES
PRITCHARD ANDREWS
CO. OF OTTAWA, LIMITED
133 Spadina St. OTTAWA



"Glen Mair" RESIDENTIAL AND DAY SCHOOL FOR GIRLS
651 SPADINA AVENUE, TORONTO
Thorough English Course. Individual Attention. Pupils prepared for the Universities and for Examinations in Music and Art. Large staff of Resident and Visiting Teachers.
MISS VEALS, Lady Principal.

Bishop Bethune College, Oshawa, Ontario

UNDER THE CHARGE OF
The Sisters of St. John the Divine
Visitor, the Lord Bishop of Toronto.
Preparation for the University.

or terms and particulars apply to the SISTER IN CHARGE, or to
The Sisters of St. John the Divine
MAJOR STREET, TORONTO

School of the Sisters of the Church, 106 Beverley Street, TORONTO, Ont.

Boarding and Day School for Girls.
Visitor, The Lord Bishop of Toronto.
Terms Moderate. Vacancies for Boarders.
FALL TERM WILL BEGIN SEPT. 12th.
ADDRESS, — SISTER IN CHARGE.



ST. MONICA'S Residential and Day School for Girls.

170 Bloor St. W., - Toronto

Re-opens Thursday, Sept. 10th.
Thorough course in English, Languages, Music, Art, Elocution and Domestic Science, and Physical Culture. Prepares for University and Departmental Examinations.

Kindergarten and Primary Departments.
Teachers, Specialists in each Department.
A Home School. Extensive Grounds.
For Prospectus apply to
MISS PHILLPOTTS,
LADY PRINCIPAL.

Branksome Hall 102 Bloor St. E., Toronto.

A HIGH CLASS RESIDENTIAL AND DAY SCHOOL FOR YOUNG LADIES

Under the joint management of Miss Scott, formerly Principal of the Girls' Department of the Provincial Model School, Toronto, and Miss Merrick, formerly of Kingston.

Autumn Term begins September 7.
For circular apply to MISS SCOTT, Principal

Edgehill, Church School for Girls

WINDSOR, NOVA SCOTIA
INCORPORATED 1891.

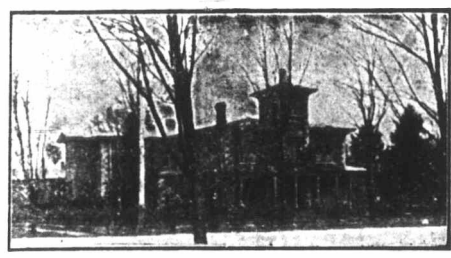
The Bishop of Nova Scotia, Chairman Board of Trustees. The Bishop of Fredericton, member of Board of Trustees, ex-officio.

Miss Lefroy, of Cheltenham Ladies' College, England, Principal, assisted by Eleven Resident Experienced Governesses from England, (five of whom are specialists in the Music and Art Departments), and one non-resident Instructor, Housekeeper, Matron and Nurse. Extensive buildings, with capacity for 100 Residents; Heated by Hot Water, Lighted by Electricity. Grounds covering eight acres, with Lawns for Tennis, Croquet, Basket Ball, Hockey, &c. School Dairy and Laundry. Preparation for the Universities.
For Calendar apply to DR. HIND.

LUXFER ELECTRO-GLAZED

Church Window Decorative Glass.
WRITE FOR PRICES.

Luxfer Prism Company, Limited,
100 King Street West, Toronto.



ST. AGNES' SCHOOL. A Church School for Girls, ELMPOOL, BELLEVILLE.

Patron—The Lord Bishop of Ontario.
Prepares for Matriculation. Conservatory of Music Examinations held at the School. Courses in Art, Physical Culture, Domestic Science. Beautiful building with all modern improvements—extensive grounds. TERMS MODERATE. For prospectus apply to
MISS F. E. CARROLL.

WESTBOURNE School for Girls

340 Bloor Street W., - TORONTO, Can.

Re-opens September 8th, 1904.

A Residential and Day School, well appointed, well managed and convenient. Specialists in each department. Affiliated with the Toronto Conservatory of Music. Dr. Edward Fisher, Musical Director; F. McGillivray Knowles, R.C.A., Art Director. For announcement and information, address the principals.

MISS M. CURLETTE, R.A.
MISS F. E. DALLAS, Mus. Bach

HIGHER EDUCATION FOR GIRLS

The Bishop Strachan School (Thirty-seventh Year)

For Calendar apply to MISS ACRES, Lady Principal, Wykeham Hall, Toronto.

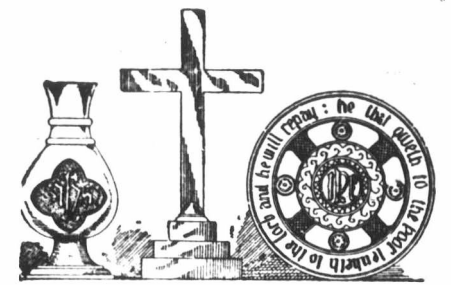
The Parkdale Church School FOR GIRLS—151 Dunn Ave.

KINDERGARTEN—FOR BOYS and GIRLS
For Calendar apply to
MISS MIDDLETON, Lady Principal.

MEMORIAL WINDOWS.

Our productions are extensively adopted.

Robert McCausland, Limited
86 Wellington St. West, TORONTO



CHURCH BRASS WORK of every description made to order on shortest notice. Designs furnished and satisfaction guaranteed.

KEITH & FITZSIMONS, LIMITED
111 King Street West, Toronto.



MEMORIALS AND DOMESTIC GLASS
DOMINION STAINED GLASS
EST. CO. 1881
54 RICHMOND ST. E. TORONTO.
Rockey & Pugh Proprietors

JONES AND WILLIS

Church Furniture Manufacturers
Metal, Wood, Stone and Textile Fabrics.
STAINED GLASS ARTISTS
43 Great Russell Street, LONDON, ENG
Opposite British Museum.
Also at Birmingham and Liverpool



THE CANADIAN NORTH-WEST HOMESTEAD REGULATIONS.

Any even numbered section of Dominion Lands in Manitoba or the North-West Territories, excepting 8 and 26, which has not been homesteaded, or reserved to provide wood lots for settlers, or for other purposes, may be homesteaded upon by any person who is the sole head of a family, or any male over 18 years of age, to the extent of one quarter section, of 160 acres, more or less.

ENTRY.
Entry may be made personally at the local land office for the district in which the land to be taken is situated, or if the homesteader desires, he may, on application to the Minister of the Interior, Ottawa, the Commissioner of Immigration, Winnipeg, or the local agent for the district in which the land is situated, receive authority for some one to make entry for him. A fee of \$10.00 is charged for a homestead entry.

HOMESTEAD DUTIES.
A settler who has been granted an entry for a homestead is required by the provisions of the Dominion Lands Act and the amendments thereto to perform the conditions connected therewith, under one of the following plans—

(1) At least six months' residence upon and cultivation of the land in each year during the term of three years.

(2) If the father (or mother, if the father is deceased) of any person who is eligible to make a homestead entry under the provisions of this Act, resides upon a farm in the vicinity of the land entered for by such person as a homestead, the requirements of this Act as to residence prior to obtaining patent may be satisfied by such person residing with the father or mother.

(3) If a settler has obtained a patent for his homestead, or a certificate for the issue of such patent countersigned in the manner prescribed by this Act and has obtained entry for a second homestead, the requirements of this Act as to residence prior to obtaining patent may be satisfied by residence upon the first homestead, if the second homestead is in the vicinity of the first homestead.

(4) If the settler has his permanent residence upon farming land owned by him in the vicinity of his homestead, the requirements of this Act as to residence may be satisfied by residence upon the said land.

The term "vicinity" used above is meant to indicate the same township or an adjoining or cornering township.

A settler who avails himself of the provisions of Clauses (2), (3) or (4) must cultivate 30 acres of his homestead, or substitute 20 head of stock, with buildings for their accommodation, and have besides 40 acres substantially fenced.

Every homesteader who fails to comply with the requirements of the homestead law is liable to have his entry cancelled, and the land may be again thrown open for entry.

APPLICATION FOR PATENT.
Should be made at the end of the three years, before the Local Agent, Sub-Agent, or the Homestead Inspector. Before making application for patent the settler must give six months' notice in writing to the Commissioner of Dominion Lands, at Ottawa, of his intention to do so.

INFORMATION.
Newly arrived immigrants will receive at the Immigration Office in Winnipeg or at any Dominion Lands Office in Manitoba or the North-West Territories information as to the lands that are open for entry, and from the officers in charge, free of expense, advice and assistance in securing land to suit them. Full information respecting the land, timber, coal and mineral laws, as well as respecting Dominion Lands in the Railway Belt in British Columbia, may be obtained upon application to the Secretary of the Department of the Interior, Ottawa, the Commissioner of Immigration, Winnipeg, Manitoba, or to any of the Dominion Land Agents in Manitoba or the North-West Territories.

JAMES A. SMIRT,
Deputy Minister of the Interior.

N.B.—In addition to Free Grant Lands to which the regulations above stated refer, thousands of acres of most desirable lands are available for lease or purchase from railroad and other corporations and private firms in Western Canada.

J. YOUNG
THE LEADING Undertaker and
359 YONGE ST. Embalmer
Telephone 679.