

PUBLISHED EVERY WEEK. \$1.50 PER YEAR.

THE FARMER'S ADVOCATE

AND HOME MAGAZINE

PERSEVERE AND SUCCEED

FOUNDED 1880

AGRICULTURE, STOCK, DAIRY, POULTRY, HORTICULTURE, VETERINARY, HOME CIRCLE.

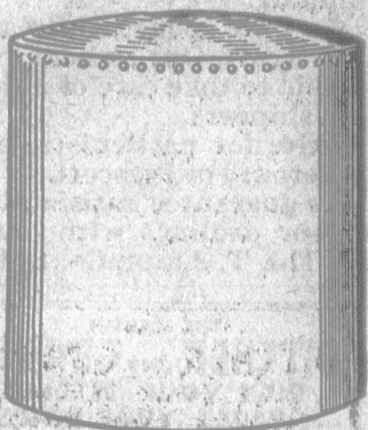
ENTERED IN ACCORDANCE WITH THE COPYRIGHT ACT OF 1915.

VOL. LII.

LONDON, ONTARIO, JULY 19, 1917.

No. 1295

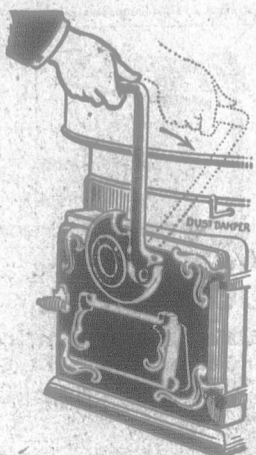
You'll Appreciate These Special Features of McClary's Sunshine FURNACE



Electrically-welded Steel Dome and Radiator



The Two-piece Firepot with Straight Sides



"Rocking Down" the Ashes

Look at the heavy Steel Dome and Radiator. This is not riveted together, but electrically welded to insure a permanent gas and dust-proof joint.

Note the wide, Double Feed Doors, which facilitate easy firing. Also note the conveniently-located Water Pan.

Consider the two-piece Firepot—made of semi-steel, which is impervious to the destroying action of sulphur fumes. Its straight sides prevent ashes from accumulating, while its two-piece construction allows for extreme expansion and contraction without cracking.

The easy "rocking" device for shaking down the ashes; the three-sided Grate Bars which grind up heavy clinkers with ease, and the Dust Flue, which sends all the fine ash-dust up the chimney, are other McClary features you'll appreciate.

All of these special features are the result of years of patient thought, experiment and practice—of earnest purpose to combine every desirable feature a furnace should have and to make McClary's "Sunshine" the standard by which all other furnaces are judged.

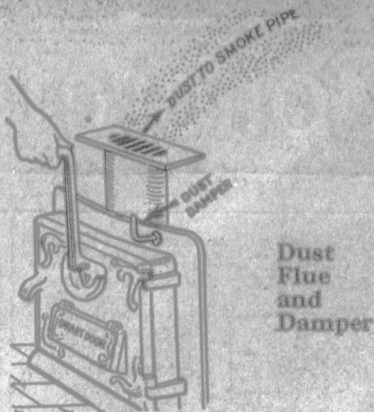
Let the "Sunshine" be your choice. Ask your dealer—or write our nearest office for free copy of our booklet, "Comfort in the Home." Estimates for heating and plans for installing furnished free of charge.



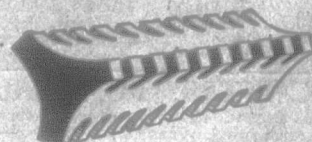
Filling Water Pan



Big Double Feed Doors



Dust Flue and Damper



Three-sided Grate Bars

McClary's

Largest Makers of Furnaces and Stoves in the Entire British Empire

LONDON ST. JOHN, N.B. TORONTO HAMILTON MONTREAL
SASKATOON VANCOUVER EDMONTON
CALGARY WINNIPEG