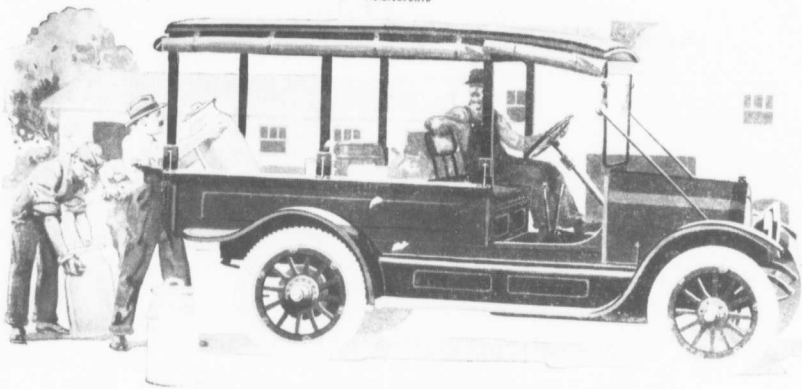


Overland
TRADE MARK REG.

1200 Lb.
Delivery Wagon
\$1190
C.O.B. Toronto



Extra—Three
Passenger Seats
\$21 Per Pair

Rugged, Hardy Work Wagons

These Overlands are as keen for the work of farm hauling as for the constant hard usage in commercial delivery work.

The Overland 1200 pound Delivery Wagon is built on the reliable time tested 35 horsepower chassis that made Overland famous the world over.

It is electrically equipped for lighting and starting and has every convenience.

The body is big and has capacity for larger bulk freight as well as 1200 pounds of weight.

It is a comfortable easy riding car as well and may be had with two extra three-passenger removable seats for twenty-one dollars additional if desired. With these extra seats

you have a comfortable eight passenger car. It is a great money maker and time saver on any farm.

At the price \$1190 it is exceptional value for it shares proportionately in the economies of our vast production of the most comprehensive line of motor cars ever built by any one producer.

The smaller cars either panel or express type are exceptional values and equally sturdy and reliable for lighter farm hauling.

See the nearest Willys-Overland dealer at once and have him show you these wagons and the beautiful new line of passenger cars.

Catalogue on request. Please address D. partment 1216

Price 1, 0, 0, Toronto and subject to change without notice.

Willys-Overland, Limited

Head Office and Works, West Toronto, Canada

Manufacturers of Willys-Knight and Overland Motor Cars and Light Delivery Wagons

Overland
Delivery Wagon
Panel Type
\$1025
C.O.B. Toronto



Overland
Delivery Wagon
Express Type
\$985
C.O.B. Toronto

