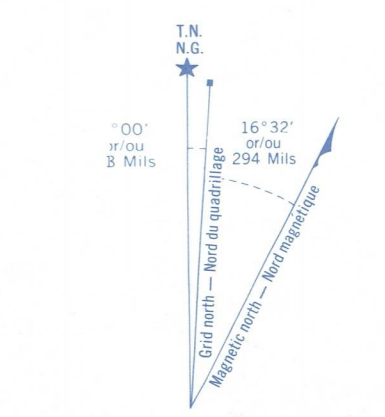
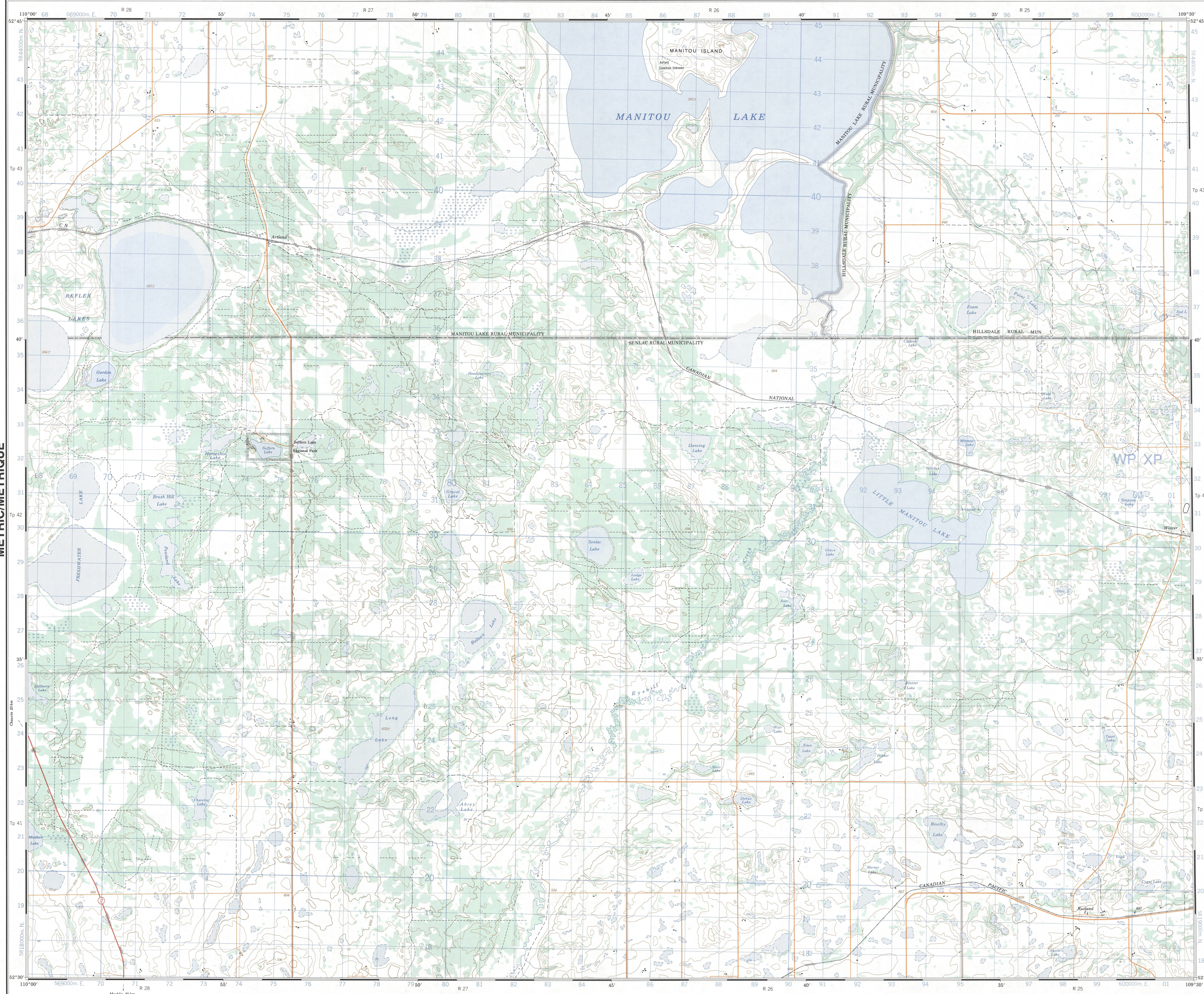


Military users, refer to this map as:
Référence de cette carte pour usage militaire:
SERIES A 742 SÉRIE
MAP 73 C12 CARTE
EDITION 3 MCE EDITION



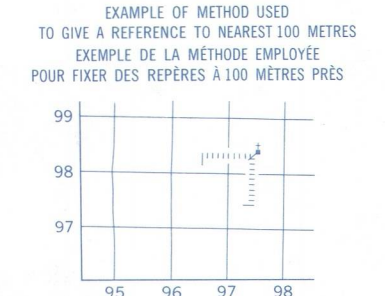
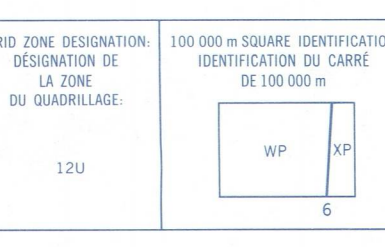
METRIC/MÉTRIQUE

METRIC/MÉTRIQUE



Use diagram only to obtain numerical values...
Utilisez le diagramme pour obtenir les valeurs numériques...

ONE THOUSAND METRE
UNIVERSAL TRANSVERSE MERCATOR GRID
ZONE 12
QUADRILLAGE UNIVERSEL TRANSVERSE DE MERCATOR
DE MILLE METRES



EXAMPLE OF METHOD USED TO OBTAIN A REFERENCE TO NEAREST 100 METRES
EXEMPLE DE LA MÉTHODE EMPLOYÉE POUR OBTENIR UNE RÉFÉRENCE À 100 MÈTRES

Table of grid zone designations and coordinates for the map area.

Produced by the Surveys and Mapping Branch, Department of Energy, Mines and Resources...
Copies may be obtained from the Canada Map Office, Department of Energy, Mines and Resources, Ottawa...

EYEHILL CREEK
SASKATCHEWAN
WEST OF THIRD MERIDIAN OUEST DU TROISIÈME MÉRIDIEN
Scale 1:50 000 Echelle

CONVERSION SCALE FOR ELEVATIONS
Mètres 0 50 100 200 300 400 500 600 700 800 900 1000
Feet 100 50 0 100 200 300 400 500 600 700 800 900 1000

Échelle de conversion des altitudes
Mètres 0 50 100 200 300 400 500 600 700 800 900 1000
Pieds 100 50 0 100 200 300 400 500 600 700 800 900 1000

ETABLIE PAR LA DIRECTION DES LEVÉS ET DE LA CARTOGRAPHIE...
Energy, Mines and Resources Canada