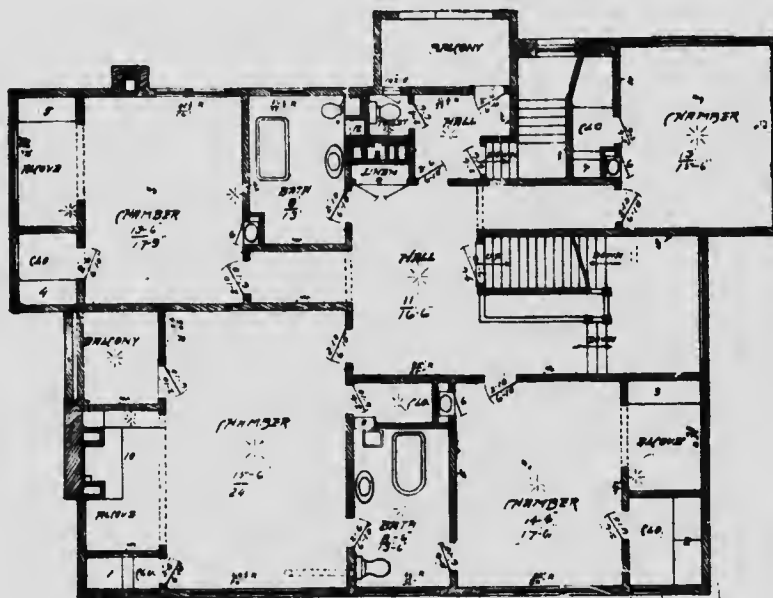


has been beautified by planting a magnificent selection of ornamental shrubs and trees and laying out flower beds and borders, such as provide for a beautiful showing of bulbs or bedding plants, in which over 360 varieties of roses have been planted. To the east of the house a full size tennis court has been laid out and a rustic summer house is located at a favorable viewpoint. Throughout the entire grounds winding paths have been laid out, affording access to every part.

To those acquainted with "Killarney," its magnificence, its comfort, its convenience, it seems only appropriate that for it should be borrowed the name of that Lake of Old Erin which everywhere typifies a high standard of beauty and charm.



Floor Plan, Second Floor