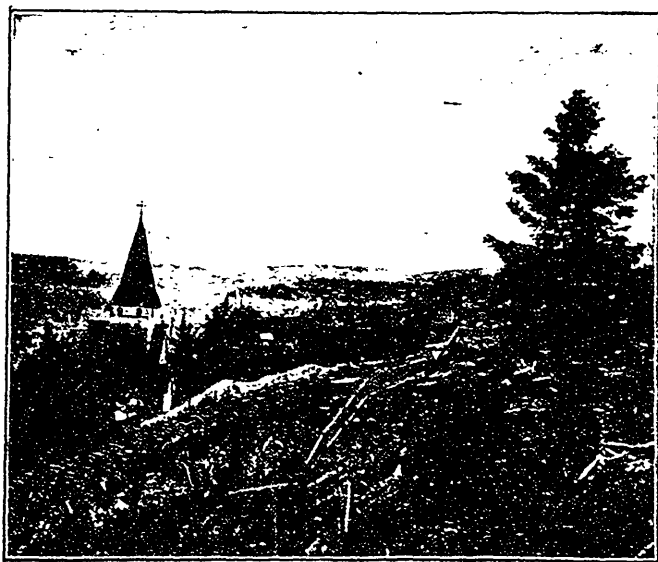


EPWORTH, NEWFOUNDLAND.

on the shore, the men they carts 'em to the fields an' spreads on the medders an' the oats, an' yez can just see 'em growin'. But the smell, it do be

terrible; but us gits used to it, an' don't mind it, for it brings lashin's o' hay an' oats.

"Yes, sure; the byes will take yez



BAY OF ISLANDS, NEWFOUNDLAND.