

when it encounters specialized data. Netscape displays the Warning dialog box, as shown in Figure 2-14, and asks if you want to open the file for use or save it to disk. If you choose to open the file, Navigator downloads it and launches the appropriate application. When the application closes, the file is lost unless you save it from within the application.

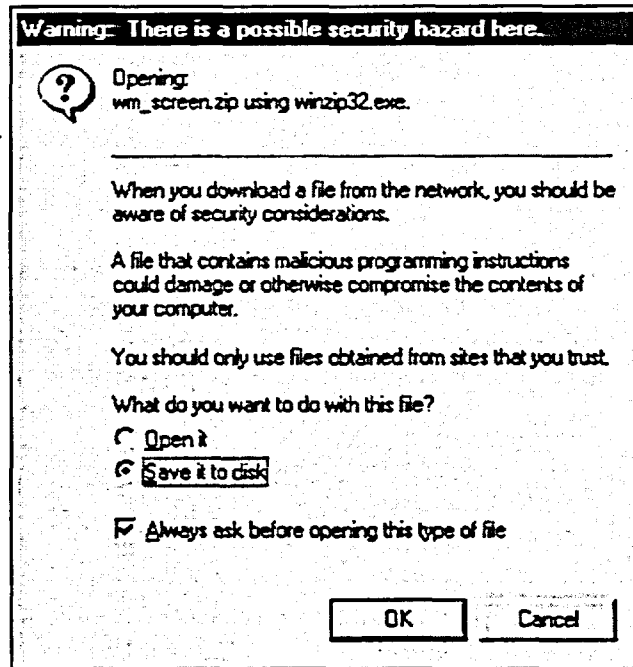


Figure 2-14: *The Warning Dialog Box*

- The download file has an extension that Navigator does not recognize. Navigator displays the Unknown File Type dialog box, shown in Figure 2-15. You can specify the application to use with the file, or just choose to have it saved to disk.

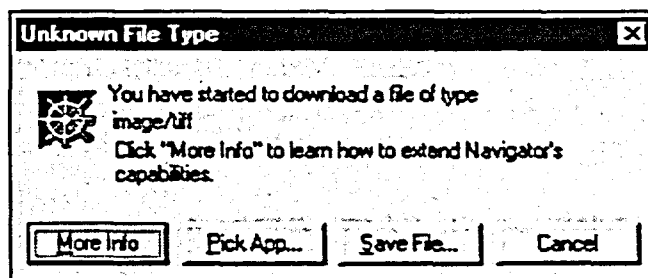


Figure 2-15: *The Unknown File Type Dialog Box*