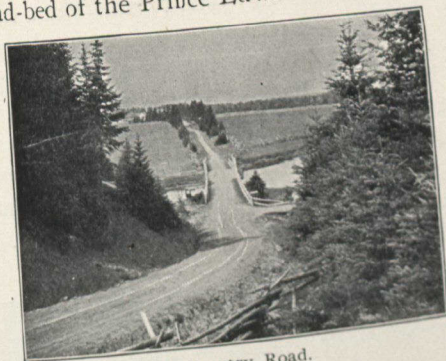


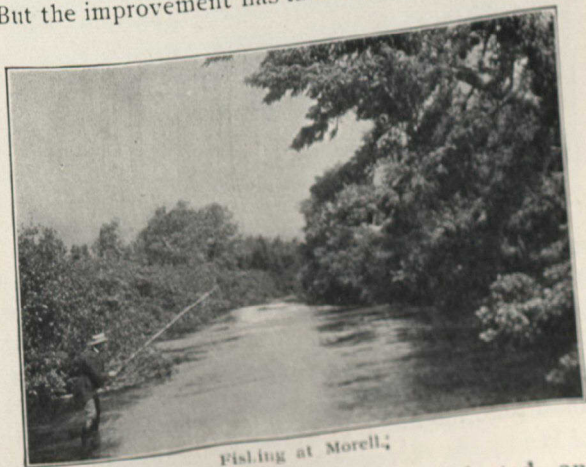
have not the pleasantest recollections of the train service and the road-bed of the Prince Edward Island Railway. It



A Country Road.

is true that the conditions of ten years ago were susceptible of improvement.

But the improvement has taken place, and old methods,



Fishing at Morell.

old cars, and other defects have been eliminated, and new comforts and conveniences have taken their place, with a thoroughness that has made the service of to-day im-