

THE "SHANNON" AND THE "CHESAPEAKE."

O shout for the good ship Shannon, And cheer for the gallant Brooke, For hot was the fight she fought, And staunch the ship he took.

at last confessed, with a good sense that reflects honor on their understandings as well as their hearts, that it was possible to prevent but never to dissolve an attachment; and that marriage was the honorable, and, indeed, the only alternative that could secure her happiness and life.

What's this dull town to me? Robin's not near; He whom I wish to see, Wish for to bear.

Immediately after his marriage with Lady Caroline, Adair was appointed Inspector-General of Military Hospitals and subsequently, becoming a favourite of George III., he was made surgeon-general, king's sergeants' surgeon and surgeon of Chelsea Hospital.

AS OTHERS SEE US.

The Hon. Joseph O'Neil writes thus to the St. Louis Republic: In my late visit to the East I stayed some time, both going and returning, in Montreal—a city remarkable for its fine public structures, including its bridge over the St. Lawrence, of 2 1/2 miles in length and costing \$7,000,000, its noble church edifices that are so remarkably well attended, even in early morn, with its mountain scenery on the one side and the grand old St. Lawrence on the other.

have a faint idea of the grandeur of this edifice. Take away the double side-galleries, let the side altars be in keeping with the main one, elevate the windows about three feet, so as to give the beautifully-carved confessionals at each side their proper height, put suitable stained glass in the windows, and what an edifice it would be!

OUR CHESS COLUMN.

Solutions to Problems sent in by Correspondents will be duly acknowledged. TO CORRESPONDENTS. J. W. S., Ottawa.—Post Card received. Thanks.

THE CANADIAN CHESS ASSOCIATION

We have been informed by a kind correspondent that there was a fair attendance of chessplayers at the annual meeting at Ottawa, on Tuesday, the 23rd ult. The annual Tourney commenced on Wednesday, the 24th, the following gentlemen having entered their names as competitors: Messrs. Phillips, Hurlbut, White, Lambert, Boncherville, Holt, Pope, Henderson and Shaw.

With reference to the "Move, or no move" question, which is occupying the attention of a large number of our chess layers at the present time, it may be interesting to state that the Editor of the Chess Column of the Illustrated London News gives the following answer to a Montreal correspondent, who wrote to him for his opinion in the matter:

The match between Messrs. Mason and Potter is finished at last. Mr. Potter won the twenty-first and last game, and the score then stood: Mason, 5; Potter, 5; Drawn, 11.

Mr. Steinitz in his notes to the "immortal game" played by Anderssen and Kieseritzky is of opinion that the latter on his twentieth move should have drawn the game. M. Tchigorine, however, publishes in La Strategie for June an analysis which seems to show that Mr. Steinitz is wrong.

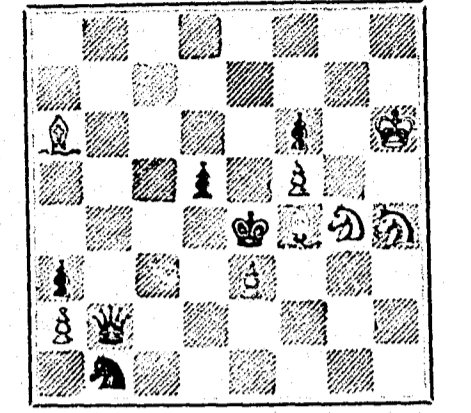
We regret to learn that the meeting of the British Amateur Chess Association, which was to have been held at Oxford, has had to be given up on account of the paucity of the entries.—Argus and Express.

A match for a stake of a thousand dollars has been arranged between Captain McKenzie, of New York, the champion of America, and Mr. Hoerner, of Chicago. The players have met before in the chess arena, at Cleveland in 1871 and at Chicago in 1874, the result of their individual contests being game for game, although the champion made much higher tourney scores on both occasions.—Illustrated London News.

ished games left out for arbitration, and the manager of the British team has been notified to that effect.—Lancet-Times.

A tournament is in progress in the Auburn, N.Y. Chess Club.

PROBLEM No. 244. (From Chess Gems.) By W. T. FURCK. BLACK.



White to play and mate in two moves.

GAME 289th. (From Land and Water.) CHESS IN LONDON. Twentieth game between Messrs. Mason and Potter.

(Irregular Opening)

- WHITE.—(Mr. Potter) 1. P to K 3 2. P to Q 4 3. Kt to Q R 3 4. P to Q R 3 5. P to Q 4 6. P takes P 7. B to K 3 8. B takes P 9. P to R 3 10. Kt to B 3 11. Castles 12. R to K sq (b) 13. B to K B sq (c) 14. P to K Kt 4 (d) 15. Kt to K R 4 16. B to Kt 2 (f) 17. Q to Q 2 18. Kt takes Kt 19. B takes Kt 20. B to B 4 21. Kt to Kt 2 (g) 22. K takes B 23. B takes B 24. P to B 3 25. R takes R 26. Q to K 3

- BLACK.—(Mr. Mason) 1. P to K 4 2. Kt to K B 3 3. Kt to B 3 4. P to Q R 3 5. P takes P 6. P to Q 4 7. P takes P 8. B to Q 3 (a) 9. Castles 10. B to K B 4 11. Q to Q 2 12. QR to K sq 13. P to R 3 14. B to Kt 3 (e) 15. Kt to K 2 16. P to B 3 17. Q Kt to Q 4 18. Kt takes Kt 19. P takes B 20. B to K 5 21. B takes Kt 22. R to K 5 23. Q takes B 24. R takes R 25. P to B 4

NOTES. (a) The opening has developed into the Queen's Gambit Accepted. We remember Rosenthal—no mean authority as an analyst—expressing to us his opinion that it was much better to accept than to decline the Queen's Gambit. Older authorities thought differently, and there is, no doubt, much to be said on both sides. We are rather inclined to think that White obtains a slight advantage when the above mentioned gambit is accepted.

SOLUTIONS. Solution of Problem No. 42. WHITE. 1. P to Q 3 2. R to Q B 2 3. Kt mates

A CARD. To all who are suffering from the errors and indiscretions of youth, nervous weakness, early decay, loss of manhood, &c., I will send a recipe that will cure you, FREE OF CHARGE. This great remedy was discovered by a missionary in South America. Send a self-addressed envelope to the REV. JOSEPH T. INMAN, Station D, New York City.